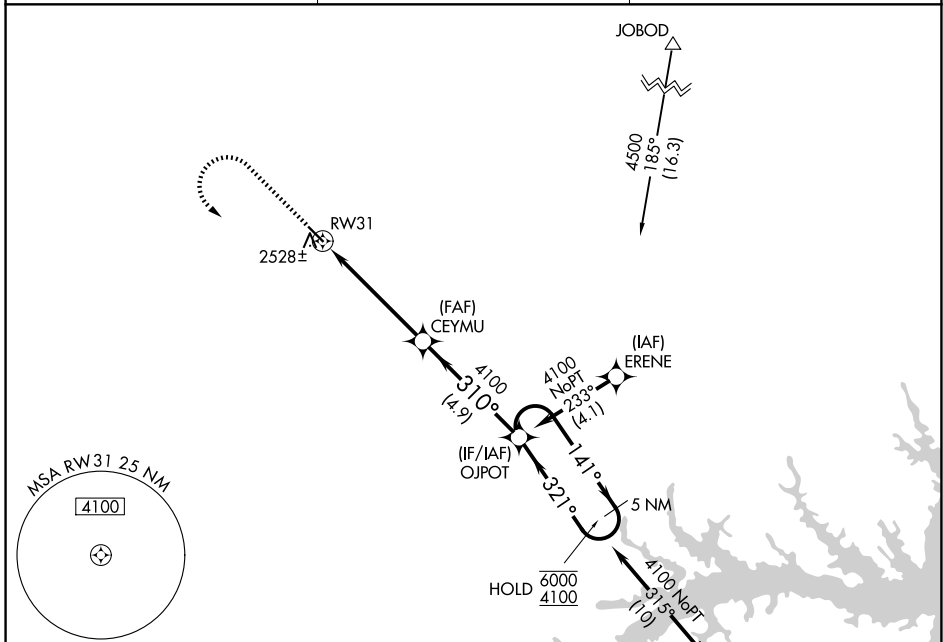


WAAS CH 69647 W31A	APP CRS 310°	Rwy Ldg TDZE Apt Elev	4200 2449 2449
--	------------------------	-----------------------------	---

RNAV (GPS) RWY 31

CHEYENNE EAGLE BUTTE (84D)

RNP APCH - GPS.		MISSED APPROACH: Climb to 4100 then turn left direct OJPOT and hold.
▼ Baro-VNAV NA ▲ NA Use PIR altimeter setting; when not received, procedure NA.		
PIR ASOS 119.025	MINNEAPOLIS CENTER 135.25 256.7	UNICOM 122.8 (CTAF) 0

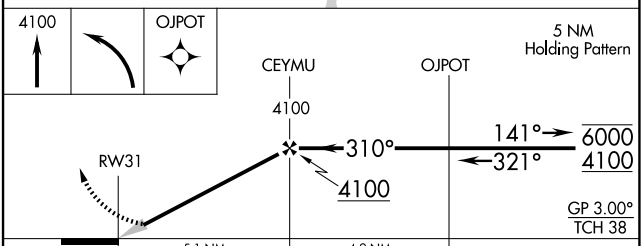
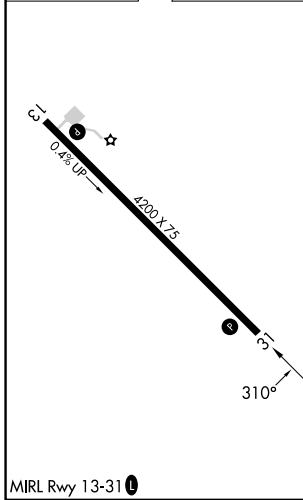


NC-1, 14 MAY 2026 to 11 JUN 2026

NC-1, 14 MAY 2026 to 11 JUN 2026

ELEV 2449	TDZE 2449
------------------	------------------

Procedure NA for arrivals at TUZCO on V120 southeast bound.



CATEGORY	A	B	C	D
LPV DA	2928-1 $\frac{3}{8}$	479 (500-1 $\frac{3}{8}$)		NA
LNAV/VNAV DA	2928-1 $\frac{3}{8}$	479 (500-1 $\frac{3}{8}$)		NA
LNAV MDA	3020-1	571 (600-1)		NA
CIRCLING	3240-1	791 (800-1)		NA