

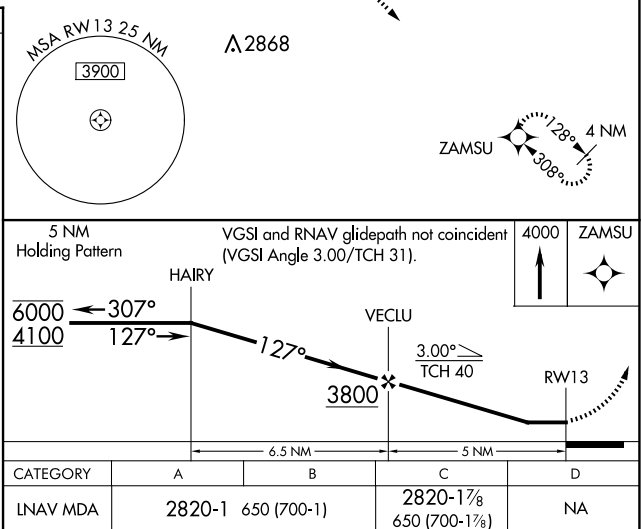
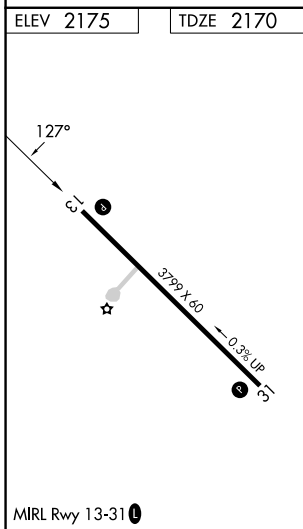
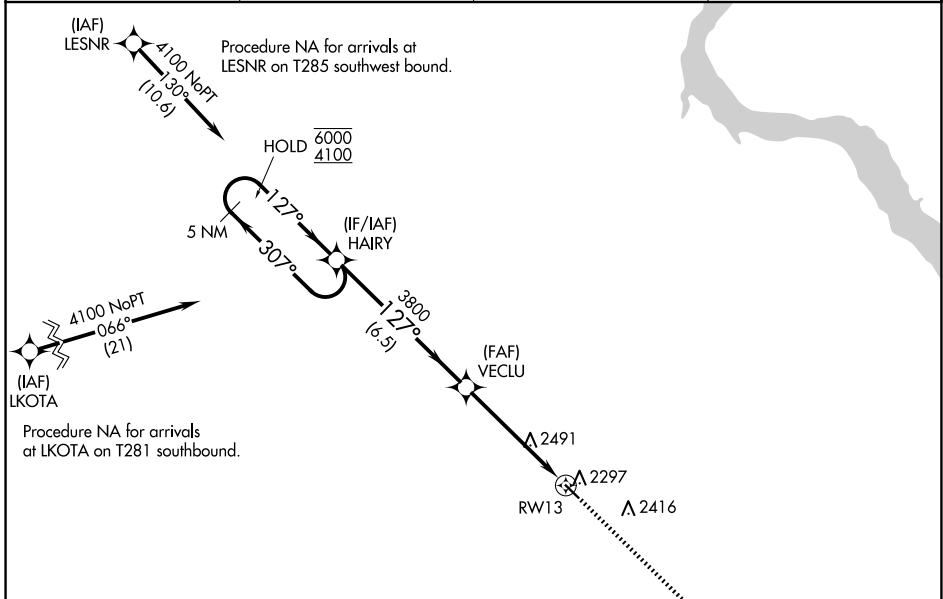
APP CRS	Rwy Idg	<b>3799</b>
<b>127°</b>	TDZE	<b>2170</b>
	Apt Elev	<b>2175</b>

# RNAV (GPS) RWY 13

GREGORY MUNI/FLYNN FLD (9D1)

RNP APCH.	<p><b>▽</b> Rwy 13 helicopter visibility reduction below ¼ SM NA. Use Winner altimeter setting; when not received, use Ainsworth altimeter setting and increase all MDA 100 feet; increase LNAV Cat B visibility ¼ SM and Cat C visibility ½ SM.</p>	MISSED APPROACH: Climb to 4000 direct ZAMSU and hold.
-----------	--	---

ICR ASOS <b>126.775</b>	MINNEAPOLIS CENTER <b>125.1 269.1</b>	GCO <b>121.725</b>	AUNICOM <b>122.8 (CTAF) 0</b>
----------------------------	--	-----------------------	----------------------------------



NC-1, 14 MAY 2026 to 11 JUN 2026

NC-1, 14 MAY 2026 to 11 JUN 2026