

WAAS CH <b>87041</b> <b>W35A</b>	APP CRS <b>352°</b>	Rwy Idg TDZE Apt Elev	<b>5399</b> <b>3653</b> <b>3677</b>
--	------------------------	-----------------------------	---

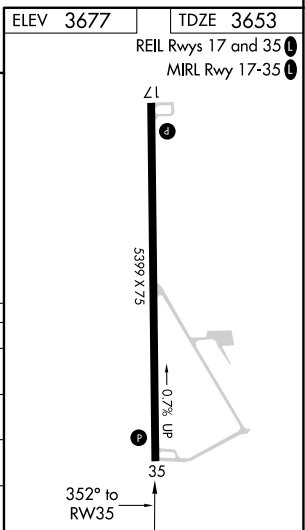
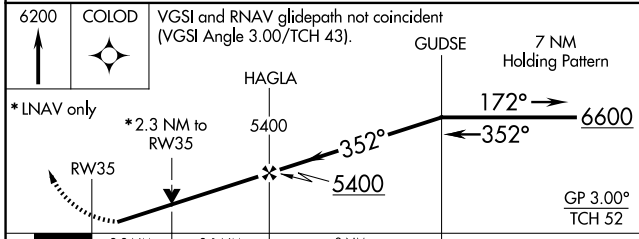
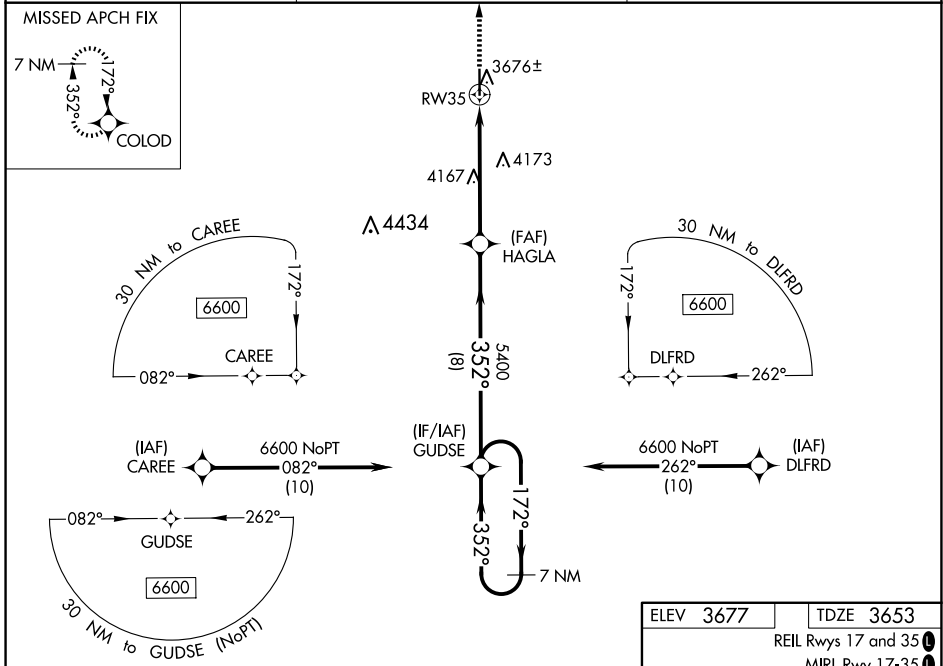
# RNAV (GPS) RWY 35

WRAY MUNI (2V5)

**⚠** For uncompensated Baro-VNAV systems, LNAV/VNAV NA below -22°C (-7°F) or above 53°C (127°F). Baro-VNAV and VDP NA when using Imperial altimeter setting. Rwy 35 helicopter visibility reduction below 3/4 SM NA. DME/DME RNP-0.3 NA. When local altimeter setting is not received use Imperial altimeter setting: increase LPV DA to 4047 and visibility to 1 1/4 SM and LNAV/VNAV DA to 4088 and visibility to 1 1/4 SM; increase all MDAs 140 feet and visibility Cats A, D 1/2 SM, Cat C 1/2 SM.

MISSED APPROACH: Climb to 6200 direct COLOD and hold.

AWOS-3 <b>118.25</b>	DENVER CENTER <b>132.7 226.675</b>	UNICOM <b>122.8 (CTAF) 0</b>
-------------------------	---------------------------------------	---------------------------------



CATEGORY	A	B	C	D
LPV DA		3903-1	250 (300-1)	
LNAV/VNAV DA		3945-1	292 (300-1)	
LNAV MDA	4420-1 767 (800-1)	4420-1 1/4 767 (800-1 1/4)	4420-2 1/2 767 (800-2 1/2)	4540-2 3/4 767 (800-2 3/4)
<b>C</b> CIRCLING	4420-1 743 (800-1)	4420-1 1/4 743 (800-1 1/4)	4540-2 1/2 863 (900-2 1/2)	4540-2 3/4 863 (900-2 3/4)

SW-1, 14 MAY 2026 to 11 JUN 2026

SW-1, 14 MAY 2026 to 11 JUN 2026