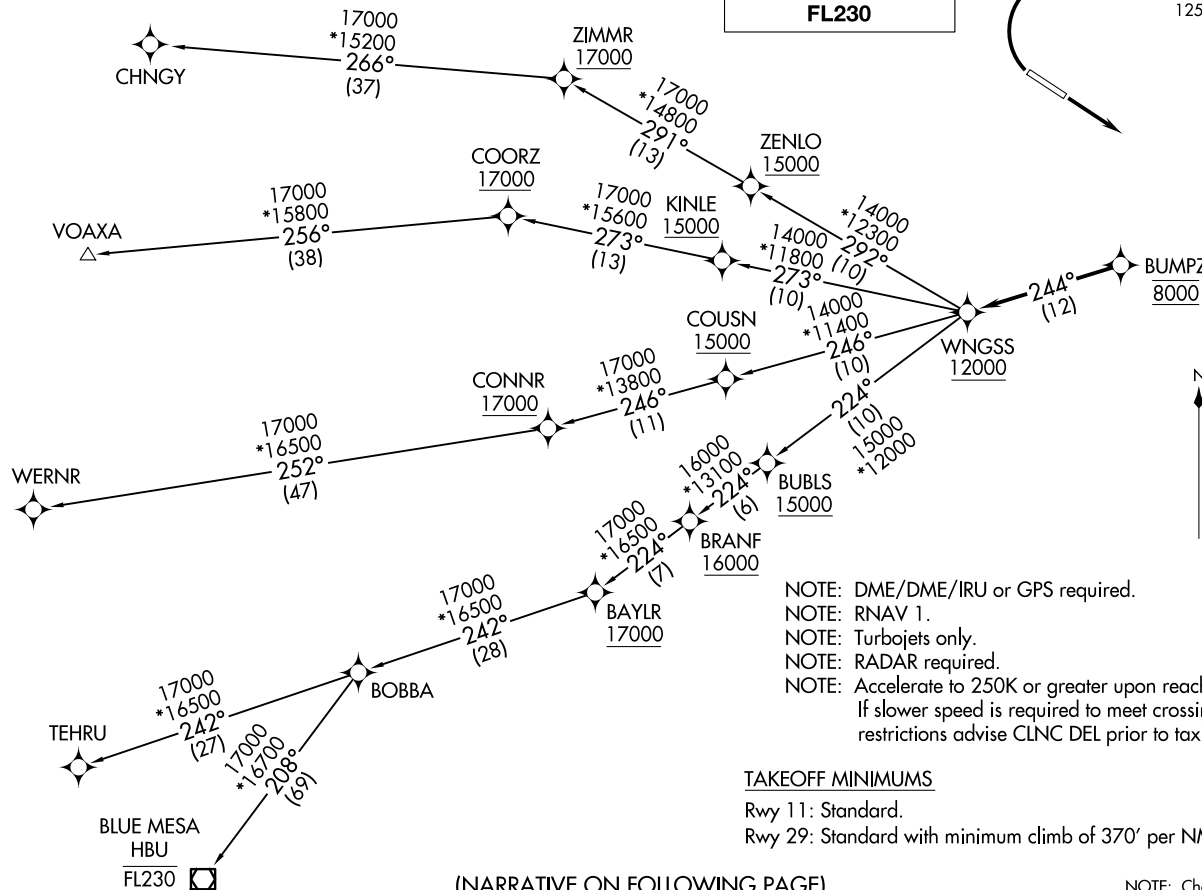
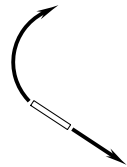


**TOP ALTITUDE:  
FL230**

DENVER DEP CON  
125.125 263.025



NOTE: DME/DME/IRU or GPS required.  
 NOTE: RNAV 1.  
 NOTE: Turbojets only.  
 NOTE: RADAR required.  
 NOTE: Accelerate to 250K or greater upon reaching 10000.  
 If slower speed is required to meet crossing restrictions advise CLNC DEL prior to taxi.

**TAKEOFF MINIMUMS**

Rwy 11: Standard.  
 Rwy 29: Standard with minimum climb of 370' per NM to 8000.

(NARRATIVE ON FOLLOWING PAGE)

NOTE: Chart not to scale.

WNGSS ONE DEPARTURE (RNAV)  
(WNGSS1, WNGSS) 26MAY20

LONGMONT, COLORADO  
VANCE BRAND (L,M,O)

(WNGSS1, WNGSS) 26022  
WNGSS ONE DEPARTURE (RNAV)

AL-9041 (FAA)

VANCE BRAND (L,M,O)  
LONGMONT, COLORADO



DEPARTURE ROUTE DESCRIPTION

TAKEOFF RUNWAY 11: Climb on a heading between 030° CW 160° as assigned by ATC. Thence. . . .

TAKEOFF RUNWAY 29: Climbing right turn on a heading between 030° CW 110° as assigned by ATC. Thence. . . .

. . . .expect RADAR vectors to cross BUMPZ at 8000 then on track 244° to cross WNGSS at or above 12000 then on (transition) maintain FL230 or filed lower altitude. Expect higher filed altitude ten minutes after departure.

BLUE MESA TRANSITION (WNGSS1.HBU)

CHNGY TRANSITION (WNGSS1.CHNGY)

TEHRU TRANSITION (WNGSS1.TEHRU)

VOAXA TRANSITION (WNGSS1.VOAXA)

WERNR TRANSITION (WNGSS1.WERNR)

SW-1, 14 MAY 2026 to 11 JUN 2026

SW-1, 14 MAY 2026 to 11 JUN 2026