

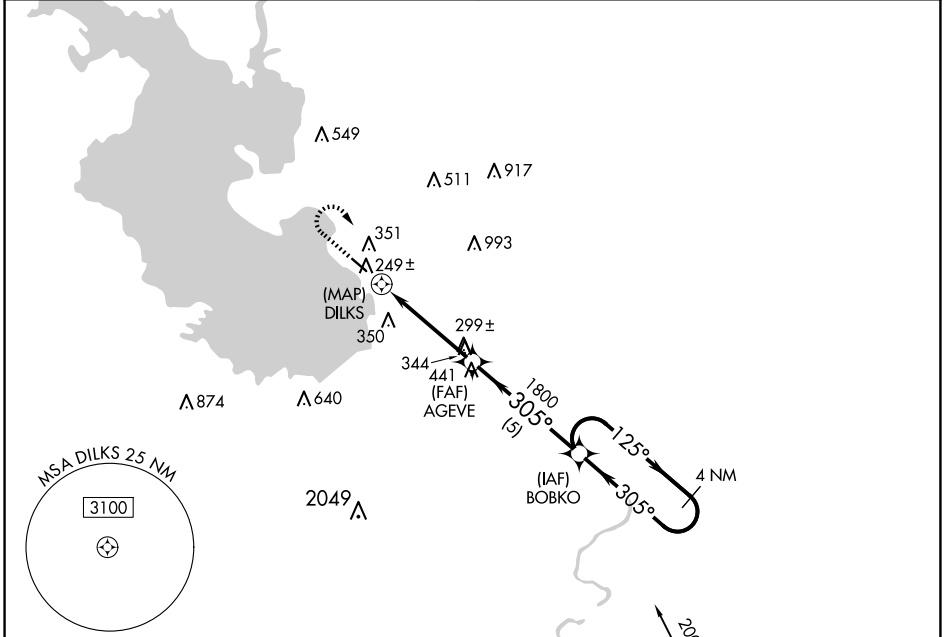
APP CRS <b>305°</b>	Rwy Idg TDZE Apt Elev	<b>3704</b> <b>151</b> <b>151</b>
------------------------	-----------------------------	---

# RNAV (GPS) RWY 30

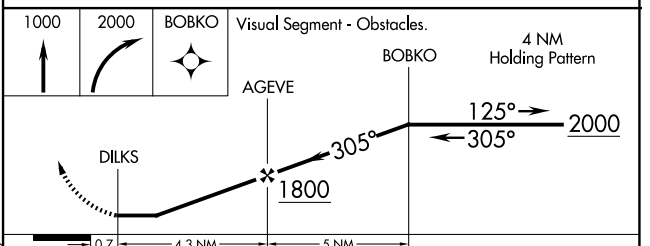
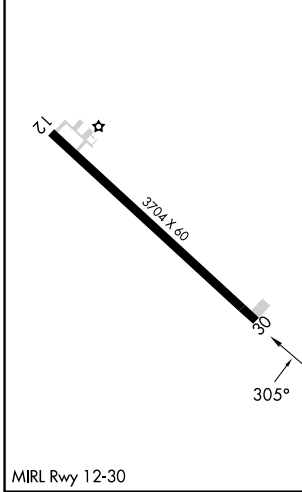
LIVINGSTON MUNI (00R)

RNP APCH-GPS.	MISSED APPROACH: Climb to 1000 then climbing right turn to 2000 direct BOBK0 WP and hold.
▼ Use Conroe/North Houston Rgnl altimeter setting. Rwy 30 helicopter ▲ NA visibility reduction below 1 SM NA. Night landing: Rwy 30 NA.	

HOUSTON CENTER <b>125.175 285.575</b>	UNICOM <b>122.7 (CTAF)</b>
--	-------------------------------



ELEV 151	TDZE 151
----------	----------



CATEGORY	A	B	C	D
LNAV MDA	680-1	529 (600-1)	680-1½ 529 (600-1½)	NA
CIRCLING	800-1	649 (700-1)	800-1¾ 649 (700-1¾)	NA

SC-5, 14 MAY 2026 to 11 JUN 2026

SC-5, 14 MAY 2026 to 11 JUN 2026