

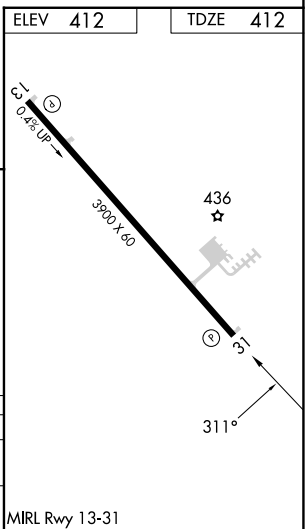
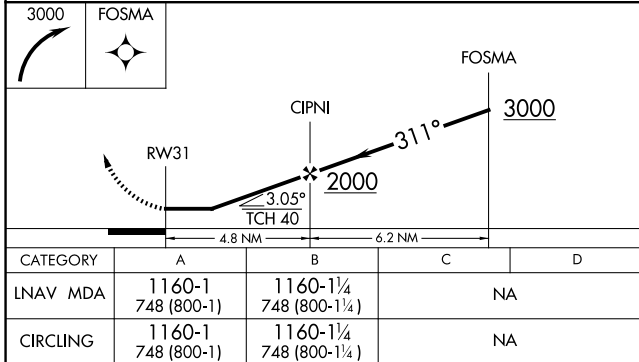
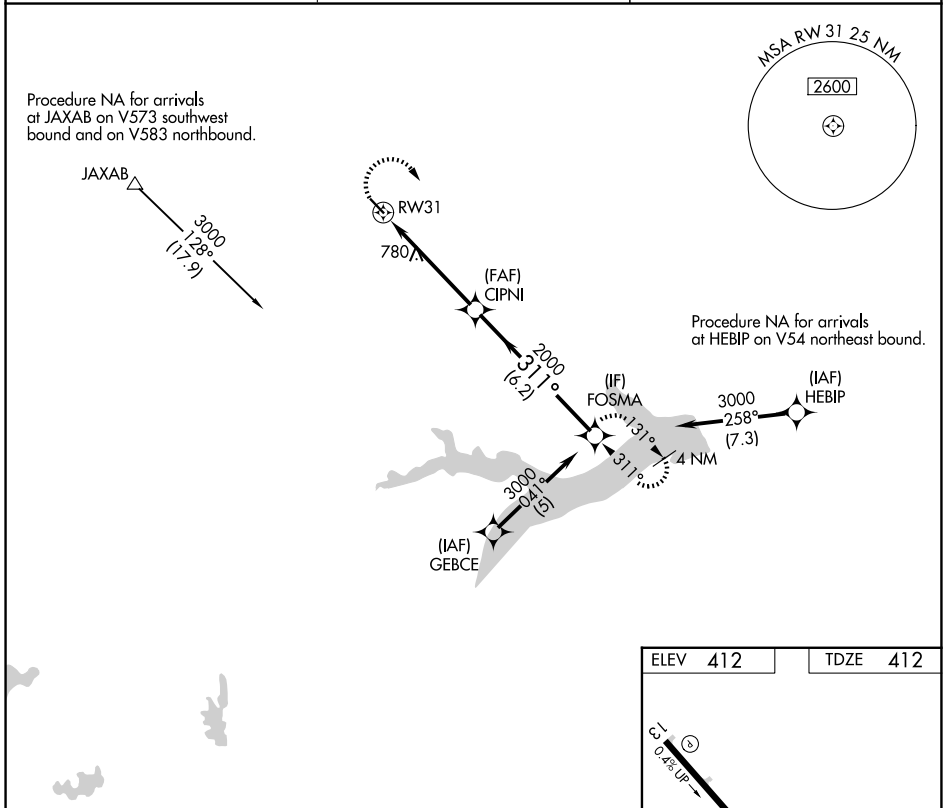
APP CRS 311°	Rwy Ldg 3900
	TDZE 412
	Apt Elev 412

RNAV (GPS) RWY 31

FRANKLIN COUNTY (F53)

RNP APCH.	<p>▼ Circling Rwy 13 NA at night. Rwy 31 helicopter visibility reduction below 3/4 SM NA. ▲ NA Use Mount Pleasant Rgnl altimeter setting; when not received, procedure NA.</p>	MISSED APPROACH: Climbing right turn to 3000 direct FOSMA and hold.
-----------	---	---

OSA AWOS-3 119.775	FORT WORTH CENTER 132.025 317.75	UNICOM 123.0 (CTAF)
------------------------------	--	-------------------------------



SC-2, 14 MAY 2026 to 11 JUN 2026

SC-2, 14 MAY 2026 to 11 JUN 2026