

LOC/DME I-GAO 109.1 Chan 28	APP CRS 359°	Rwy Ldg 6500 TDZE -2 Apt Elev 0
------------------------------------------	------------------------	------------------------------------------------------------

ILS or LOC RWY 36

SOUTH LAFOURCHE LEONARD MILLER JR (GAO)

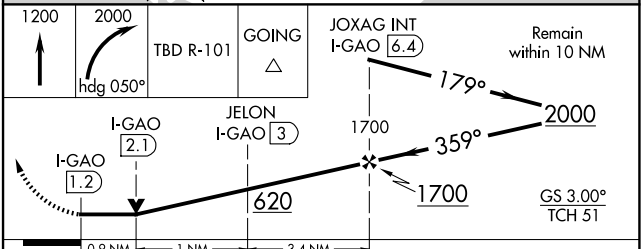
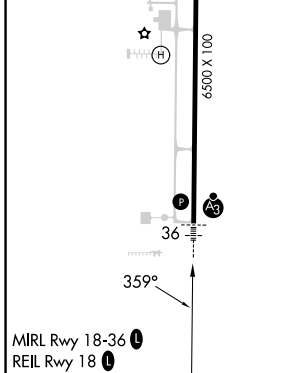
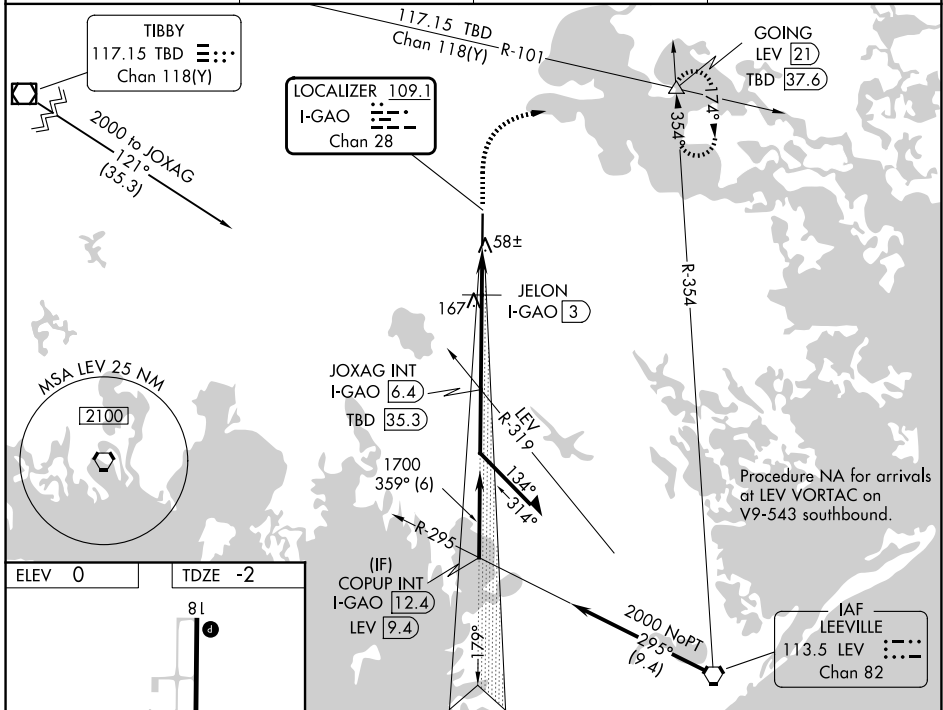
DME required.

Autopilot coupled approach NA below 210 feet.

SSALR

MISSED APPROACH: Climb to 2000 then climbing right turn to 2000 on heading 050° and TBD VOR/DME R-101 to GOING INT/LEV 21 DME and hold.

AWOS-3PT 118.175	NEW ORLEANS APP CON 120.85 256.9	CLNC DEL 120.85	UNICOM 123.0 (CTAF)
----------------------------	--------------------------------------------	---------------------------	-------------------------------



CATEGORY	A	B	C	D
S-ILS 36		198-1/2	200 (200-1/2)	
S-LOC 36		320-1/2	322 (400-1/2)	
CIRCLING	440-1 440 (500-1)	560-1 560 (600-1)	640-1 3/4 640 (700-1 3/4)	640-2 640 (700-2)

SC-4, 14 MAY 2026 to 11 JUN 2026

SC-4, 14 MAY 2026 to 11 JUN 2026