

NESS CITY, KANSAS

AL-9052 (FAA)

25163

WAAS CH 77944 W17A	APP CRS 172°	Rwy Ldg TDZE Apt Elev	4000 2322 2322
--	------------------------	-----------------------------	---

RNAV (GPS) RWY 17

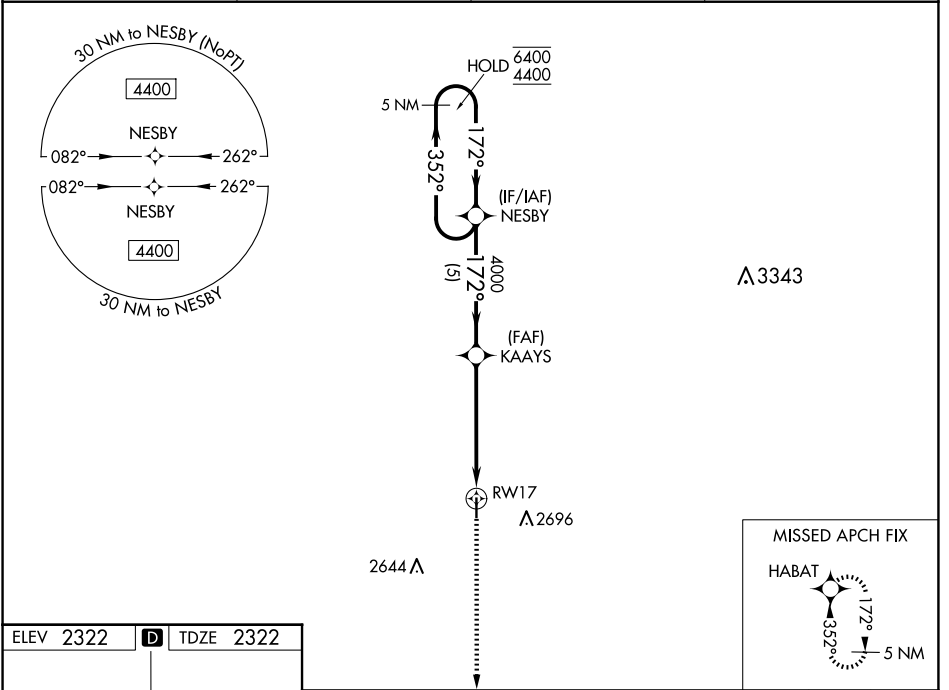
NESS CITY MUNI (48K)

RNP APCH - GPS.

▼ Baro-VNAV NA. Use Hays Rgnl altimeter setting, when not received, use Hill City altimeter setting and increase LPV DA to 2659 feet, increase LNAV/VNAV DA to 2758 feet, and increase all MDAs 20 feet.

▲ NA MISSED APPROACH: Climb to 4400 direct HABAT and hold.

AWOS-3PT 118.575	HYS AWOS-3PT 125.525	KANSAS CITY CENTER 124.4 322.4	CTAF 122.9
----------------------------	--------------------------------	--	----------------------



NC-2, 14 MAY 2026 to 11 JUN 2026

NC-2, 14 MAY 2026 to 11 JUN 2026

ELEV 2322	D	TDZE 2322
-----------	----------	-----------

172°

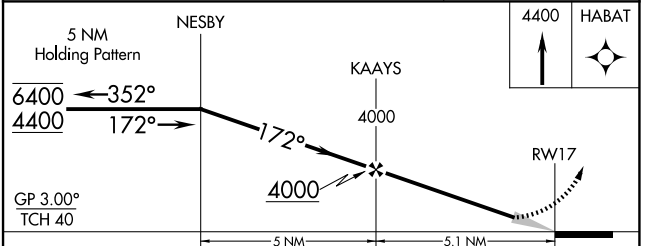
41

4000 X 60 ± 0.9% UP

35

MIRL Rwy 17-35

REIL Rwys 17 and 35



CATEGORY	A	B	C	D
LPV DA	2653-1	331 (400-1)		NA
LNAV/VNAV DA	2752-1¼	430 (500-1¼)		NA
LNAV MDA	3080-1 758 (800-1)	3080-1¼ 758 (800-1¼)		NA
CIRCLING	3080-1 758 (800-1)	3140-1¼ 818 (900-1¼)		NA

NESS CITY, KANSAS
Orig 20APR23

38°28'N-99°55'W

RNAV (GPS) RWY 17

NESS CITY MUNI (48K)