

WAAS CH <b>99541</b> <b>W07A</b>	APP CRS <b>067°</b>	Rwy Ldg TDZE Apt Elev	<b>6409</b> <b>5249</b> <b>5278</b>
--	------------------------	-----------------------------	---

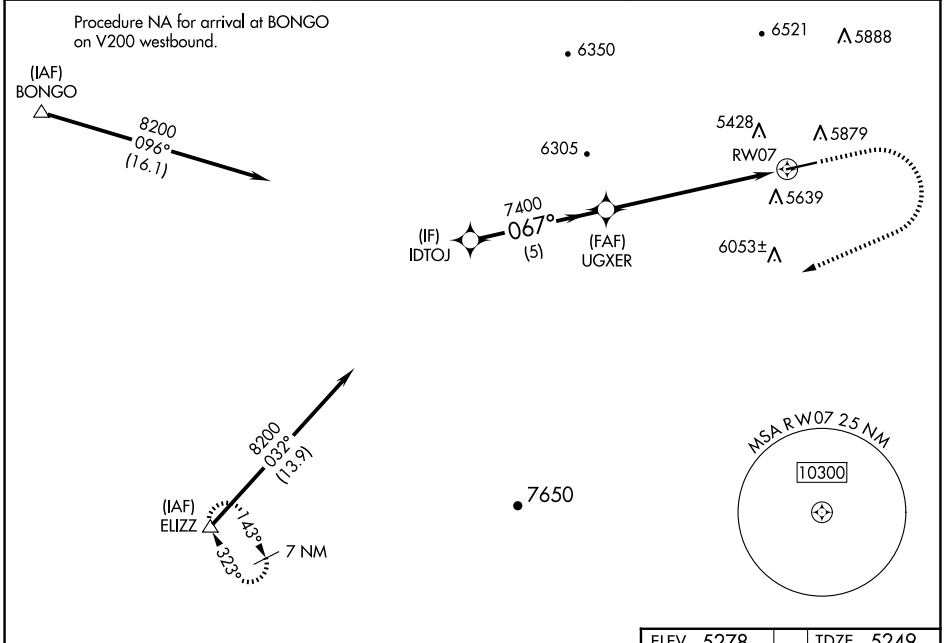
# RNAV (GPS) RWY 7

RANGELY (4VØ)

**⚠** For uncompensated Baro-VNAV systems, LNAV/VNAV NA below -28°C (-18°F) or above 54°C (130°F). Circling Rwy 25 NA at night. DME/DME RNP-0.3 NA.

**MISSED APPROACH:** Climb to 5700 then climbing right turn to 10800 direct ELIZZ and hold.  
# Missed approach requires a minimum climb of 425 feet per NM to 8200 feet.

AWOS-3PT <b>119.025</b>	DENVER CENTER <b>134.5 327.8</b>	UNICOM <b>122.8 (CTAF)</b> <b>📻</b>
----------------------------	-------------------------------------	--



SW-1, 14 MAY 2026 to 11 JUN 2026

SW-1, 14 MAY 2026 to 11 JUN 2026

		ELEV 5278	TDZE 5249
IDTOJ		5700	ELIZZ
UGXER		10800	△
RW07		* LNAV only.	
GP 3.00° TCH 40		067°	
5 NM		0.6% UP	
0.8 NM		6409 X 75	
5.9 NM		25	
CATEGORY	A	B	D
LPV DA#	5599-1 350 (400-1)		NA
LPV DA	6013-2½ 764 (800-2½)		NA
LNAV/VNAV DA	6041-2½ 792 (800-2½)		NA
LNAV MDA	7180-1¼ 1931 (2000-1¼)	7180-1½ 1931 (2000-1½)	7180-3 1931 (2000-3)
<b>C</b> CIRCLING	7180-1¼ 1902 (2000-1¼)	7180-1½ 1902 (2000-1½)	7180-3 1902 (2000-3)
		MIRL Rwy 7-25 <b>📻</b>	REIL Rwy 7 and 25 <b>📻</b>