

APP CRS 239°	Rwy Ldg 5101
	TDZE 3313
	Apt Elev 3313

RNAV (GPS) RWY 26

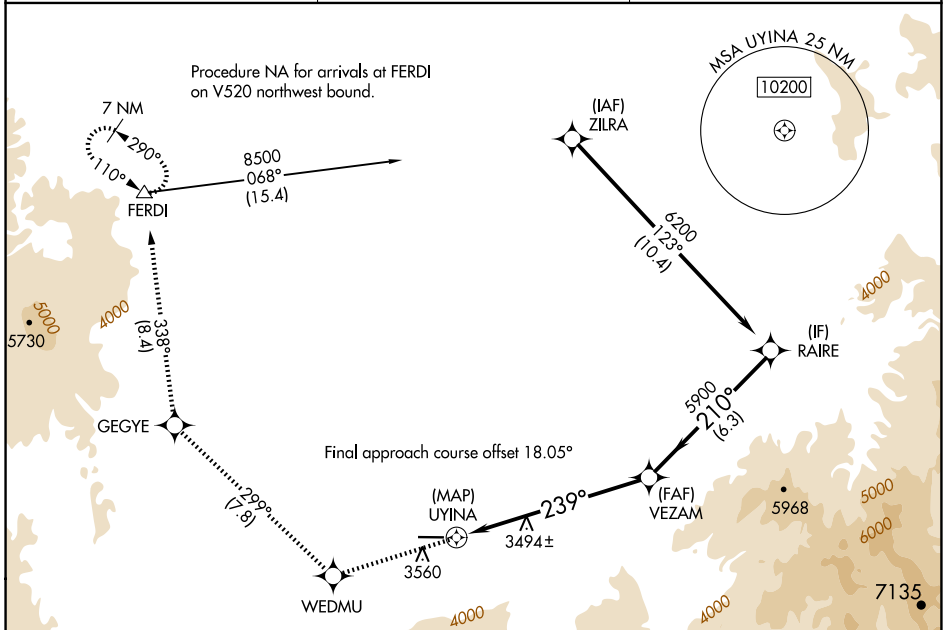
IDAHO COUNTY (GIC)

RNP APCH - GPS.

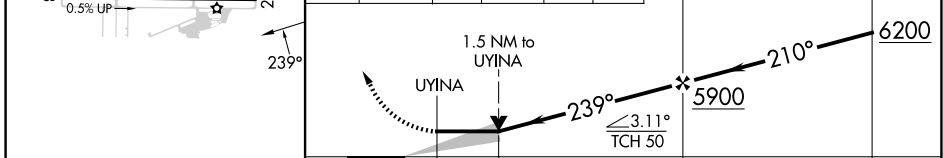
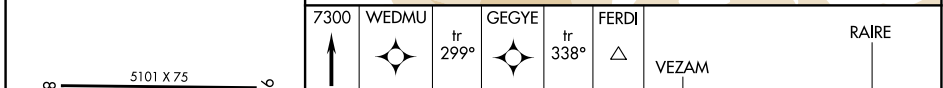
⚠ Circling NA south of Rwy 8-26.

MISSED APPROACH: Climb to 7300 direct WEDMU and on track 299° to GEGYE and on track 338° to FERDI and hold, continue climb-in-hold to 7300.

AWOS-3 118.175	SEATTLE CENTER 123.95 290.55	CTAF 122.8
--------------------------	--	----------------------



ELEV 3313	TDZE 3313
-----------	-----------



CATEGORY	A	B	C	D
LNAV MDA	4000-1 687 (700-1)	4000-2 687 (700-2)	4000-2 687 (700-2)	4000-2 687 (700-2)
C CIRCLING	4000-1 687 (700-1)	4000-2 687 (700-2)	4000-2 687 (700-2)	4000-2 1/4 687 (700-2 1/4)

NW-1, 14 MAY 2026 to 11 JUN 2026

NW-1, 14 MAY 2026 to 11 JUN 2026