

APP CRS **076°**
 Rwy Ldg **5101**
 TDZE **3305**
 Apt Elev **3313**

RNAV (GPS) RWY 8

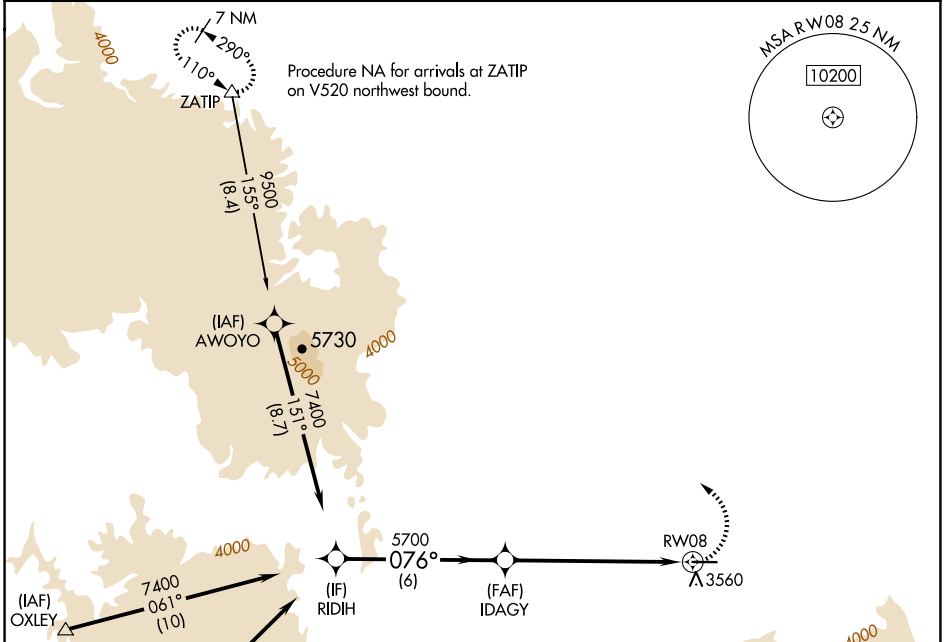
IDAHO COUNTY (GIC)

RNP APCH - GPS.

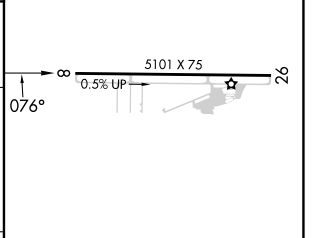
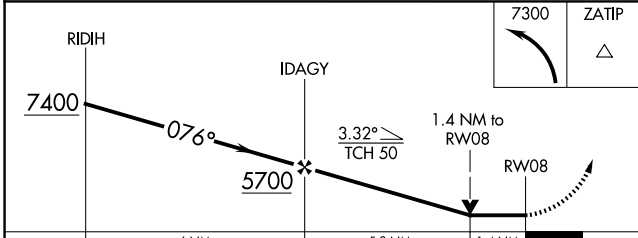
▼ Rwy 8 helicopter visibility reduction below ¼ SM NA.
▲ Circling NA south of Rwy 8-26.

MISSED APPROACH: Climbing left turn to 7300 direct ZATIP and hold.

AWOS-3 **118.175** SEATTLE CENTER **123.95 290.55** CTAF **122.8**



ELEV 3313 TDZE 3305



CATEGORY	A	B	C	D
LNVA MDA	3820-1	515 (600-1)	3820-1 3/8	515 (600-1 3/8)
C CIRCLING	3820-1	507 (600-1)	3820-1 1/2	3880-2
			507 (600-1 1/2)	567 (600-2)

REIL Rwy 8 **0**
 MIRL Rwy 8-26 **0**

NW-1, 14 MAY 2026 to 11 JUN 2026

NW-1, 14 MAY 2026 to 11 JUN 2026