

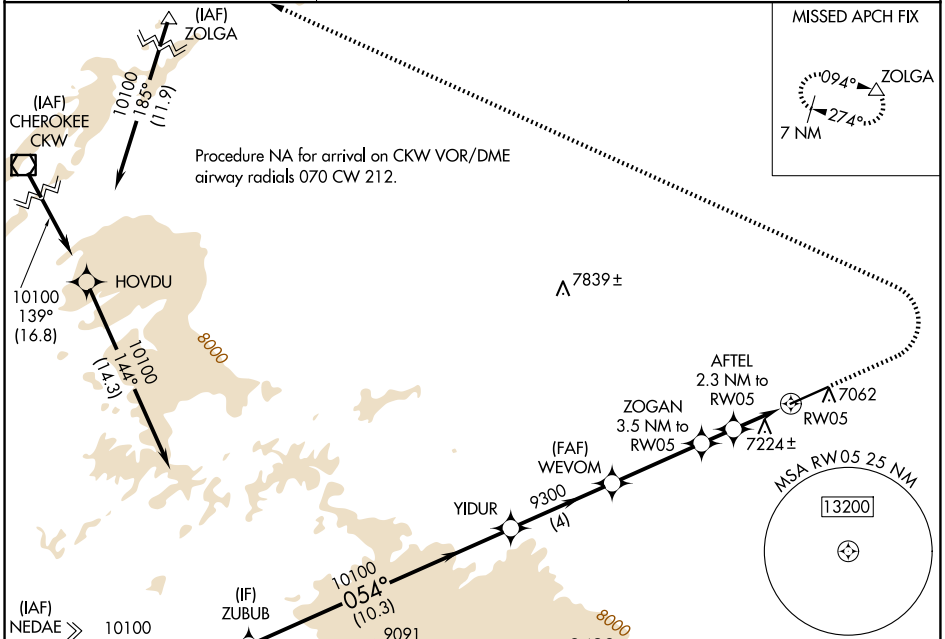
WAAS CH 65820 W05A	APP CRS 054°	Rwy Ldg TDZE Apt Elev	8801 7014 7014
--	------------------------	-----------------------------	---

RNAV (GPS) RWY 5

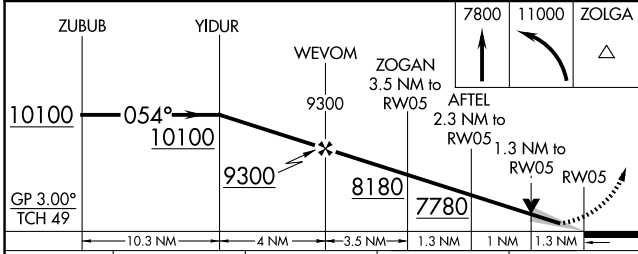
SHIVELY FLD (SAA)

RNP APCH - GPS.	MISSED APPROACH: Climb to 7800 then climbing left turn to 11000 direct ZOLGA and hold.
<p>▼ For uncompensated Baro-VNAV systems, LNAV/VNAV NA below -28°C or above 54°C.</p>	

AWOS-3PT 118.175	DENVER CENTER 132.1 254.35	UNICOM 122.8 (CTAF) 0
----------------------------	--------------------------------------	---------------------------------



ELEV 7014	TDZE 7014
-----------	-----------



CATEGORY	A	B	C	D
LPV DA	7264- ³ / ₄ 250 (300- ³ / ₄)			
LNAV/VNAV DA	7546-1 ¹ / ₂ 532 (600-1 ¹ / ₂)			
LNAV MDA	7480-1 466 (500-1)		7480-1 ³ / ₈ 466 (500-1 ³ / ₈)	
CIRCLING	7540-1 526 (600-1)		7740-2 726 (800-2)	7860-2 ³ / ₄ 846 (900-2 ³ / ₄)

REIL Rwy 5 and 23 0

MIRL Rwy 5-23 0

NW-1, 14 MAY 2026 to 11 JUN 2026

NW-1, 14 MAY 2026 to 11 JUN 2026