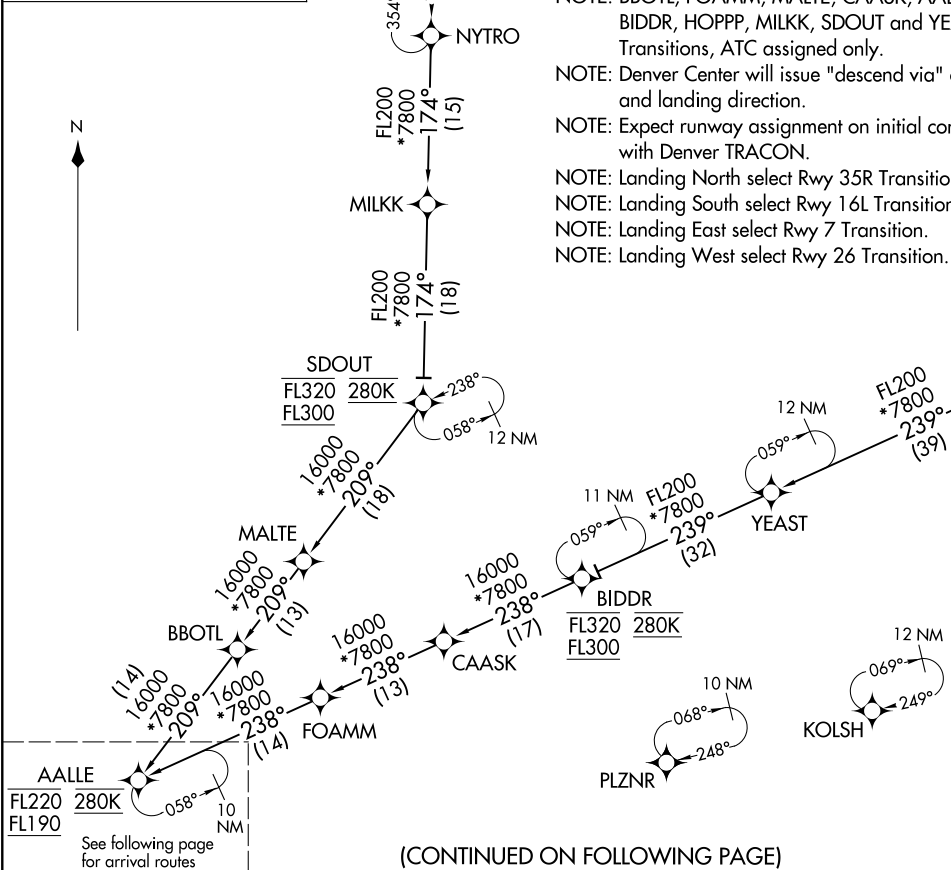


(A)AILE:A(ALL)E4 12JUN25

A(ALL)E FOUR ARRIVAL (RNAV) Transition Routes

DENVER, COLORADO
DENVER INTL (D)EN

RNAV 1 - DME/DME/IRU or GPS.
RADAR required.



NOTE: Jet aircraft only.
 NOTE: BBOTL, FOAMM, MALTE, CAASK, AALLE, BIDDR, HOPPP, MILKK, SDOUT and YEAST Transitions, ATC assigned only.
 NOTE: Denver Center will issue "descend via" clearance and landing direction.
 NOTE: Expect runway assignment on initial contact with Denver TRACON.
 NOTE: Landing North select Rwy 35R Transition.
 NOTE: Landing South select Rwy 16L Transition.
 NOTE: Landing East select Rwy 7 Transition.
 NOTE: Landing West select Rwy 26 Transition.

DENVER APP CON
 124.95 346.4
 D-ATIS ARR
 125.6 379.9
 DENVER TOWER
 128.75 273.55 (Rwy 7-25)
 132.35 239.275 (Rwys 8-26, 17L-35R)
 124.3 322.45 (Rwy 17R-35L)
 135.3 351.95 (Rwys 16L-34R, 16R-34L)

NOTE: Chart not to scale.

- BBOTL TRANSITION (BBOTL.AALLE4)
- BIDDR TRANSITION (BIDDR.AALLE4)
- CAASK TRANSITION (CAASK.AALLE4)
- FOAMM TRANSITION (FOAMM.AALLE4)
- HOPPP TRANSITION (HOPPP.AALLE4)
- MALTE TRANSITION (MALTE.AALLE4)
- MILKK TRANSITION (MILKK.AALLE4)
- NYTRO TRANSITION (NYTRO.AALLE4)
- PORDR TRANSITION (PORDR.AALLE4)
- SDOUT TRANSITION (SDOUT.AALLE4)
- YEAST TRANSITION (YEAST.AALLE4)

(CONTINUED ON FOLLOWING PAGE)

(A)AILE:A(ALL)E4 25163

A(ALL)E FOUR ARRIVAL (RNAV) Transition Routes

DENVER INTL (D)EN
DENVER, COLORADO

AL-9077 (FAA)

AALIE FOUR ARRIVAL (RNAV) Arrival Routes
 (AALIE, AALIE4) 12JUN25

AALIE FOUR ARRIVAL (RNAV) Arrival Routes

DENVER, COLORADO
 DENVER INTL (DEN)

DENVER APP CON
 124.95 346.4
 D-ATIS ARR
 125.6 379.9
 DENVER TOWER
 128.75 273.55 (Rwy 7-25)
 132.35 239.275 (Rwys 8-26, 17L-35R)
 124.3 322.45 (Rwy 17R-35L)
 135.3 351.95 (Rwys 16L-34R, 16R-34L)

RNAV 1 - DME/DME/IRU or GPS.
 RADAR required.

AALLE
 FL220 280K
 FL190

KIPPR
 12000 210K
 Ldg Rwys 16L/R, 17L/R

HIGUN
 14000 210K

HEDDD
 FL190 250K
 16000

CRUNK
 14000
 Ldg Rwys 25, 26

DEELO
 17000
 15000

JEPHF
 15000 250K
 13000

FULLA
 15000 250K
 13000

HAITR
 11000 210K
 Ldg Rwys 7, 8

HAZLT
 (5) 236° (110)

FFFAT
 (6) 230° (10)

GRILA
 (5) 173° (5)

HIMOM
 11000 210K
 Ldg Rwys 34L/R

DOGGG
 11000 210K
 Ldg Rwys 35L/R



- NOTE: Jet aircraft only.
- NOTE: BBOTL, FOAMM, MALTE, CAASK, AALLE, BIDDR, HOPPP, MILKK, SDOUT and YEAST Transitions, ATC assigned only.
- NOTE: Denver Center will issue "descend via" clearance and landing direction.
- NOTE: Expect runway assignment on initial contact with Denver TRACON.
- NOTE: Landing North select Rwy 35R Transition.
- NOTE: Landing South select Rwy 16L Transition.
- NOTE: Landing East select Rwy 7 Transition.
- NOTE: Landing West select Rwy 26 Transition.

NOTE: Chart not to scale.

(CONTINUED ON FOLLOWING PAGE)

(AALIE, AALIE4) 25163
 AALIE FOUR ARRIVAL (RNAV) Arrival Routes
 AL-9077 (FAA)

DENVER INTL (DEN)
 DENVER, COLORADO

ARRIVAL ROUTE DESCRIPTION

From AALLE on track 231° to cross HEDDD between 16000 and FL190 and at 250K.

LANDING RUNWAYS 7, 8: From HEDDD on track 211° to cross DEELO between 15000 and 17000, then on track 222° to cross JEPHF between 13000 and 15000 and at 250K, then on track 236° to HAZLT, then on track 263° to cross HAITR at 11000 and at 210K, then on track 263°. Expect RADAR vectors to final approach course.

LANDING RUNWAYS 16L/R, 17L/R: From HEDDD on track 269° to cross HIGUN at 14000 and at 210K, then on track 265° to cross KIPPR at 12000 and at 210K. Expect ILS or LOC RWY 16L, RWY 16R, RWY 17L, RWY 17R approach.

LANDING RUNWAYS 25, 26: From HEDDD on track 217° to cross CRUNK at 14000, then on track 217°. Expect RADAR vectors to final approach course.

LANDING RUNWAYS 34L/R: From HEDDD on track 211° to cross DEELO between 15000 and 17000, then on track 222° to cross JEPHF between 13000 and 15000 and at 250K, then on track 236° to HAZLT, then on track 236° to GRILA, then on track 173° to cross HIMOM at 11000 and at 210K, then on track 173°. Expect RADAR vectors to final approach course.

LANDING RUNWAYS 35L/R: From HEDDD on track 211° to cross DEELO between 15000 and 17000, then on track 211° to cross FULLA between 13000 and 15000 and at 250K, then on track 211° to FFFAT, then on track 173° to cross DOGGG at 11000 and at 210K, then on track 173°. Expect RADAR vectors to final approach course.

LOST COMMUNICATIONS: In the event of lost communications prior to runway transition assignment, when DEN is landing south, execute the ILS RWY 16L, when DEN is landing north, execute the ILS RWY 35R.

SW-1, 14 MAY 2026 to 11 JUN 2026

SW-1, 14 MAY 2026 to 11 JUN 2026