

COORZ SEVEN DEPARTURE (RNAV)
 (COORZ, COORZ) 19MAR26

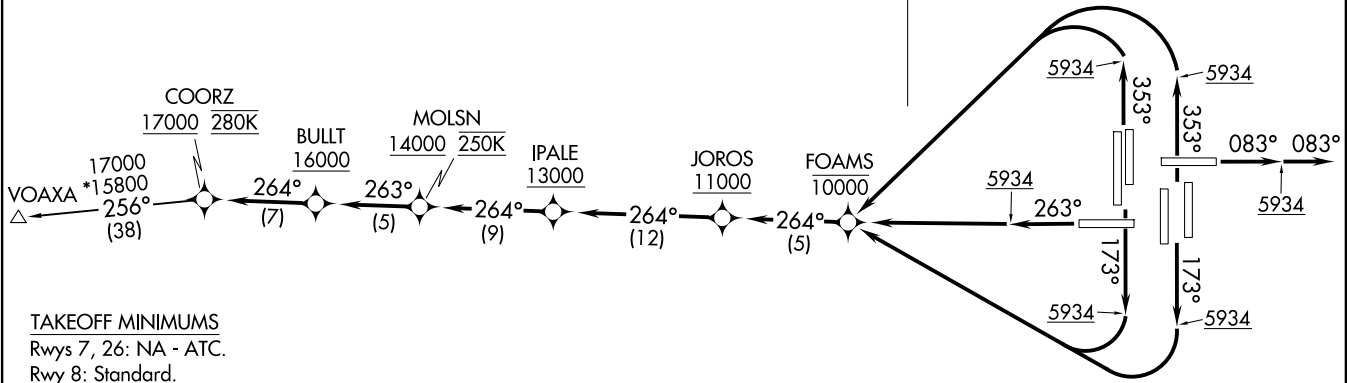
DENVER, COLORADO
 DENVER INTL (DEN)

RNAV 1 - DME/DME/IRU or GPS.
 TAKEOFF Rwy 8 RADAR required.
 TAKEOFF Rws 16L/R, 17L/R, 25, 34L/R, 35L/R
 RADAR required for non-GPS equipped aircraft.

**TOP ALTITUDE:
 FL230**

DENVER DEP CON
 126.1 360.75
 D-ATIS DEP
 134.025
 CLNC DEL
 118.75
 CPDLC

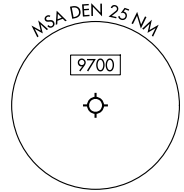
NOTE: Turbojets only.
 NOTE: Accelerate to 250K upon reaching 10000. If slower speed is required
 to meet crossing restrictions, advise CLNC DEL prior to taxi.



TAKEOFF MINIMUMS
 Rws 7, 26: NA - ATC.
 Rwy 8: Standard.

- Rwy 16L: Standard with minimum climb of 400'/NM to 5934, then minimum climb of 215'/NM to 16000.
- Rwy 16R: Standard with minimum climb of 480'/NM to 5934, then minimum climb of 215'/NM to 16000.
- Rwy 17L: Standard with minimum climb of 400'/NM to 5934.
- Rwy 17R: Standard with minimum climb of 400'/NM to 5934, then minimum climb of 205'/NM to 16000.
- Rwy 25: Standard with minimum climb of 425'/NM to 5934, then minimum climb of 225'/NM to 16000.
- Rwy 34L: Standard with minimum climb of 400'/NM to 5934, then minimum climb of 215'/NM to 16000.
- Rwy 34R: Standard with minimum climb of 400'/NM to 5934, then minimum climb of 210'/NM to 16000.
- Rwy 35L: Standard with minimum climb of 360'/NM to 5934, then minimum climb of 205'/NM to 16000.
- Rwy 35R: Standard with minimum climb of 375'/NM to 5934.

(CONTINUED ON FOLLOWING PAGE)



NOTE: Chart not to scale.

(COORZ, COORZ) 26078
 COORZ SEVEN DEPARTURE (RNAV)

AL-9077 (FAA)

DENVER INTL (DEN)
 DENVER, COLORADO



DEPARTURE ROUTE DESCRIPTION
SEE ADDITIONAL REQUIREMENTS ON AAUP

TAKEOFF RUNWAY 8: Climb on heading 083° to 5934, then on heading 083° or as assigned by ATC, for vectors to cross IPALE at or above 13000, thence. . . .

TAKEOFF RUNWAYS 16L/R, 17L/R: Climb on heading 173° to 5934, then right turn direct to cross FOAMS at or below 10000, then on track 264° to cross JOROS at or above 11000, then on track 264° to cross IPALE at or above 13000, thence. . . .

TAKEOFF RUNWAY 25: Climb on heading 263° to 5934, then direct to cross FOAMS at or below 10000, then on track 264° to cross JOROS at or above 11000, then on track 264° to cross IPALE at or above 13000, thence. . . .

TAKEOFF RUNWAYS 34L/R, 35L/R: Climb on heading 353° to 5934, then left turn direct to cross FOAMS at or below 10000, then on track 264° to cross JOROS at or above 11000, then on track 264° to cross IPALE at or above 13000, thence. . . .

. . . .on track 264° to cross MOLSN at or above 14000 and at 250K, then on track 263° to cross BULLT at or above 16000, then on track 264° to cross COORZ at or above 17000 and at 280K. Then on transition. Maintain FL230. Expect higher filed altitude 10 minutes after departure.

VOAXA TRANSITION (COORZ7.VOAXA)

SW-1, 14 MAY 2026 to 11 JUN 2026

SW-1, 14 MAY 2026 to 11 JUN 2026