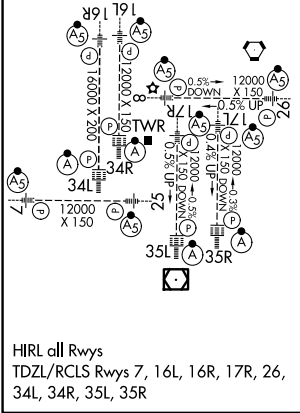
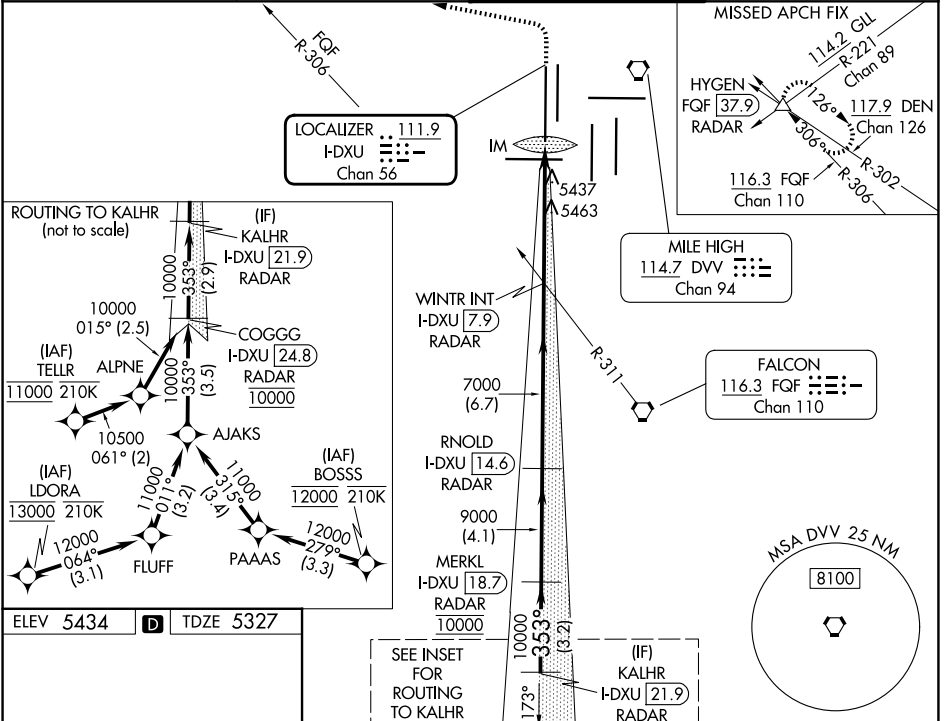


LOC/DME I-DXU 111.9 Chan 56	APP CRS 353°	Rwy Ldg TDZE Apt Elev 16000 5327 5434
---	------------------------	---

ILS RWY 34L (CAT II & III)

DENVER INTL (DEN)

RNP APCH - GPS. From LDORA, BOSSS, TELLR. DME or RADAR required.		ALSf-2 	MISSED APPROACH: Climb to 5800 then climbing left turn to 11000 on heading 270° and on FQF VORTAC R-306 to HYGEN/FQF 37.9 DME/RADAR and hold.
D-ATIS 125.6 379.9	DENVER APP CON 119.3 307.3 (N) 120.35 379.3 (S)	DENVER TOWER 135.3 351.95	GND CON 121.35 379.175 (W) 121.85 377.1 (E)



VGSi and ILS glidepath not coincident (VGSi Angle 3.00/TCH 70).		5800	11000	FQF	HYGEN
KALHR I-DXU [21.9] RADAR	MERKL I-DXU [18.7] RADAR	↑	hdg 270°	R-306	△
10000	9000	7000	5422		
GS 3.00° TCH 55	3.2 NM	4.1 NM	6.7 NM	5.1 NM	1.090
CATEGORY	A	B	C	D	
S-ILS 34L	CAT II RA 108/12 100 DA 5427				
S-ILS 34L	CAT III RVR 03				
CATEGORY II & III ILS - SPECIAL AIRCREW & AIRCRAFT CERTIFICATION REQUIRED					

SW-1, 14 MAY 2026 to 11 JUN 2026

SW-1, 14 MAY 2026 to 11 JUN 2026