

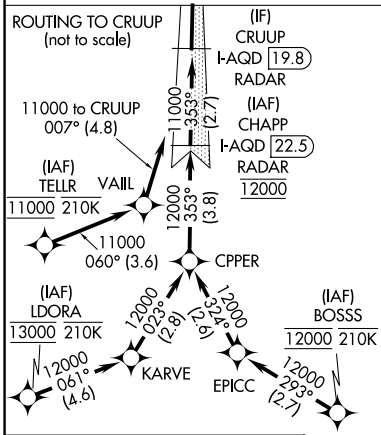
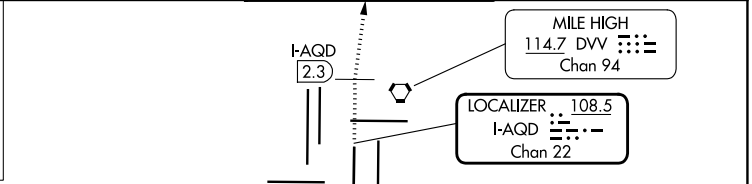
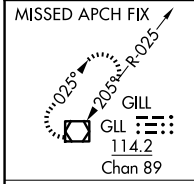
LOC/DME I-AQD <b>108.5</b> Chan <b>22</b>	APP CRS <b>353°</b>	Rwy Ldg TDZE Apt Elev <b>12000</b> <b>5434</b> <b>5434</b>
---	------------------------	---

# ILS RWY 35L (CAT II & III)

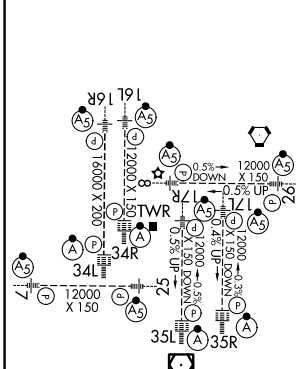
DENVER INTL (DEN)

RNP APCH - GPS. From BOSSS, LDORA or TELLR.		ALSIF-2 	MISSED APPROACH: Climb to 10000 on heading 353° to I-AQD 2.3 DME north of I-AQD and direct GLL VOR/DME and hold.
DME or RADAR required.			
<p>Simultaneous approach authorized. CAT II: RVR 1000 authorized with specific OPSPEC, MSPEC, or LOA approval and use of autoland or HUD to touchdown.</p>			

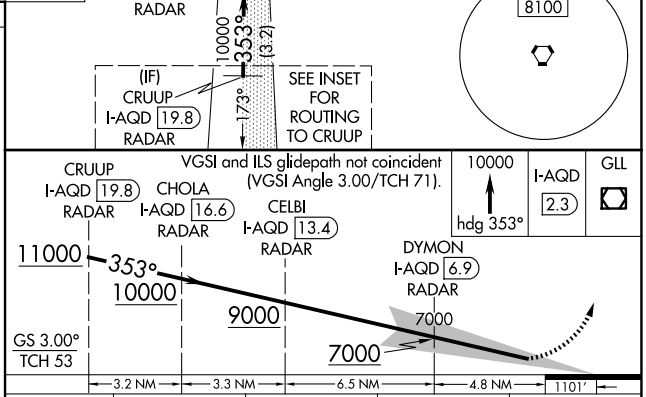
D-ATIS <b>125.6 379.9</b>	DENVER APP CON <b>119.3 307.3 (N)</b> <b>120.35 379.3 (S)</b>	DENVER TOWER <b>124.3 322.45</b>	GND CON <b>121.35 379.175 (W)</b> <b>121.85 377.1 (E)</b>
------------------------------	---	-------------------------------------	---



ELEV 5434	<b>D</b>	TDZE 5434
-----------	----------	-----------



HIRL all Rwys  
TDZL/RCLS Rwys 7, 16L, 16R, 17R, 26, 34L, 34R, 35L, 35R



CATEGORY	A	B	C	D
S-ILS 35L	CAT II RA 115/12 100 DA 5534			
S-ILS 35L	CAT III RVR 03			

SW-1, 14 MAY 2026 to 11 JUN 2026

SW-1, 14 MAY 2026 to 11 JUN 2026