

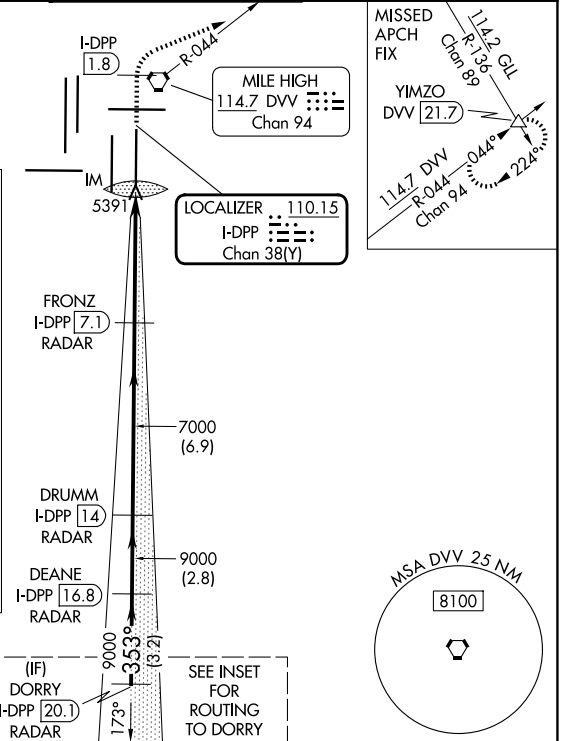
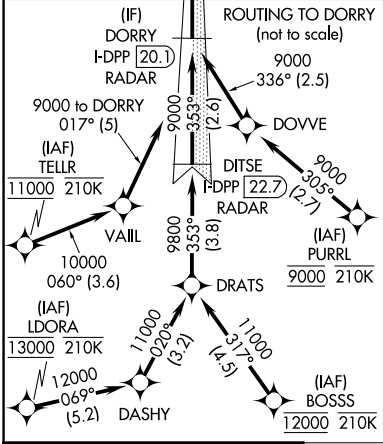
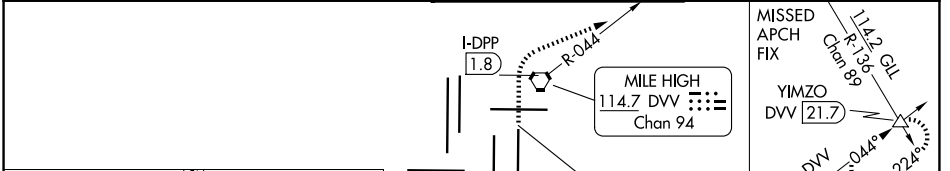
LOC/DME I-DPP 110.15 Chan 38(Y)	APP CRS 353°	Rwy Ldg 12000 TDZE 5370 Apt Elev 5434
---	------------------------	--

ILS RWY 35R (CAT II & III)

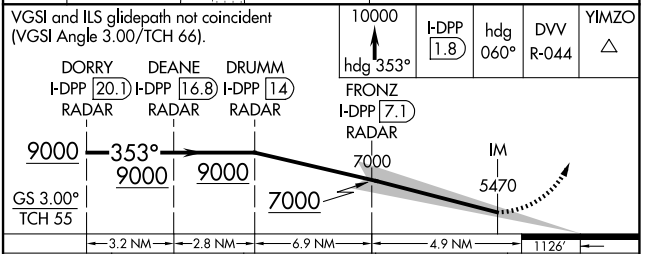
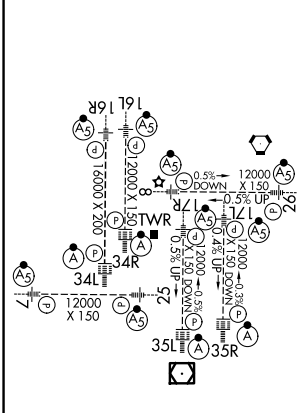
DENVER INTL (DEN)

RNP APCH - GPS. From BOSSS, LDORA, PURRL or TELLR. DME or RADAR required.	ALSF-2 	MISSED APPROACH: Climb to 10000 on heading 353° to 1.8 DME north of I-DPP and continue climb on heading 060° to DVV VORTAC R-044 to YIMZO INT/DVV 21.7 DME and hold.
▼ CAT II: RVR 1000 authorized with specific OPSPEC, MSPEC, or LOA approval and use of autoland or HUD to touchdown. Simultaneous approach authorized.		

D-ATIS 125.6 379.9	DENVER APP CON 119.3 307.3 (N) 120.35 379.3 (S)	DENVER TOWER 132.35 239.275	GND CON 121.35 379.175 (W) 121.85 377.1 (E)
------------------------------	---	---------------------------------------	---



ELEV 5434	D	TDZE 5370
-----------	----------	-----------



CATEGORY	A	B	C	D
S-ILS 35R	CAT II RA 111/12 100 DA 5470			
S-ILS 35R	CAT III RVR 03			

CATEGORY II & III ILS - SPECIAL AIRCREW & AIRCRAFT CERTIFICATION REQUIRED

SW-1, 14 MAY 2026 to 11 JUN 2026

SW-1, 14 MAY 2026 to 11 JUN 2026