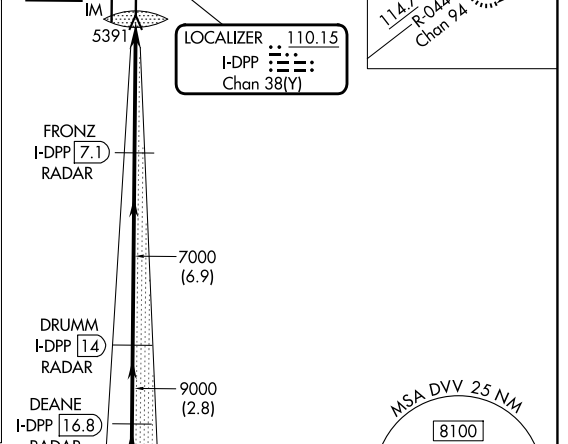
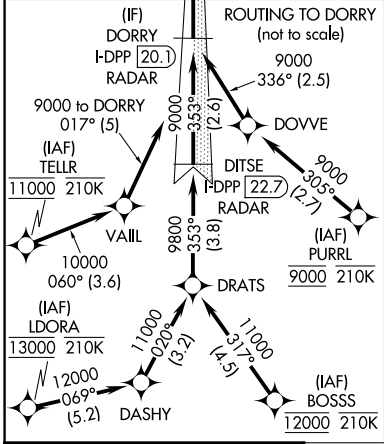
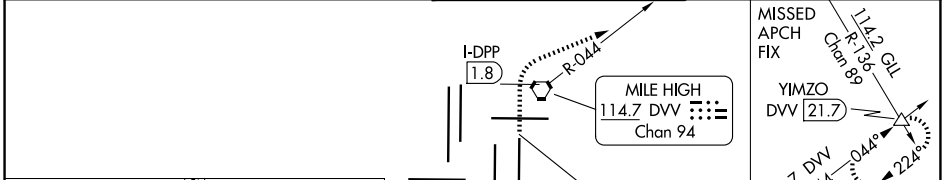


LOC/DME I-DPP <b>110.15</b> Chan <b>38(Y)</b>	APP CRS <b>353°</b>	Rwy Ldg TDZE <b>5370</b> Apt Elev <b>5434</b>
---	------------------------	---

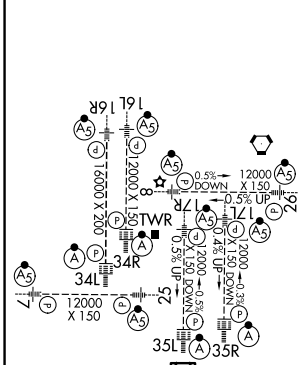
# ILS RWY 35R (SA CAT I)

DENVER INTL (DEN)

RNP APCH - GPS. From BOSSS, LDORA, PURRL or TELLR.		ALSF-2 	MISSED APPROACH: Climb to 10000 on heading 353° to 1.8 DME north of I-DPP and continue climb on heading 060° to DVV VORTAC R-044 to YIMZO INT/DVV 21.7 DME and hold.
DME or RADAR required.			
Requires specific OPSPEC, MSPEC, or LOA approval. Simultaneous approach authorized.			
D-ATIS <b>125.6 379.9</b>	DENVER APP CON <b>119.3 307.3 (N)</b> <b>120.35 379.3 (S)</b>	DENVER TOWER <b>132.35 239.275</b>	GND CON <b>121.35 379.175 (W)</b> <b>121.85 377.1 (E)</b>



ELEV 5434	<b>D</b>	TDZE 5370
-----------	----------	-----------



VGSi and ILS glidepath not coincident (VGSi Angle 3.00/TCH 66).				
DORRY I-DPP 20.1 RADAR	DEANE I-DPP 16.8 RADAR	DRUMM I-DPP 14 RADAR	FRONZ I-DPP 7.1 RADAR	IM
9000	9000	9000	7000	
hdg 353°			hdg 060°	DVV R-044
I-DPP 1.8				YIMZO △
CATEGORY	A	B	C	D
S-ILS 35R	RA 161/14 150 DA 5520			

**SA CATEGORY I ILS - SPECIAL AIRCREW & AIRCRAFT CERTIFICATION REQUIRED**

SW-1, 14 MAY 2026 to 11 JUN 2026

SW-1, 14 MAY 2026 to 11 JUN 2026