

LOC/DME I-DQOQ <b>111.9</b> Chan <b>56</b>	APP CRS <b>173°</b>	Rwy Ldg <b>16000</b> TDZE <b>5326</b> Apt Elev <b>5434</b>
--	------------------------	--

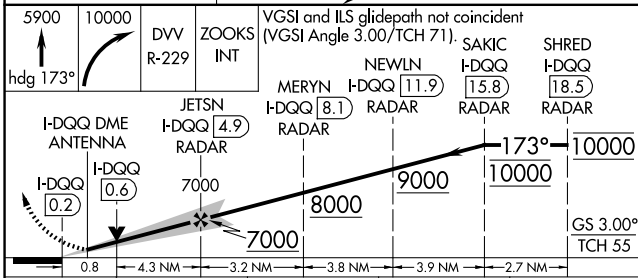
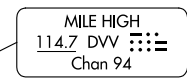
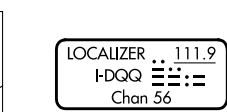
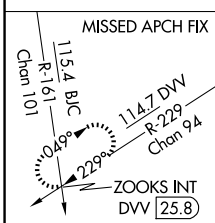
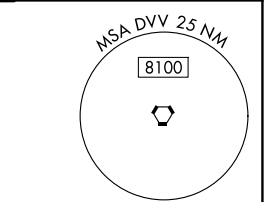
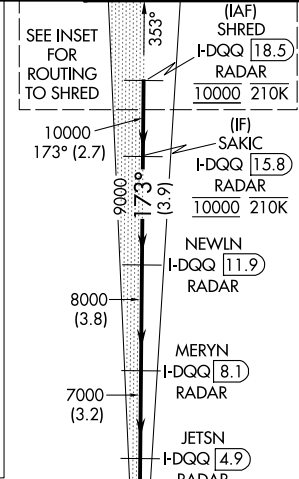
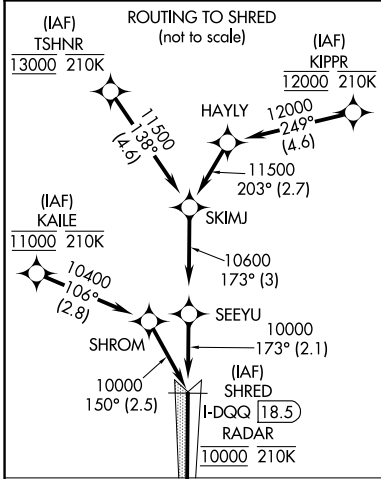
# ILS or LOC RWY 16R

DENVER INTL (DEN)

RNP APCH - GPS. From KALE, KIPPR or TSHNR.  
DME or RADAR required.  
Simultaneous approach authorized. For inop ALS, increase S-LOC 16L Cat C/D visibility to RVR 4500.

MALSR  
MISSED APPROACH: Climb to 5900 on heading 173° then climbing right turn to 10000 on DVV VORTAC R-229 to ZOOKS INT/DVV 25.8 DME and hold.

D-ATIS <b>125.6 379.9</b>	DENVER APP CON <b>119.3 307.3 (N)</b> <b>120.35 379.3 (S)</b>	DENVER TOWER <b>135.3 351.95</b>	GND CON <b>121.35 379.175 (W)</b> <b>121.85 377.1 (E)</b>
------------------------------	---	-------------------------------------	---



ELEV 5434	D	TDZE 5326
-----------	---	-----------

173°

191, 190, 189, 188, 187, 186, 185, 184, 183, 182, 181, 180, 179, 178, 177, 176, 175, 174, 173, 172, 171, 170, 169, 168, 167, 166, 165, 164, 163, 162, 161, 160, 159, 158, 157, 156, 155, 154, 153, 152, 151, 150, 149, 148, 147, 146, 145, 144, 143, 142, 141, 140, 139, 138, 137, 136, 135, 134, 133, 132, 131, 130, 129, 128, 127, 126, 125, 124, 123, 122, 121, 120, 119, 118, 117, 116, 115, 114, 113, 112, 111, 110, 109, 108, 107, 106, 105, 104, 103, 102, 101, 100, 99, 98, 97, 96, 95, 94, 93, 92, 91, 90, 89, 88, 87, 86, 85, 84, 83, 82, 81, 80, 79, 78, 77, 76, 75, 74, 73, 72, 71, 70, 69, 68, 67, 66, 65, 64, 63, 62, 61, 60, 59, 58, 57, 56, 55, 54, 53, 52, 51, 50, 49, 48, 47, 46, 45, 44, 43, 42, 41, 40, 39, 38, 37, 36, 35, 34, 33, 32, 31, 30, 29, 28, 27, 26, 25, 24, 23, 22, 21, 20, 19, 18, 17, 16, 15, 14, 13, 12, 11, 10, 9, 8, 7, 6, 5, 4, 3, 2, 1

HIRL all Rwys  
TDZL/RCLS Rwy 7, 16L, 16R, 17R, 26, 34L, 34R, 35L, 35R

FAF to MAP 5.1 NM

Knots	60	90	120	150	180
Min:Sec	5:06	3:24	2:33	2:02	1:42

CATEGORY	A	B	C	D
S-ILS 16R		5526/18	200 (100-½)	
S-LOC 16R		5640/24	314 (300-½)	

SW-1, 14 MAY 2026 to 11 JUN 2026

SW-1, 14 MAY 2026 to 11 JUN 2026