

LOC/DME I-BXP 110.15	APP CRS 173°	Rwy Ldg 12000
Chan 38(Y)		TDZE 5339
		Apt Elev 5434

ILS or LOC RWY 17L

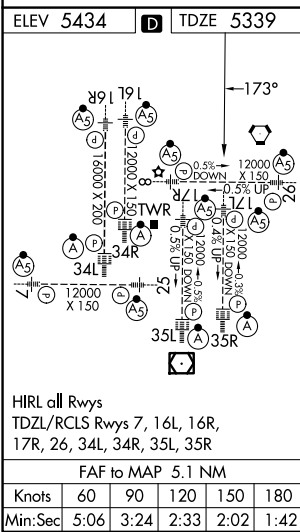
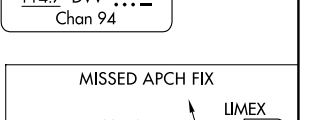
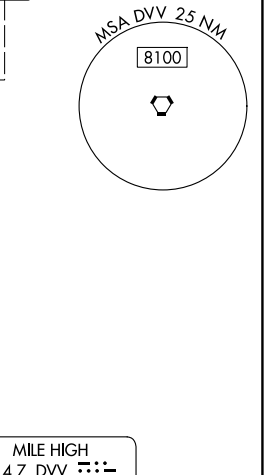
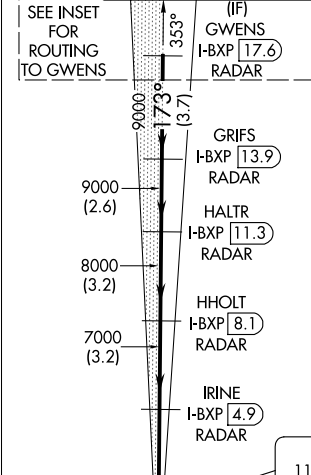
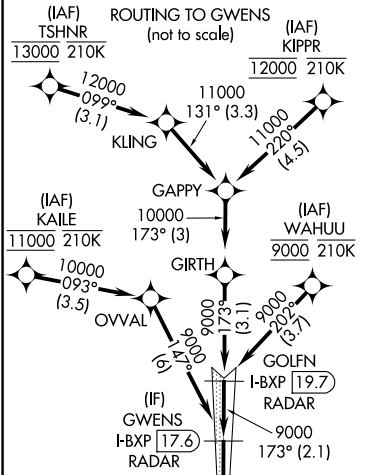
DENVER INTL (DEN)

RNP APCH - GPS. From KAILE, KIPPR, TSHNR or WAHUU.
DME or RADAR required.

Simultaneous approach authorized. For inop ALS, increase S-LOC Cat C and D visibility to RVR 4500.
*RVR 1800 authorized with the use of FD or AP or HUD to DA.

MALSR
MISSED APPROACH: Climb to 5900 then climbing left turn to 10000 on heading 121° and FQG VORTAC R-078 to LIMEX INT/FQG 31.9 DME and hold.

D-ATIS 125.6 379.9	DENVER APP CON 119.3 307.3(N) 120.35 379.3(S)	DENVER TOWER 132.35 239.275	GND CON 121.35 379.175 (W) 121.85 377.1(E)
------------------------------	---	---------------------------------------	--



ELEV 5434	D	TDZE 5339			
5900	10000	FQG R-078	LIMEX	VGSI and ILS glidepath not coincident (VGSI Angle 3.00/TCH 66).	
IRINE I-BXP [4.9] RADAR	HHOLT I-BXP [8.1] RADAR	HALTR I-BXP [11.3] RADAR	GRIFS I-BXP [13.9] RADAR	GWENS I-BXP [17.6] RADAR	
I-BXP [0.2]	I-BXP [0.6]	I-BXP [0.6]	I-BXP [0.6]	I-BXP [0.6]	I-BXP [0.6]
0.8	4.3 NM	3.2 NM	3.2 NM	2.6 NM	3.7 NM
CATEGORY	A	B	C	D	
S-ILS 17L*	5539/24 200 (200-½)				
S-LOC 17L	5640/24 301 (300-½)				

SW-1, 14 MAY 2026 to 11 JUN 2026

SW-1, 14 MAY 2026 to 11 JUN 2026