

LOC/DME I-ACX 108.5 Chan 22	APP CRS 173°	Rwy Ldg TDZE Apt Elev	12000 5392 5434
---	------------------------	-----------------------------	--

ILS or LOC RWY 17R

DENVER INTL (DEN)

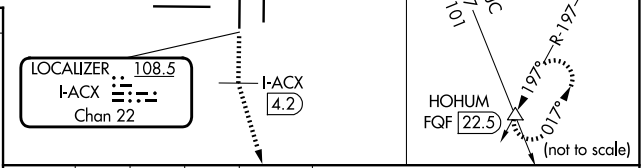
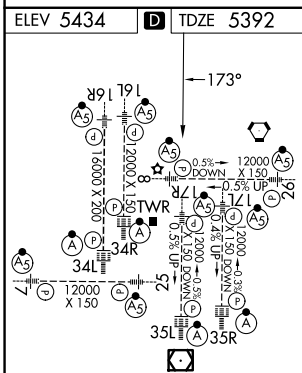
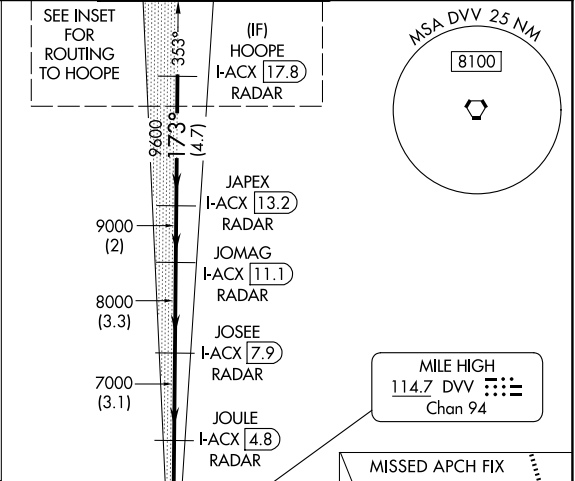
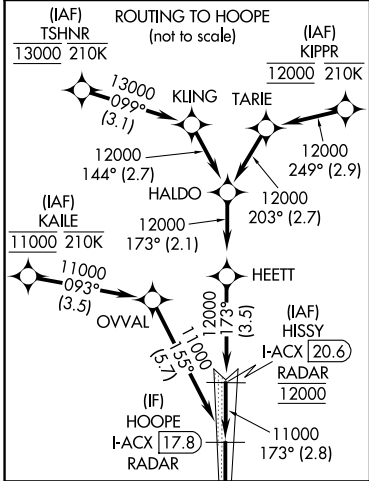
RNP APCH - GPS. From KAILE, KIPPR or TSHNR.
DME or RADAR required.

Simultaneous approach authorized.

MALSR

MISSED APPROACH: Climb to 11000 on heading 173° to I-ACX 4.2 DME south of I-ACX before turning direct FQG VORTAC and on FQG R-197 to HOHUM INT/FQG 22.5 DME and hold.

D-ATIS 125.6 379.9	DENVER APP CON 119.3 307.3 (N) 120.35 379.3 (S)	DENVER TOWER 124.3 322.45	GND CON 121.35 379.175 (W) 121.85 377.1 (E)
------------------------------	---	-------------------------------------	---



HIRL all Rwys TDZL/RCLS Rws 7, 16L, 16R, 17R, 26, 34L, 34R, 35L, 35R	FAF to MAP 4.9 NM	11000	I-ACX [4.2]	FQG R-197	HOHUM	VGSI and ILS glidepath not coincident (VGSI Angle 3.00/TCH 69).	HOOPE I-ACX [17.8] RADAR
Knots	60 90 120 150 180	11000	I-ACX DME ANTENNA	JOULE I-ACX [4.8] RADAR	JOSEE I-ACX [7.9] RADAR	JOMAG I-ACX [13.2] RADAR	JAPEX I-ACX [13.2] RADAR
Min:Sec	4:54 3:16 2:27 1:58 1:38	11000	I-ACX [0.2]	I-ACX [0.7]	I-ACX [4.8]	I-ACX [7.9]	I-ACX [11.1]
CATEGORY	A	B	C	D	S-ILS 17R 5592/18 200 (200-1/2)		
S-LOC 17R	5720/24	328 (300-1/2)	5720/26	328 (300-1/2)	S-LOC 17R 5720/24 328 (300-1/2) 5720/26 328 (300-1/2)		

SW-1, 14 MAY 2026 to 11 JUN 2026

SW-1, 14 MAY 2026 to 11 JUN 2026