

LOC/DME I-DXU 111.9 Chan 56	APP CRS 353°	Rwy Ldg TDZE Apt Elev	16000 5327 5434
---	------------------------	-----------------------------	--

ILS or LOC RWY 34L

DENVER INTL (DEN)

RNP APCH - GPS. From LDORA, BOSSS, TELLR.
DME or RADAR required.
Simultaneous approach authorized. For inop ALS, increase S-LOC Cat C and D visibility to RVR 5500.

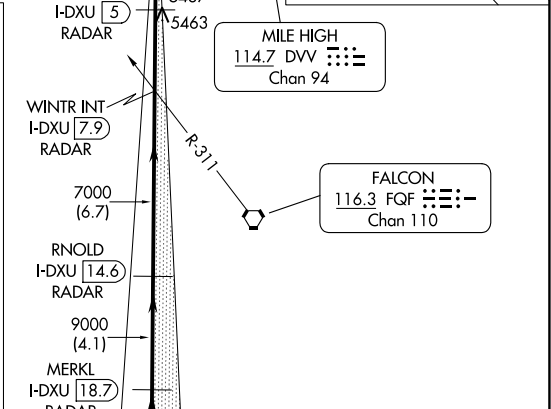
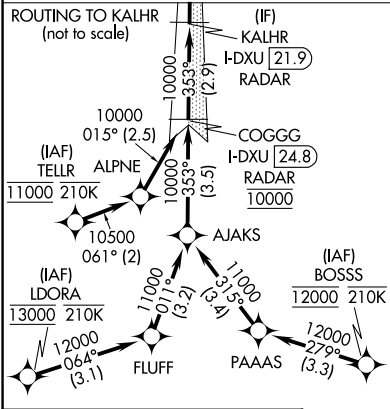
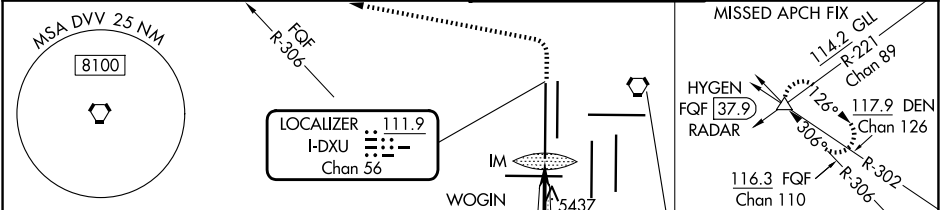
ALSF-2
MISSED APPROACH: Climb to 5800 then climbing left turn to 11000 on heading 270° and on FGF VORTAC R-306 to HYGEN/FQF 37.9 DME/RADAR and hold.

D-ATIS
125.6 379.9

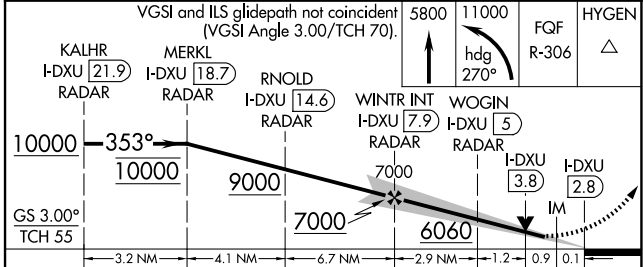
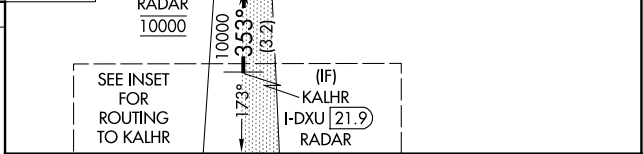
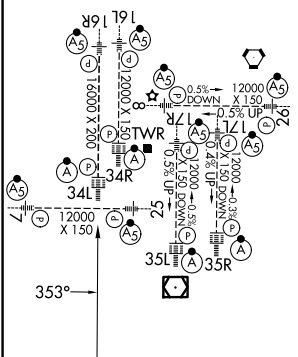
DENVER APP CON
119.3 307.3 (N)
120.35 379.3 (S)

DENVER TOWER
135.3 351.95

GND CON
121.35 379.175 (W)
121.85 377.1 (E)



ELEV 5434 **D** TDZE 5327
TDZL/RCLS rwy's 7, 16L, 16R, 17R, 26, 34L, 34R, 35L, 35R
HIRL all rwy's



CATEGORY	A	B	C	D
S-ILS 34L	5527/18 200 (100-½)			
S-LOC 34L	5700/24 373 (300-½)		5700/35 373 (300-¾)	

FAF to MAP 5.1 NM

Knots	60	90	120	150	180
Min:Sec	5:06	3:24	2:33	2:02	1:42

SW-1, 14 MAY 2026 to 11 JUN 2026

SW-1, 14 MAY 2026 to 11 JUN 2026