

ILS or LOC RWY 35L

DENVER INTL (DEN)

LOC/DME I-AQD 108.5 Chan 22	APP CRS 353°	Rwy Ldg TDZE Apt Elev 12000 5434 5434
--	------------------------	---

RNP APCH - GPS. From BOSSS, LDORA or TELLR.
DME or RADAR required.

Simultaneous approach authorized.

ALSF-2

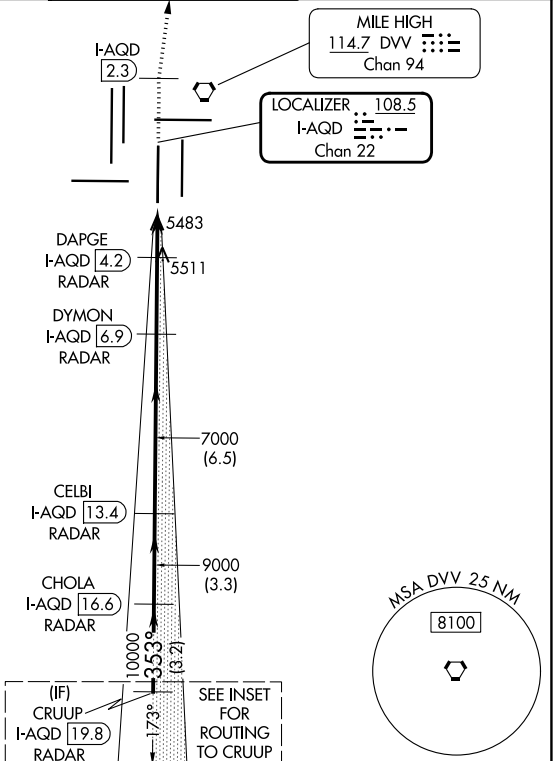
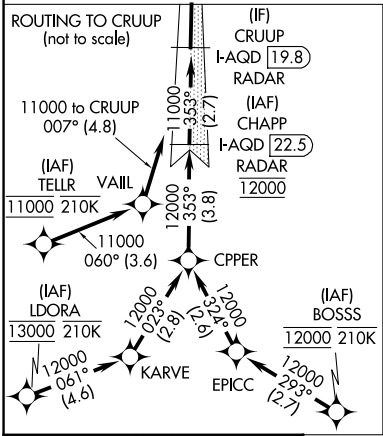
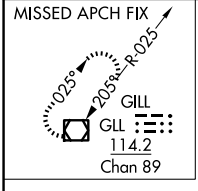
MISSED APPROACH: Climb to 10000 on heading 353° to I-AQD 2.3 DME north of I-AQD and direct GLL VOR/DME and hold.

D-ATIS
125.6 379.9

DENVER APP CON
119.3 307.3 (N)
120.35 379.3 (S)

DENVER TOWER
124.3 322.45

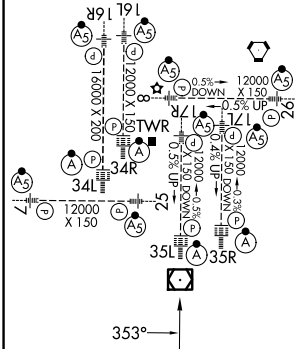
GND CON
121.35 379.175 (W)
121.85 377.1 (E)



SW-1, 14 MAY 2026 to 11 JUN 2026

SW-1, 14 MAY 2026 to 11 JUN 2026

ELEV 5434 **D** TDZE 5434
TDZL/RCLS Rwy 7, 16L, 16R, 17R, 26, 34L, 34R, 35L, 35R
HIRL all Rwy



CRUUP I-AQD 19.8 RADAR	CHOLA I-AQD 16.6 RADAR	CELBI I-AQD 13.4 RADAR	DYMON I-AQD 6.9 RADAR	DAPGE I-AQD 4.2 RADAR	I-AQD 3	I-AQD 2.2	I-AQD 2.3	GLL
11000 → 353° → 10000 → 9000 → 7000 → 6120					hdg 353°			
CATEGORY A		CATEGORY B		CATEGORY C		CATEGORY D		
S-ILS 35L		5634/18		200 (200-½)				
S-LOC 35L		5760/24		326 (400-½)		5760/26		326 (400-½)

FAF to MAP 4.8 NM

Knots	60	90	120	150	180
Min:Sec	4:48	3:12	2:24	1:55	1:36