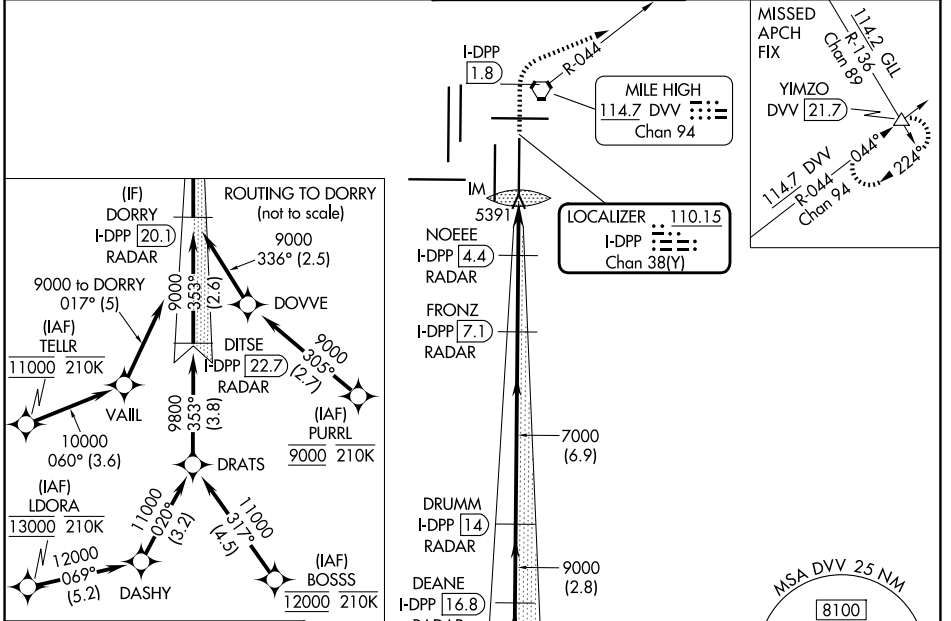


LOC/DME I-DPP 110.15 Chan 38(Y)	APP CRS 353°	Rwy Ldg 12000 TDZE 5370 Apt Elev 5434
---	------------------------	--

ILS or LOC RWY 35R

DENVER INTL (DEN)

RNP APCH - GPS. From BOSSS, LDORA, PURRL or TELLR.		ALSf-2 	MISSED APPROACH: Climb to 10000 on heading 353° to 1.8 DME north of I-DPP and continue climb on heading 060° to DVV VORTAC R-044 to YIMZO INT/DVV 21.7 DME and hold.
DME or RADAR required.			
Simultaneous approach authorized. For inop ALS, increase S-LOC 35R Cat C/D visibility to RVR 5500.			
D-ATIS 125.6 379.9	DENVER APP CON 119.3 307.3 (N) 120.35 379.3 (S)	DENVER TOWER 132.35 239.275	GND CON 121.35 379.175 (W) 121.85 377.1 (E)

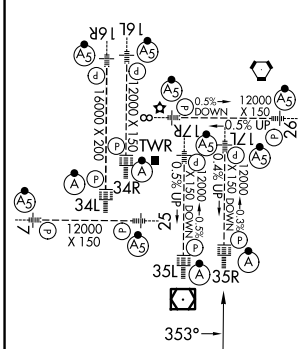


SW-1, 14 MAY 2026 to 11 JUN 2026

SW-1, 14 MAY 2026 to 11 JUN 2026

ELEV 5434 **D** TDZE 5370

HIRL all Rwys
TDZL/RCLS Rwy's 7, 16L, 16R, 17R, 26, 34L, 34R, 35L, 35R



VGSi and ILS glidepath not coincident (VGSi Angle 3.00/TCH 66). DORRY I-DPP 20.1 RADAR DEANE I-DPP 16.8 RADAR DRUMM I-DPP 14 RADAR FRONZ I-DPP 7.1 RADAR NOEEE I-DPP 4.4 RADAR IM I-DPP 2.2		10000	I-DPP 1.8	hdg 060°	DVV R-044	YIMZO △
9000 → 353° → 9000 → 7000 → 6120 → IM						
GS 3.00° TCH 55 -3.2 NM -2.8 NM -6.9 NM -2.7 NM -1.3 NM 0.8 0.1						
CATEGORY	A	B	C	D		
S-ILS 35R	5570/18 200 (200-½)					
S-LOC 35R	5740/24	370 (400-½)	5740/35	370 (400-⅝)		

FAF to MAP 4.9 NM

Knots	60	90	120	150	180
Min:Sec	4:54	3:16	2:27	1:58	1:38