

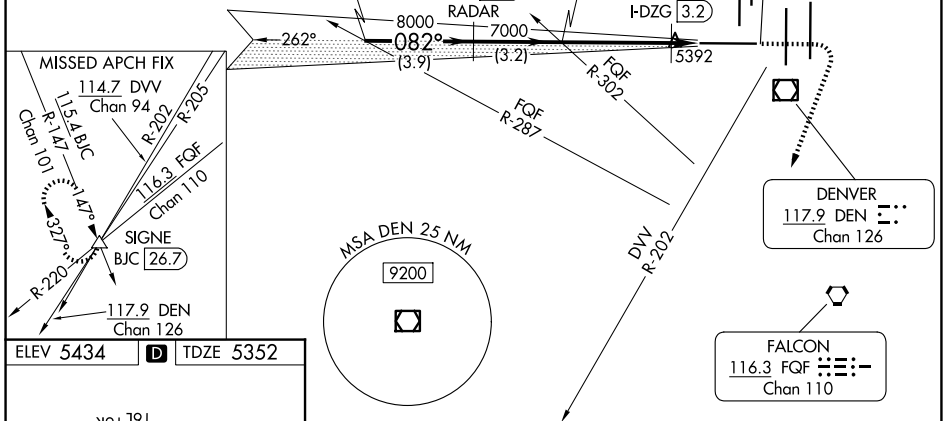
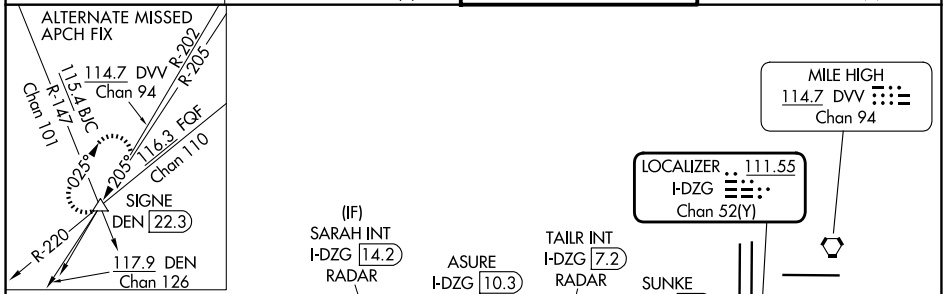
LOC/DME I-DZG 111.55 Chan 52(Y)	APP CRS 082°	Rwy Ldg TDZE Apt Elev	12000 5352 5434
---	------------------------	-----------------------------	--

ILS or LOC RWY 7

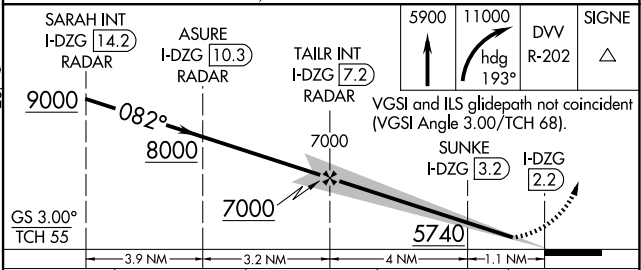
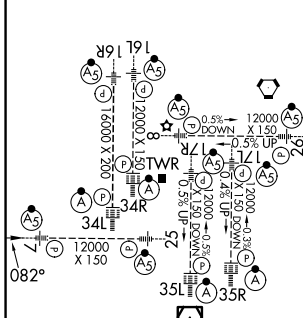
DENVER INTL (DEN)

RADAR required for procedure entry.		MALSR 	MISSED APPROACH: Climb to 5900 then climbing right turn to 11000 on heading 193° and on DVV VORTAC R-202 to SIGNE INT/BJC 26.7 DME and hold. Continue climb-in-hold to 11000.
▼ For inop ALS, increase SUNKE fix Cat C/D visibility to RVR 4500. Simultaneous approach authorized.			

D-ATIS 125.6 379.9	DENVER APP CON 119.3 307.3 (N) 120.35 379.3 (S)	DENVER TOWER 128.75 273.55	GND CON 121.35 379.175 (W) 121.85 377.1 (E)
------------------------------	---	--------------------------------------	---



ELEV 5434	D	TDZE 5352
-----------	---	-----------



CATEGORY	A	B	C	D
S-ILS 7		5552/18	200 (200-½)	
S-LOC 7	5740/24	388 (400-½)	5740/35	388 (400-⅝)
SUNKE FIX MINIMUMS				
S-LOC 7		5660/24	308 (300-½)	

SW-1, 14 MAY 2026 to 11 JUN 2026

SW-1, 14 MAY 2026 to 11 JUN 2026