

LOC/DME I-FUI 108.9 Chan 26	APP CRS 083°	Rwy Ldg TDZE 5354 Apt Elev 5434
------------------------------------------	------------------------	-----------------------------------------------------

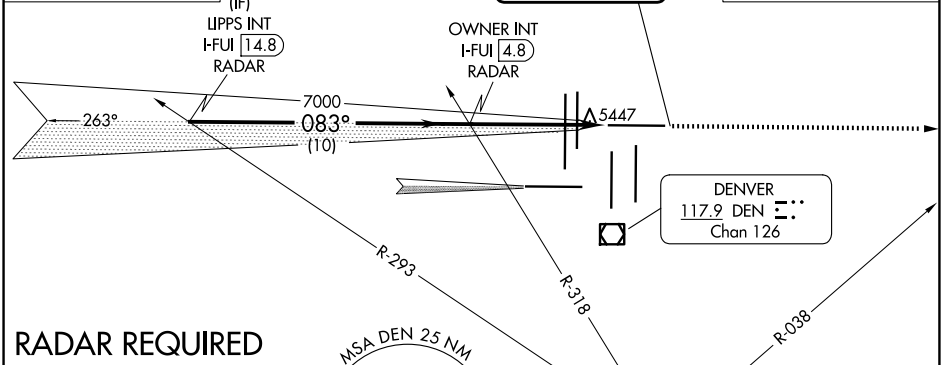
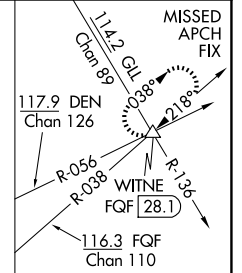
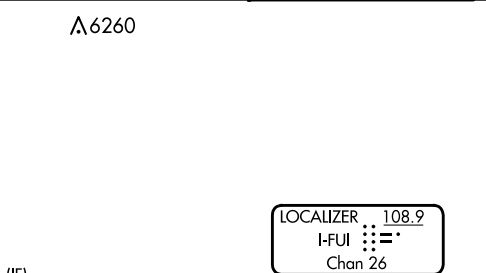
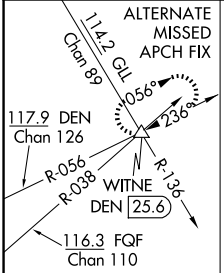
ILS or LOC RWY 8

DENVER INTL (DEN)

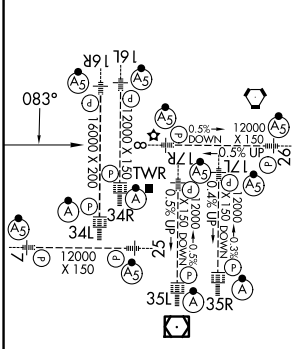
Simultaneous approach authorized with Rwy 7. For inoperative MALSR, increase S-LOC 8 Cat C/D visibility to RVR 5500. ** RVR 1800 authorized with use of FD or AP or HUD to DA.

MALS MISSED APPROACH: Climb to 10000 on heading 083° and on FGF VORTAC R-038 to WITNE INT/FGF 28.1 DME and hold.

D-ATIS 125.6 379.9	DENVER APP CON 119.3 307.3 (N) 120.35 379.3 (S)	DENVER TOWER 132.35 239.275	GND CON 121.35 379.175 (W) 121.85 377.1 (E)
------------------------------	---------------------------------------------------------------------	---------------------------------------	-----------------------------------------------------------------



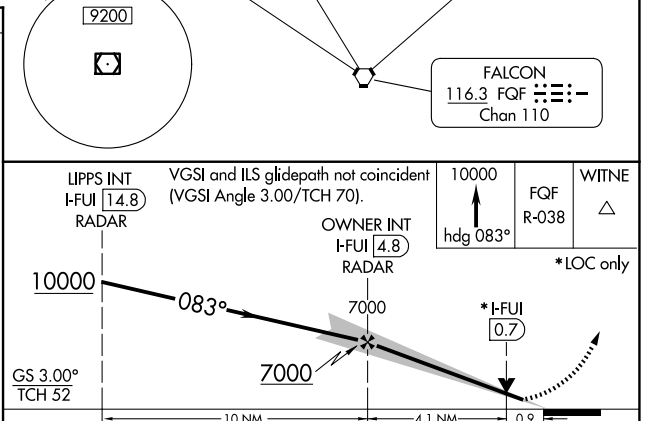
ELEV 5434	D	TDZE 5354
-----------	----------	-----------



HIRL all Rwys
TDZL/RCLS Rwy 7, 16L, 16R, 17R, 26, 34L, 34R, 35L, 35R

FAF to MAP 5 NM

Knots	60	90	120	150	180
Min:Sec	5:00	3:20	2:30	2:00	1:40



GS 3.00° TCH 52	10 NM		4.1 NM		0.9
CATEGORY	A	B	C	D	
S-ILS 8**	5554/24		200 (200-½)		
S-LOC 8	5700/24 346 (300-½)		5700/30 346 (300-⅝)		

SW-1, 14 MAY 2026 to 11 JUN 2026

SW-1, 14 MAY 2026 to 11 JUN 2026