

# RNAV (RNP) Z RWY 26


DENVER INTL (DEN)

APP CRS <b>263°</b>	Rwy Ldg TDZE Apt Elev	<b>12000</b> <b>5309</b> <b>5434</b>
------------------------	-----------------------------	--

**RNP AR APCH.**

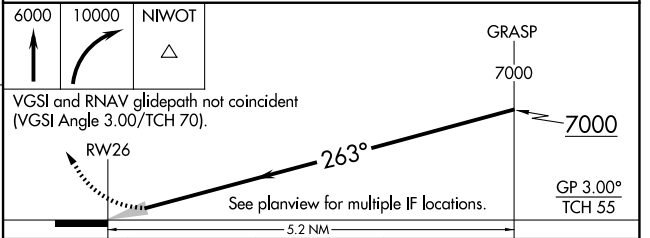
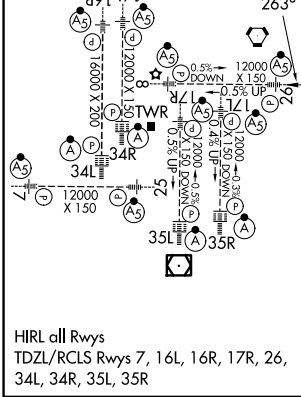
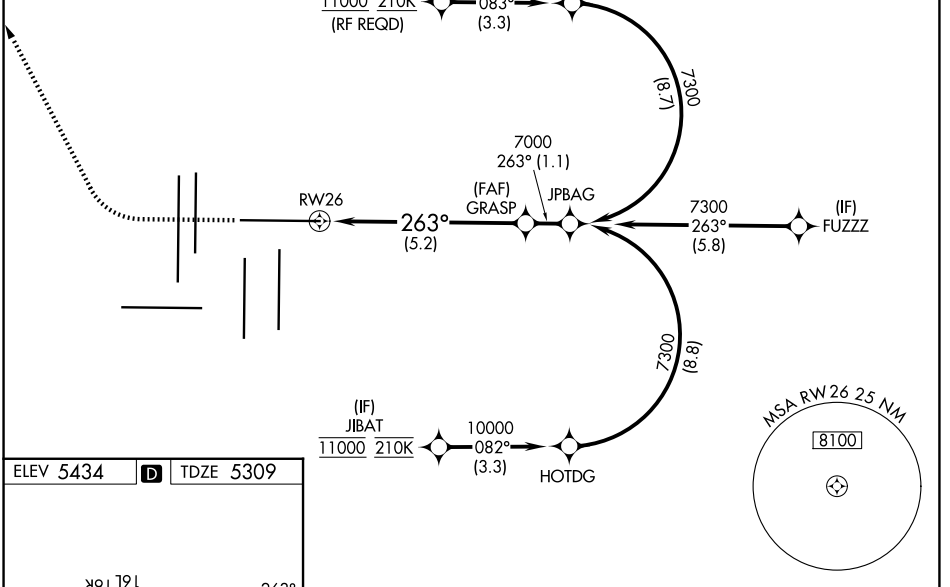
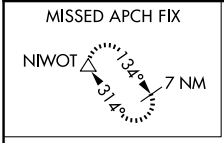
Simultaneous approach authorized. For uncompensated Baro-VNAV systems, procedure NA below -23°C or above 54°C. For inop ALS, increase RNP 0.15 all Cats visibility to RVR 4000, and increase RNP 0.30 all Cats visibility to RVR 4500.

**MALSR**



MISSED APPROACH: Climb to 6000 then climbing right turn to 10000 direct NIWOT and hold.

D-ATIS <b>125.6 379.9</b>	DENVER APP CON <b>119.3 307.3 (N)</b> <b>120.35 379.3 (S)</b>	DENVER TOWER <b>132.35 239.275</b>	GND CON <b>121.35 379.175 (W)</b> <b>121.85 377.1 (E)</b>
------------------------------	---	---------------------------------------	---



CATEGORY	A	B	C	D
RNP 0.15 DA		5566/24	257 (200-½)	
RNP 0.30 DA		5611/24	302 (200-½)	

## AUTHORIZATION REQUIRED

SW-1, 14 MAY 2026 to 11 JUN 2026

SW-1, 14 MAY 2026 to 11 JUN 2026