

RNAV (RNP) Z RWY 35L

DENVER INTL (DEN)

APP CRS 353°	Rwy Ldg TDZE Apt Elev	12000 5434 5434
------------------------	-----------------------------	--

RNP AR APCH - GPS. Authorization required.

▼ For uncompensated Baro-VNAV systems, procedure NA below -26°C or above 54°C. For inop ALS, increase RNP 0.10 all Cats visibility to RVR 4500. Simultaneous approach authorized.

ALSF-2

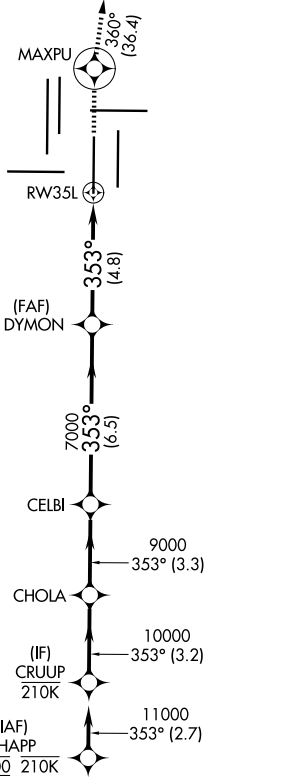
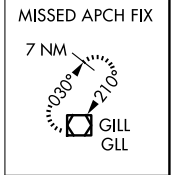
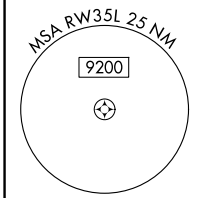
MISSED APPROACH: Climb to 10000 direct MAXPU and track 360° to GLL VOR/DME and hold.

D-ATIS
125.6 379.9

DENVER APP CON
119.3 307.3 (N)
120.35 379.3 (S)

DENVER TOWER
124.3 322.45

GND CON
121.35 379.175 (W)
121.85 377.1 (E)



ELEV 5434 **D** TDZE 5434

HIRL all Rwys
TDZL/RCLS Rwys 7, 16L, 16R, 17R, 26, 34L, 34R, 35L, 35R

353°

VGSI and RNAV glidepath not coincident (VGSI Angle 3.00/TCH 71).

CRUUP	CHOLA	CELBI	DYMON	RW35L
11000	10000	9000	7000	
GP 3.00°				
TCH 53				
	3.2 NM	3.3 NM	6.5 NM	4.8 NM
CATEGORY	A	B	C	D
RNP 0.10 DA	5695/24		261 (300-1/2)	
RNP 0.30 DA	5760/26		326 (400-1/2)	
AUTHORIZATION REQUIRED				

10000 MAXPU tr 360° GLL

SW-1, 14 MAY 2026 to 11 JUN 2026

SW-1, 14 MAY 2026 to 11 JUN 2026