

WAAS CH 99307 W16A	APP CRS 173°	Rwy Ldg 12000 TDZE 5357 Apt Elev 5434
--	------------------------	--

RNAV (GPS) Y RWY 16L

DENVER INTL (DEN)

RNP APCH - GPS.

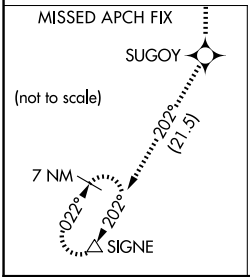
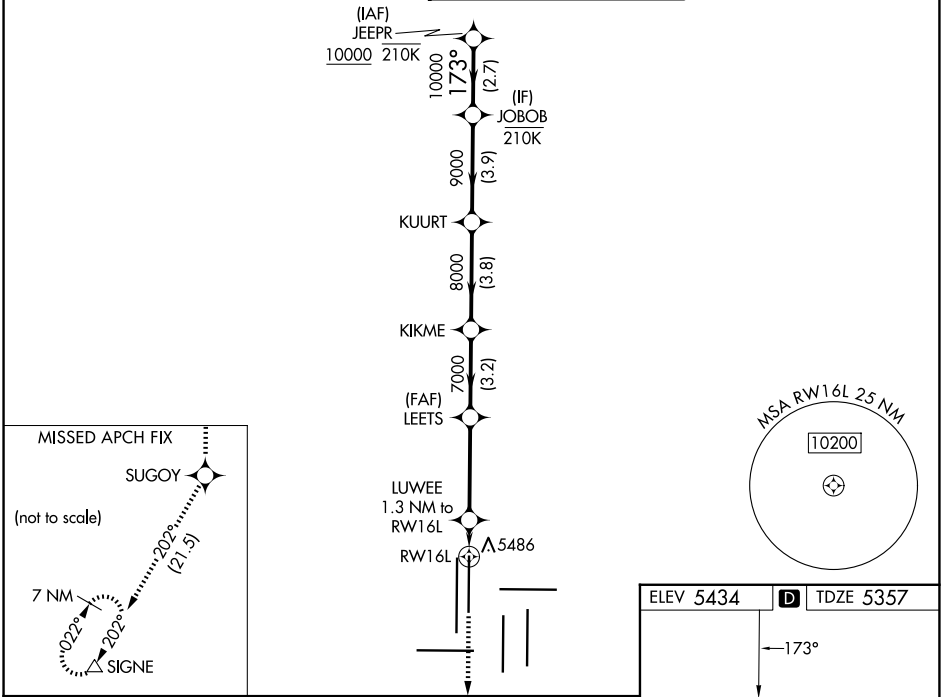
Simultaneous approach authorized. LNAV procedure NA during simultaneous operations. Use of FD or AP required during simultaneous operations. For uncompensated Baro-VNAV systems, LNAV/VNAV NA below -26°C or above 54°C. For inop ALS, increase LNAV/VNAV all Cats visibility, and LNAV Cats C/D visibility to RVR 4500.

MALSR

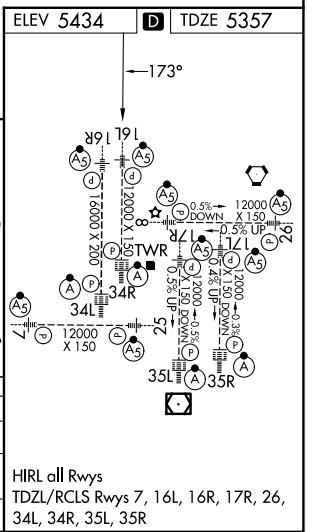


MISSED APPROACH: Climb to 10000 direct SUGOY and on track 202° to SIGNE and hold.

D-ATIS 125.6 379.9	DENVER APP CON 119.3 307.3 (N) 120.35 379.3 (S)	DENVER TOWER 135.3 351.95	GND CON 121.35 379.175 (W) 121.85 377.1 (E)
------------------------------	---	-------------------------------------	---



10000	SUGOY	tr 202°	SIGNE	VGSi and RNAV glidepath not coincident (VGSi Angle 3.00/TCH 71).			
↑	◆		△		10000	10000	
				LEETS	KIKME	KUURT	10000
				7000	8000	9000	10000
				0.8 NM to RWY 16L			GP 3.00° TCH 56
				5820	7000		
				0.8	0.6	3.7 NM	3.2 NM
				A	B	C	D
LPV	DA			5557/18	200 (200-½)		
LNAV/VNAV	DA			5647/24	290 (300-½)		
LNAV	MDA			5660/24	303 (300-½)		



SW-1, 14 MAY 2026 to 11 JUN 2026

SW-1, 14 MAY 2026 to 11 JUN 2026

HIRL all Rwys
TDZL/RCLS Rwys 7, 16L, 16R, 17R, 26, 34L, 34R, 35L, 35R