

WAAS CH 81830 W17A	APP CRS 173°	Rwy Ldg TDZE 12000 5339	Apt Elev 5434
--	------------------------	---	-------------------------


RNAV (GPS) Y RWY 17L

DENVER INTL (DEN)

RNP APCH - GPS.

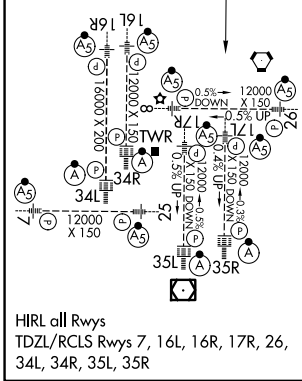
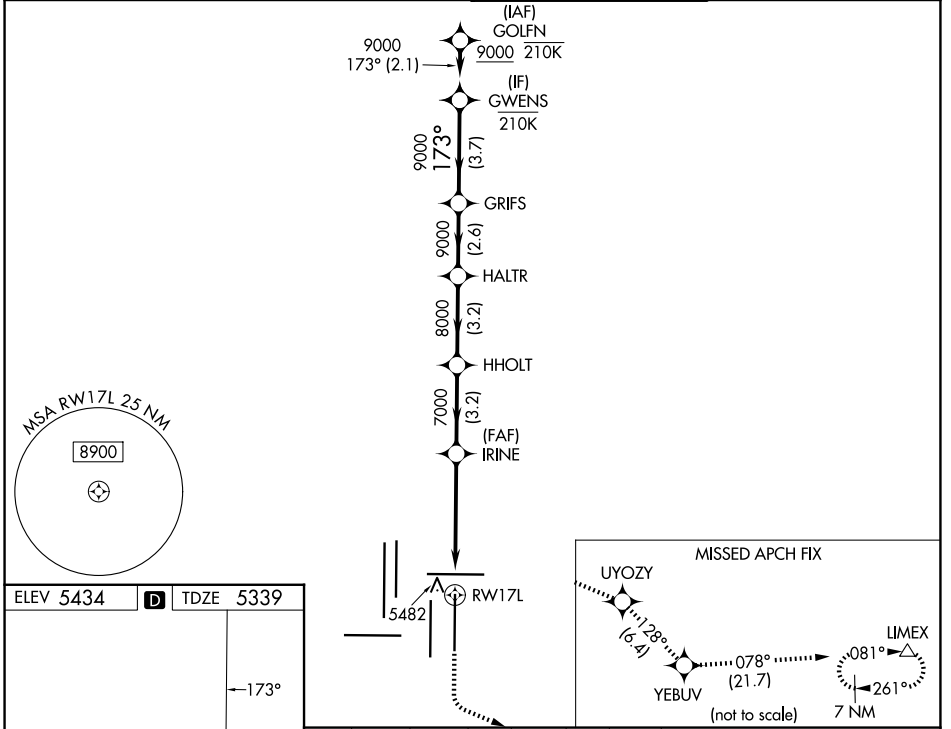
Simultaneous approach authorized. Use of FD or AP required during simultaneous operations. LNAV procedure NA during simultaneous operations.
For uncompensated Baro-VNAV systems, LNAV/VNAV NA below -26°C or above 54°C. For inop ALS increase LNAV/VNAV all Cats visibility to RVR 4500.
*RVR 1800 authorized with use of FD or AP or HUD to DA.

MALSR



MISSED APPROACH: Climb to 5900, then climbing left turn to 10000 direct UYOZY and track 128° to YEBUV and track 078° to LIMEX and hold.

D-ATIS 125.6 379.9	DENVER APP CON 119.3 307.3 (N) 120.35 379.3 (S)	DENVER TOWER 132.35 239.275	GND CON 121.35 379.175 (W) 121.85 377.1 (E)
------------------------------	---	---------------------------------------	---



5900	10000	UYOZY	tr 128°	YEBUV	tr 078°	LIMEX	VGSI and RNAV glidepath not coincident (VGSI Angle 3.00/TCH 66).
							HALTR GRIFS GWENS
			IRINE	HHOLT			
			1 NM to RW17L	7000	8000	9000	9000
			RW17L				GP 3.00° TCH 55
			1 NM	4.1 NM	3.2 NM	2.6 NM	3.7 NM
CATEGORY	A	B	C	D			
LPV DA*	5539/24		200 (200-½)				
LNAV/VNAV DA	5648/24		309 (300-½)				
LNAV MDA	5720/24	381 (300-½)	5720/35	381 (300-⅝)			

SW-1, 14 MAY 2026 to 11 JUN 2026

SW-1, 14 MAY 2026 to 11 JUN 2026