

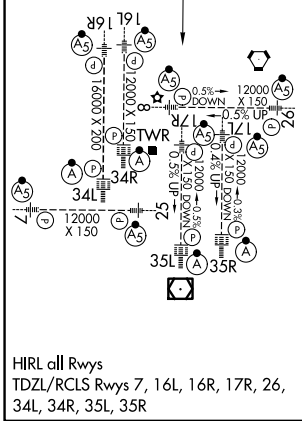
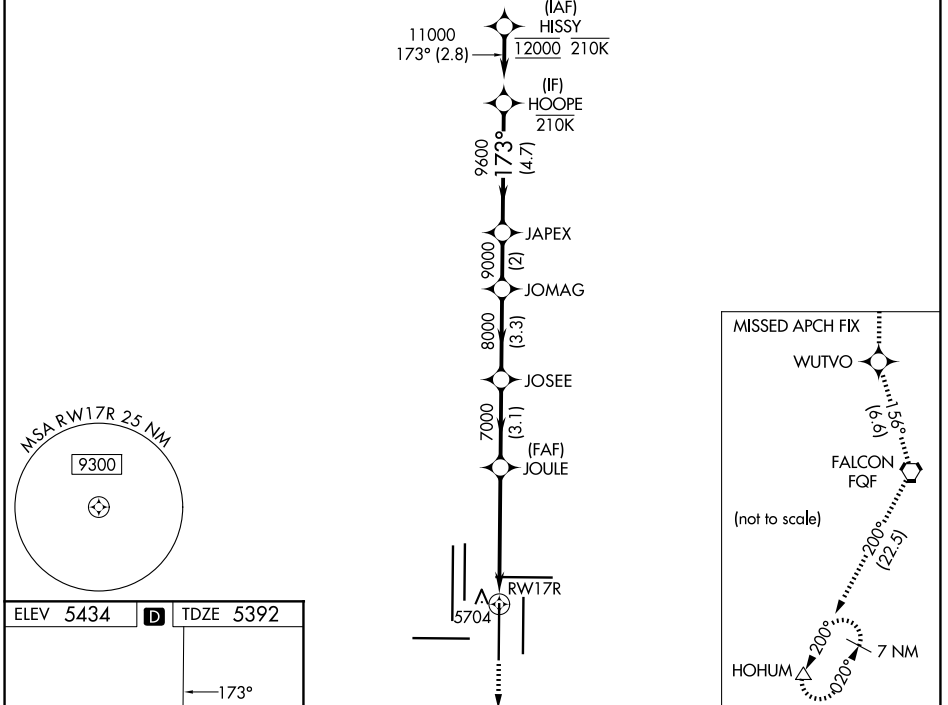
WAAS CH 93529 W17B	APP CRS 173°	Rwy Ldg TDZE 5392 Apt Elev 5434
--	------------------------	---

RNAV (GPS) Y RWY 17R

DENVER INTL (DEN)

RNP APCH - GPS.	MALS R	MISSED APPROACH: Climb to 11000 direct WUTVO and track 156° to FQF VORTAC and track 200° to HOHUM and hold.
<p>▼ LNAV procedure NA during simultaneous operations. Use of FD or AP required during simultaneous operations. For uncompensated Baro-VNAV systems, LNAV/VNAV NA below -26°C or above 54°C. Simultaneous approach authorized. For inop ALS, increase LNAV/VNAV all Cats visibility to 1$\frac{1}{8}$ SM.</p>		

D-ATIS 125.6 379.9	DENVER APP CON 119.3 307.3 (N) 120.35 379.3 (S)	DENVER TOWER 124.3 322.45	GND CON 121.35 379.175 (W) 121.85 377.1 (E)
------------------------------	---	-------------------------------------	---



11000	WUTVO	tr 156°	FQF	tr 200°	HOHUM	VGSi and RNAV glidepath not coincident (VGSi Angle 3.00/TCH 69).				
						JOSE	JOMAG	JAPEX	HOOPE	11000
						JOULE				
						7000	8000	9000	9600	
CATEGORY	A		B		C		D			
LPV DA			5592/18		200 (200- $\frac{1}{2}$)					
LNAV/VNAV DA			5857/50		465 (500-1)					
LNAV MDA	5940/24		548 (600- $\frac{1}{2}$)		5940/60		548 (600-1 $\frac{1}{4}$)			

SW-1, 14 MAY 2026 to 11 JUN 2026

SW-1, 14 MAY 2026 to 11 JUN 2026