

WAAS CH <b>40428</b> <b>W25A</b>	APP CRS <b>263°</b>	Rwy Ldg <b>12000</b> TDZE <b>5355</b> Apt Elev <b>5434</b>
--	------------------------	--

# RNAV (GPS) Y RWY 25

DENVER INTL (DEN)

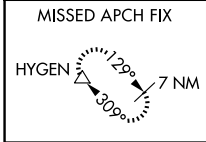
**▽** For uncompensated Baro-VNAV systems, LNAV/VNAV NA below -25°C (-13°F) or above 46°C (116°F). Simultaneous approach authorized with Rwy 26. DME/DME RNP-0.3 NA. Use of FD or AP providing track guidance required during simultaneous operations. LNAV procedure NA during simultaneous operations. For inoperative MALSR, increase LNAV/VNAV all Cats visibility to RVR 4500. #RVR 1800 authorized with use of FD or AP or HUD to DA.

MALSR

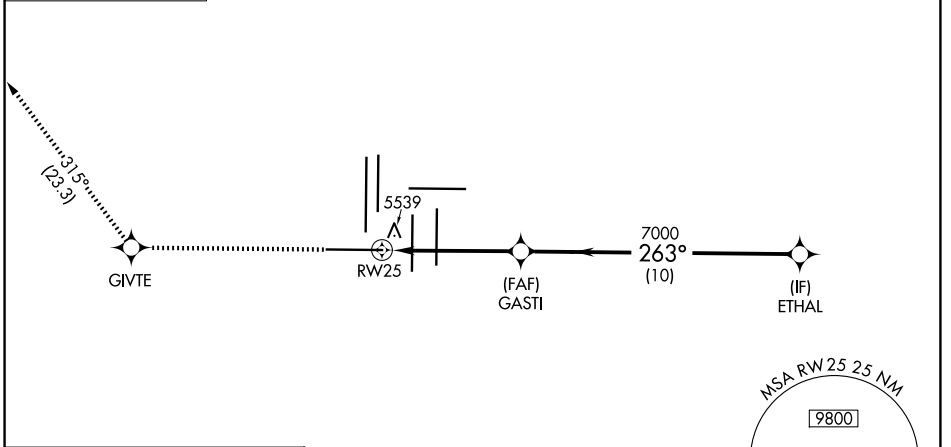


MISSED APPROACH: Climb to 10000 direct GIVTE and on track 315° to HYGEN and hold.

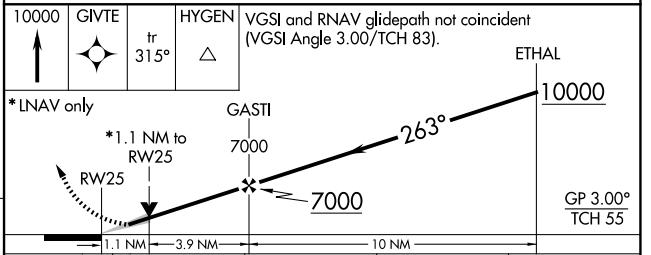
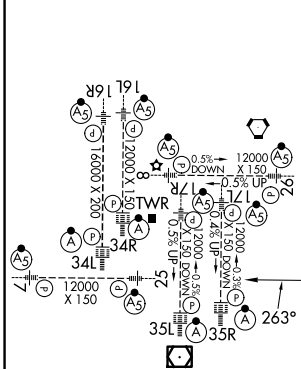
D-ATIS <b>125.6 379.9</b>	DENVER APP CON <b>119.3 307.3 (N)</b> <b>120.35 379.3 (S)</b>	DENVER TOWER <b>128.75 273.55</b>	GND CON <b>121.35 379.175 (W)</b> <b>121.85 377.1 (E)</b>
------------------------------	---	--------------------------------------	---



## RADAR REQUIRED



ELEV 5434 **D** TDZE 5355



CATEGORY	A	B	C	D
LPV DA#	5555/24 200 (200-½)			
LNAV/VNAV DA	5700/30 345 (300-⅝)			
LNAV MDA	5800/24 445 (400-½)		5800/45 445 (400-⅞)	

HIRL all Rwy  
TDZL/RCLS Rwy 7, 16L, 16R, 17R, 26,  
34L, 34R, 35L, 35R

# DENVER INTL (DEN)

## RNAV (GPS) Y RWY 25