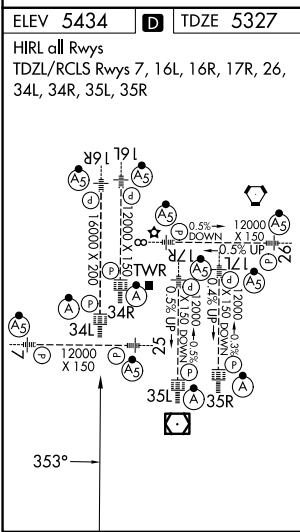
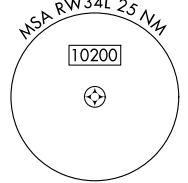
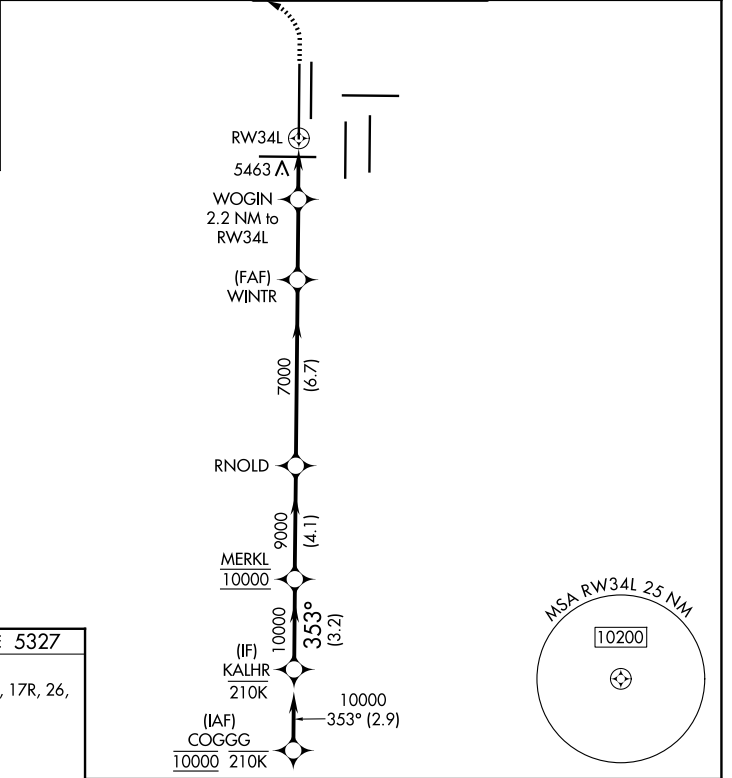
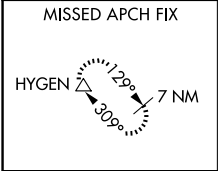


WAAS CH 45619 W34A	APP CRS 353°	Rwy Ldg 16000 TDZE 5327 Apt Elev 5434
--	------------------------	--

RNAV (GPS) Y RWY 34L

DENVER INTL (DEN)

RNP APCH - GPS.		ALSF-2	MISSED APPROACH: Climb to 5900 then climbing left turn to 11000 direct HYGEN and hold.
<p>▼ For uncompensated Baro-VNAV systems, LNAV/VNAV NA below -22°C or above 54°C. LNAV procedure NA during simultaneous operations. Use of FD or AP required during simultaneous operations. Simultaneous approach authorized.</p>			
D-ATIS 125.6 379.9	DENVER APP CON 119.3 307.3 (N) 120.35 379.3 (S)	DENVER TOWER 135.3 351.95	GND CON 121.35 379.175 (W) 121.85 377.1 (E)



KALHR		VGSi and RNAV glidepath not coincident (VGSi Angle 3.00/TCH 70).		5900	11000	HYGEN
MERKL		RNOLD				
10000	353°	9000	7000	6060	RW34L	
GP 3.00°	TCH 55	WINTR		WOGIN 2.2 NM to RW34L 1 NM to RW34L		
3.2 NM		4.1 NM		6.7 NM		2.9 NM
CATEGORY A		CATEGORY B		CATEGORY C		CATEGORY D
LPV DA	5527/18		200 (100-½)			
LNAV/VNAV DA	5664/35		337 (300-⅙)			
LNAV MDA	5720/24 393 (300-½)		5720/35 393 (300-⅙)			

SW-1, 14 MAY 2026 to 11 JUN 2026

SW-1, 14 MAY 2026 to 11 JUN 2026