

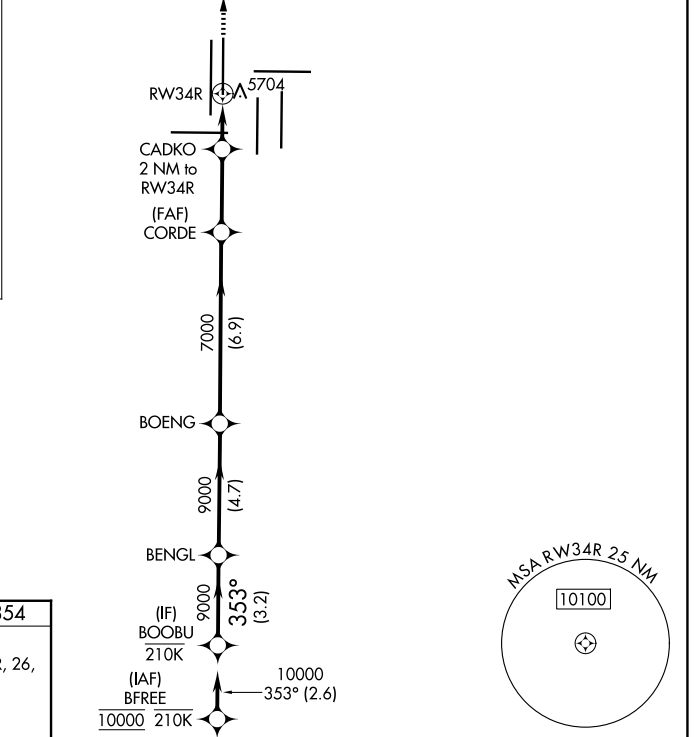
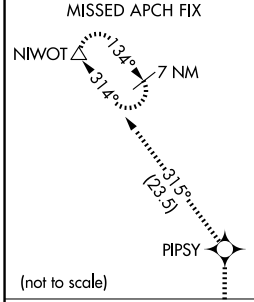
WAAS CH 90318 W34B	APP CRS 353°	Rwy Ldg TDZE Apt Elev	12000 5354 5434
--	------------------------	-----------------------------	--

RNAV (GPS) Y RWY 34R

DENVER INTL (DEN)

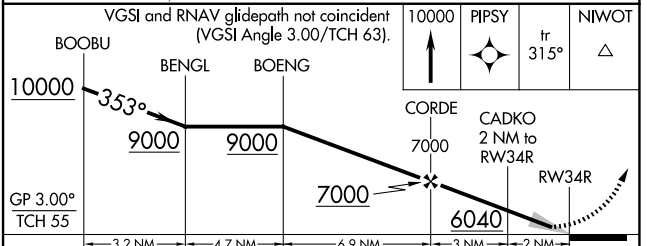
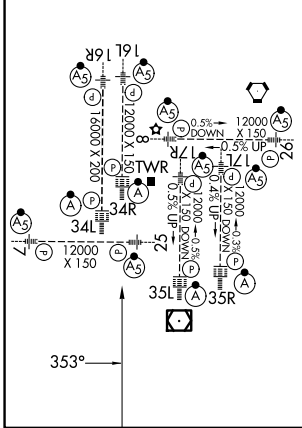
RNP APCH - GPS.	ALSF-2	MISSED APPROACH: Climb to 10000 direct PIPSY and on track 315° to NIWOT and hold.
<p>▼ For uncompensated Baro-VNAV systems, LNAV/VNAV NA below -26°C or above 54°C. Simultaneous approach authorized. Use of FD or AP required during simultaneous operations. LNAV procedure NA during simultaneous operations. For inop ALS, increase LNAV/VNAV all Cats visibility to 1½ SM.</p>		

D-ATIS 125.6 379.9	DENVER APP CON 119.3 307.3 (N) 120.35 379.3 (S)	DENVER TOWER 135.3 351.95	GND CON 121.35 379.175 (W) 121.85 377.1 (E)
------------------------------	---	-------------------------------------	---



ELEV 5434	D	TDZE 5354
-----------	----------	-----------

HIRL all Rwys
TDZL/RCLS Rwys 7, 16L, 16R, 17R, 26, 34L, 34R, 35L, 35R



CATEGORY	A	B	C	D
LPV DA		5554/18	200 (200-½)	
LNAV/VNAV DA		5842/50	488 (500-1)	
LNAV MDA	5940/24	586 (600-½)	5940-1¼	586 (600-1¼)

SW-1, 14 MAY 2026 to 11 JUN 2026

SW-1, 14 MAY 2026 to 11 JUN 2026