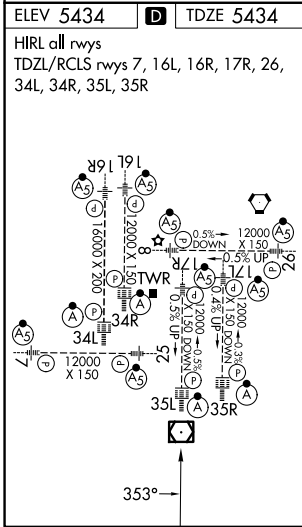
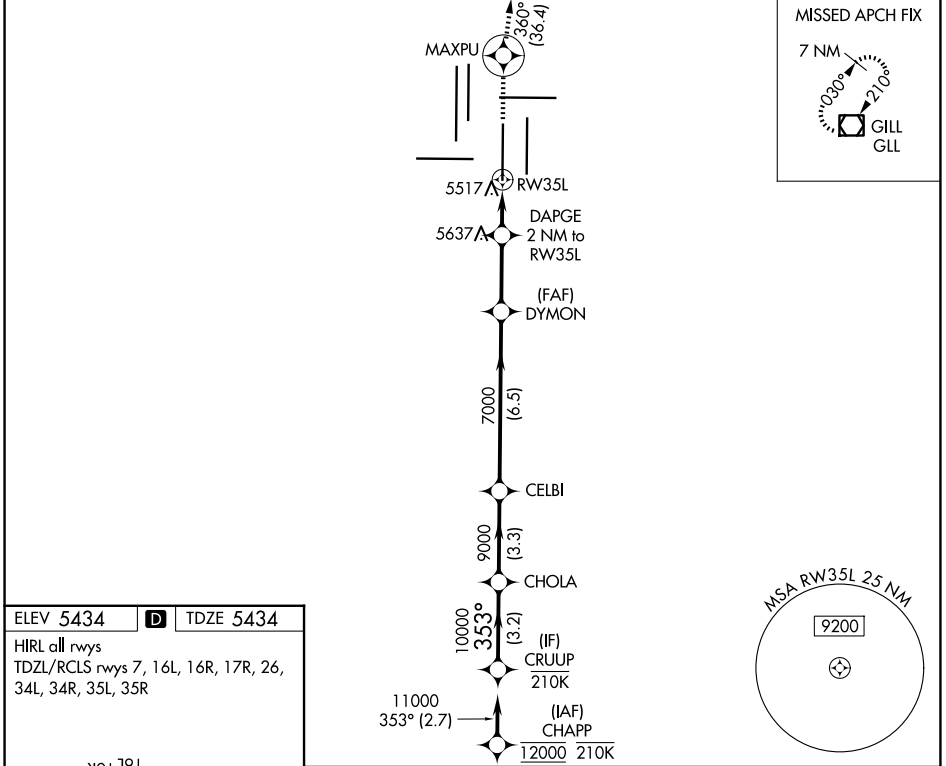


WAAS CH 53419 W35A	APP CRS 353°	Rwy Ldg TDZE 5434 Apt Elev 5434
--	------------------------	---

RNAV (GPS) Y RWY 35L

DENVER INTL (DEN)

RNP APCH - GPS. ▼ For uncompensated Baro-VNAV systems, LNAV/VNAV NA below -26°C or above 54°C. For inop ALS, increase LNAV/VNAV all Cats visibility to RVR 4000, increase LNAV visibility Cat C and Cat D to RVR 5500. LNAV procedure NA during simultaneous operations. Simultaneous approach authorized. Use of FD or AP required during simultaneous operations.		ALS-F-2 	MISSED APPROACH: Climb to 10000 direct MAXPU and on track 360° to GLL VOR/DME and hold.
D-ATIS 125.6 379.9	DENVER APP CON 119.3 307.3 (N) 120.35 379.3 (S)	DENVER TOWER 124.3 322.45	GND CON 121.35 379.175 (W) 121.85 377.1 (E)



VGSI and RNAV glidepath not coincident (VGSI Angle 3.00/TCH 71).

CRUUP	CHOLA	CELBI	DYMON	10000	MAXPU	tr 360°	GLL
11000	9000	7000	6120	DAPGE 2 NM to RW35L 0.9 NM to RW35L			
GP 3.00°							
TCH 53							
	-3.2 NM	-3.3 NM	-6.5 NM	-2.8 NM	1.1 NM	0.9	
CATEGORY	A		B		C		D
LPV DA	5634/18		200 (200-½)				
LNAV/VNAV DA	5684/24		250 (300-½)				
LNAV MDA	5780/24		346 (400-½)		5780/30		346 (400-⅝)

SW-1, 14 MAY 2026 to 11 JUN 2026

SW-1, 14 MAY 2026 to 11 JUN 2026