

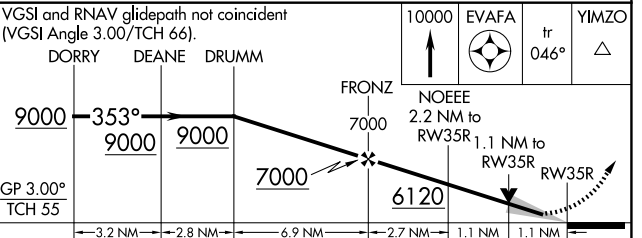
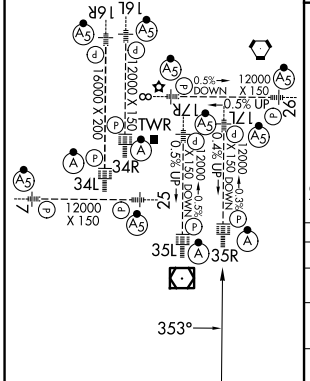
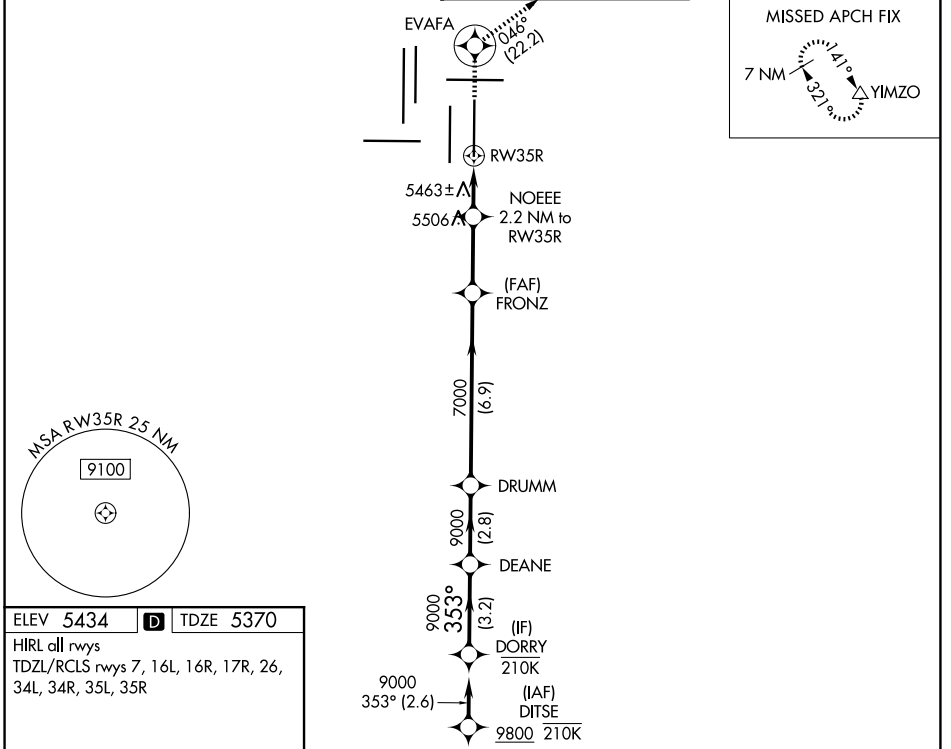
WAAS CH <b>45719</b> <b>W35B</b>	APP CRS <b>353°</b>	Rwy Ldg <b>12000</b> TDZE <b>5370</b> Apt Elev <b>5434</b>
--	------------------------	---

# RNAV (GPS) Y RWY 35R

DENVER INTL (DEN)

RNP APCH - GPS.		ALSF-2 	MISSED APPROACH: Climb to 10000 direct EVAFA and on track 046° to YIMZO and hold.
⚠ For uncompensated Baro-VNAV systems, LNAV/VNAV NA below -26°C or above 54°C. For inop ALS, increase LNAV/VNAV all Cats visibility to RVR 4000. LNAV procedure NA during simultaneous operations. Simultaneous approach authorized. Use of FD or AP required during simultaneous operations.			

D-ATIS <b>125.6 379.9</b>	DENVER APP CON <b>119.3 307.3 (N)</b> <b>120.35 379.3 (S)</b>	DENVER TOWER <b>132.35 239.275</b>	GND CON <b>121.35 379.175 (W)</b> <b>121.85 377.1 (E)</b>
------------------------------	---	---------------------------------------	---



CATEGORY	A	B	C	D
LPV DA		5570/18	200 (200-1/2)	
LNAV/VNAV DA		5620/24	250 (200-1/2)	
LNAV MDA		5800/24	430 (400-1/2)	

SW-1, 14 MAY 2026 to 11 JUN 2026

SW-1, 14 MAY 2026 to 11 JUN 2026