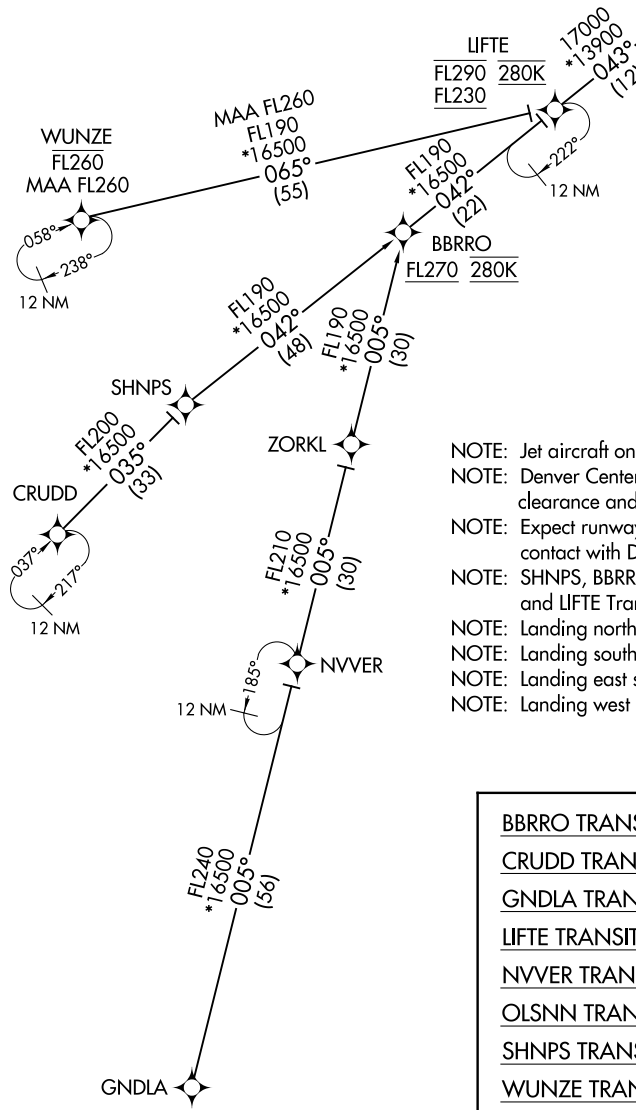
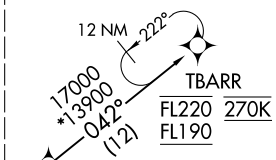


TBARR FOUR ARRIVAL (RNAV) Transition Routes

DENVER APP CON
120.35 379.3
D-ATIS ARR
125.6 379.9
DENVER TOWER
128.75 273.55 (Rwy 7-25)
132.35 239.275 (Rwys 8-26, 17L-35R)
124.3 322.45 (Rwy 17R-35L)
135.3 351.95 (Rwys 16L-34R, 16R-34L)

RNAV 1 - DME/DME/IRU or GPS.
RADAR required.

See following page for arrival routes.



- NOTE: Jet aircraft only.
- NOTE: Denver Center will issue "descend via" clearance and landing direction.
- NOTE: Expect runway assignment on initial contact with Denver TRACON.
- NOTE: SHNPS, BBRRO, NVVER, OLSNN, ZORKL, and LIFTE Transitions, ATC assigned only.
- NOTE: Landing north select Rwy 35L Transition.
- NOTE: Landing south select Rwy 16R Transition.
- NOTE: Landing east select Rwy 7 Transition.
- NOTE: Landing west select Rwy 26 Transition.

NOTE: Chart not to scale.

- BBRRO TRANSITION (BBRRO.TBARR4)
- CRUDD TRANSITION (CRUDD.TBARR4)
- GNDLA TRANSITION (GNDLA.TBARR4)
- LIFTE TRANSITION (LIFTE.TBARR4)
- NVVER TRANSITION (NVVER.TBARR4)
- OLSNN TRANSITION (OLSNN.TBARR4)
- SHNPS TRANSITION (SHNPS.TBARR4)
- WUNZE TRANSITION (WUNZE.TBARR4)
- ZORKL TRANSITION (ZORKL.TBARR4)

(CONTINUED ON FOLLOWING PAGE)

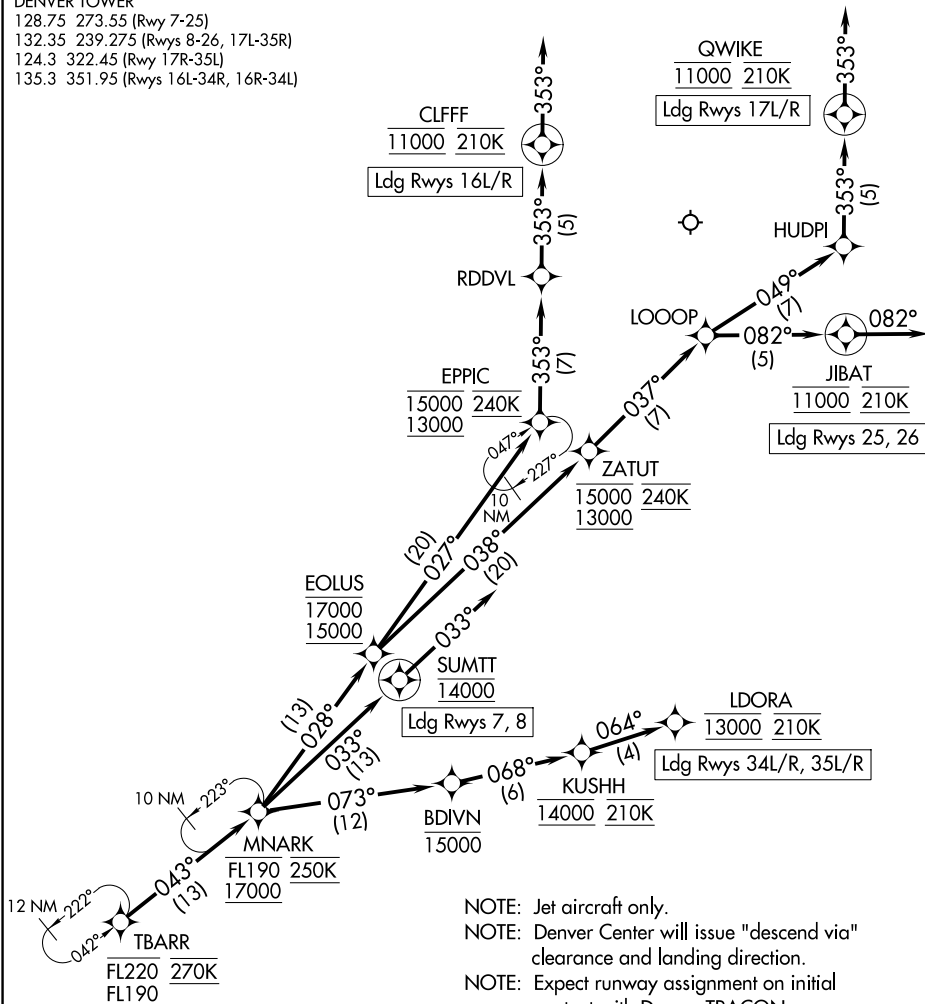
SW-1, 14 MAY 2026 to 11 JUN 2026

SW-1, 14 MAY 2026 to 11 JUN 2026

TBARR FOUR ARRIVAL (RNAV) Arrival Routes

DENVER APP CON
 120.35 379.3
 D-ATIS ARR
 125.6 379.9
 DENVER TOWER
 128.75 273.55 (Rwy 7-25)
 132.35 239.275 (Rwys 8-26, 17L-35R)
 124.3 322.45 (Rwy 17R-35L)
 135.3 351.95 (Rwys 16L-34R, 16R-34L)

RNAV 1 - DME/DME/IRU or GPS.
 RADAR required.



- NOTE: Jet aircraft only.
- NOTE: Denver Center will issue "descend via" clearance and landing direction.
- NOTE: Expect runway assignment on initial contact with Denver TRACON.
- NOTE: SHNPS, BBRRO, NVVER, OLSNN, ZORKL, and LIFTE Transitions, ATC assigned only.
- NOTE: Landing north select Rwy 35L Transition.
- NOTE: Landing south select Rwy 16R Transition.
- NOTE: Landing east select Rwy 7 Transition.
- NOTE: Landing west select Rwy 26 Transition.

(CONTINUED ON FOLLOWING PAGE)

NOTE: Chart not to scale.

TBARR FOUR ARRIVAL (RNAV) Arrival Routes

SW-1, 14 MAY 2026 to 11 JUN 2026

SW-1, 14 MAY 2026 to 11 JUN 2026

ARRIVAL ROUTE DESCRIPTION

From TBARR on track 043° to cross MNARK between 17000 and FL190 and at 250K.

LANDING RUNWAYS 7, 8: From MNARK on track 033° to cross SUMTT at 14000, then on track 033°. Expect RADAR vectors to final approach course.

LANDING RUNWAYS 16L/R: From MNARK on track 028° to cross EOLUS between 15000 and 17000, then on track 027° to cross EPPIC between 13000 and 15000 and at 240K, then on track 353° to RDDVL, then on track 353° to cross CLFFF at 11000 and at 210K, then on track 353°. Expect RADAR vectors to final approach course.

LANDING RUNWAYS 17L/R: From MNARK on track 028° to cross EOLUS between 15000 and 17000, then on track 038° to cross ZATUT between 13000 and 15000 and at 240K, then on track 037° to LOOOP, then on track 049° to HUDPI, then on track 353° to cross QWIKI at 11000 and at 210K, then on track 353°. Expect RADAR vectors to final approach course.

LANDING RUNWAYS 25, 26: From MNARK on track 028° to cross EOLUS between 15000 and 17000, then on track 038° to cross ZATUT between 13000 and 15000 and at 240K, then on track 037° to LOOOP, then on track 082° to cross JIBAT at 11000 and at 210K, then on track 082°. Expect RADAR vectors to final approach course.

LANDING RUNWAYS 34L/R, 35L/R: From MNARK on track 073° to cross BDIVN at or below 15000, then on track 068° to cross KUSHH at 14000 and at 210K, then on track 064° to cross LDORA at 13000 and at 210K. Expect ILS or LOC RWY 34L, RWY 34R, RWY 35L, RWY 35R approach.

LOST COMMUNICATIONS:

In the event of lost communications prior to runway transition assignment, when DEN is landing south, execute the ILS RWY 16R, when DEN is landing north, execute the ILS RWY 35L.

SW-1, 14 MAY 2026 to 11 JUN 2026

SW-1, 14 MAY 2026 to 11 JUN 2026