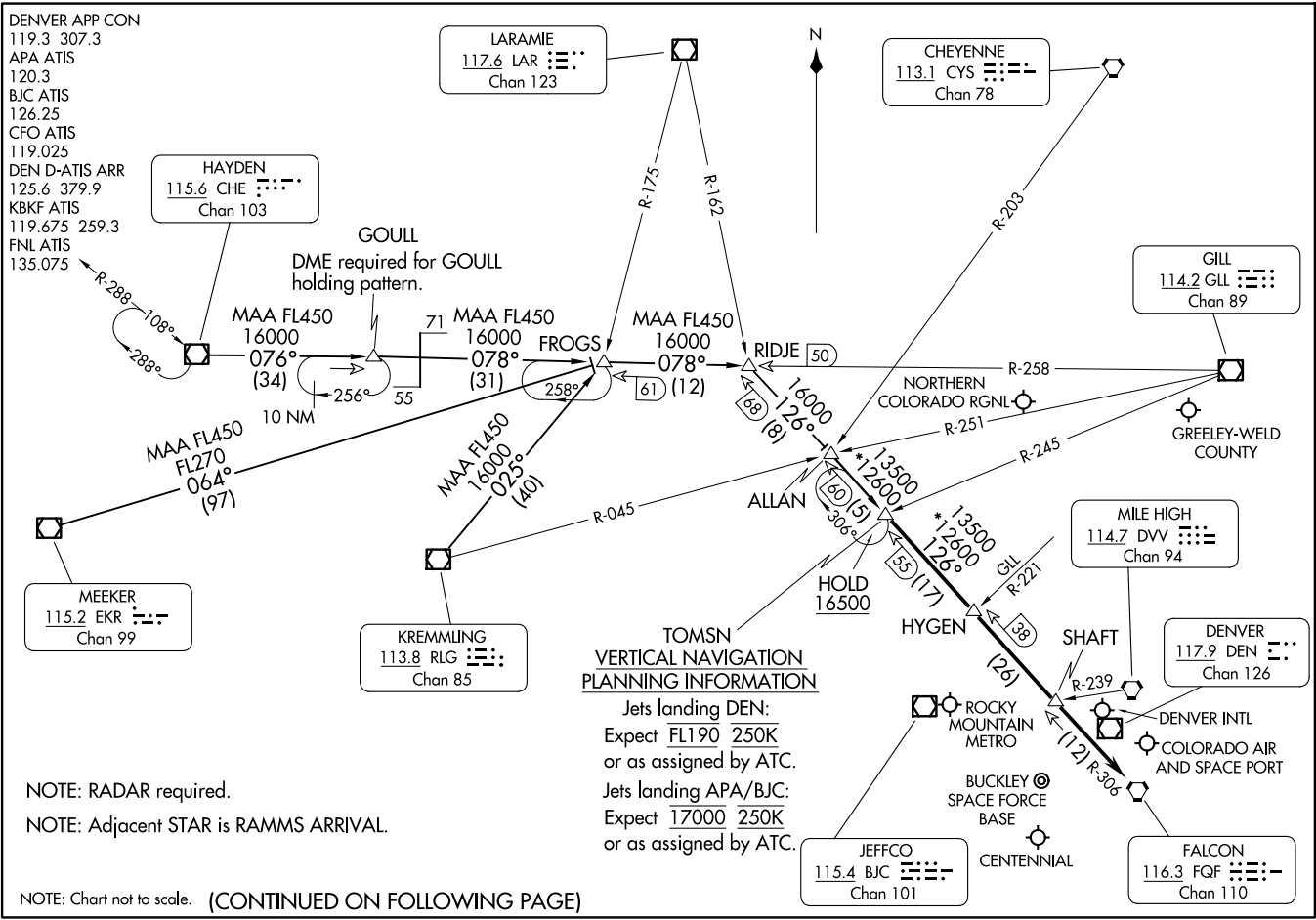


TOMSN NINE ARRIVAL
(TOMSN, TOMSN9) 16MAY24

(TOMSN, TOMSN9) 24137
TOMSN NINE ARRIVAL



AL-9077 (FAA)

DENVER, COLORADO

**TOMSN
VERTICAL NAVIGATION
PLANNING INFORMATION**

Jets landing DEN:
Expect FL190 250K
or as assigned by ATC.
Jets landing APA/BJC:
Expect 17000 250K
or as assigned by ATC.

NOTE: RADAR required.
NOTE: Adjacent STAR is RAMMS ARRIVAL.

NOTE: Chart not to scale. (CONTINUED ON FOLLOWING PAGE)

DENVER, COLORADO

ARRIVAL ROUTE DESCRIPTION

HAYDEN TRANSITION (CHE.TOMSN9): From over CHE VOR/DME on CHE R-076 and GLL R-258 to RIDJE, then on FQF R-306 to TOMSN. Thence. . . .

KREMLING TRANSITION (RLG.TOMSN9): From over RLG VOR/DME on RLG R-025 and GLL R-258 to RIDJE, then on FQF R-306 to TOMSN. Thence. . . .

MEEKER TRANSITION (EKR.TOMSN9): From over EKR VOR/DME on EKR R-064 and GLL R-258 to RIDJE, then on FQF R-306 to TOMSN. Thence. . . .

. . . .from over TOMSN on FQF R-306 to FQF VORTAC. Expect RADAR vectors to the final approach course at or before FQF VORTAC.

SW-1, 14 MAY 2026 to 11 JUN 2026

SW-1, 14 MAY 2026 to 11 JUN 2026