

RNAV 1 - DME/DME/IRU or GPS.  
 TAKEOFF Rwy 8 RADAR required.  
 TAKEOFF Rws 16L/R, 17L/R, 25, 34L/R, 35L/R  
 RADAR required for non-GPS equipped aircraft.

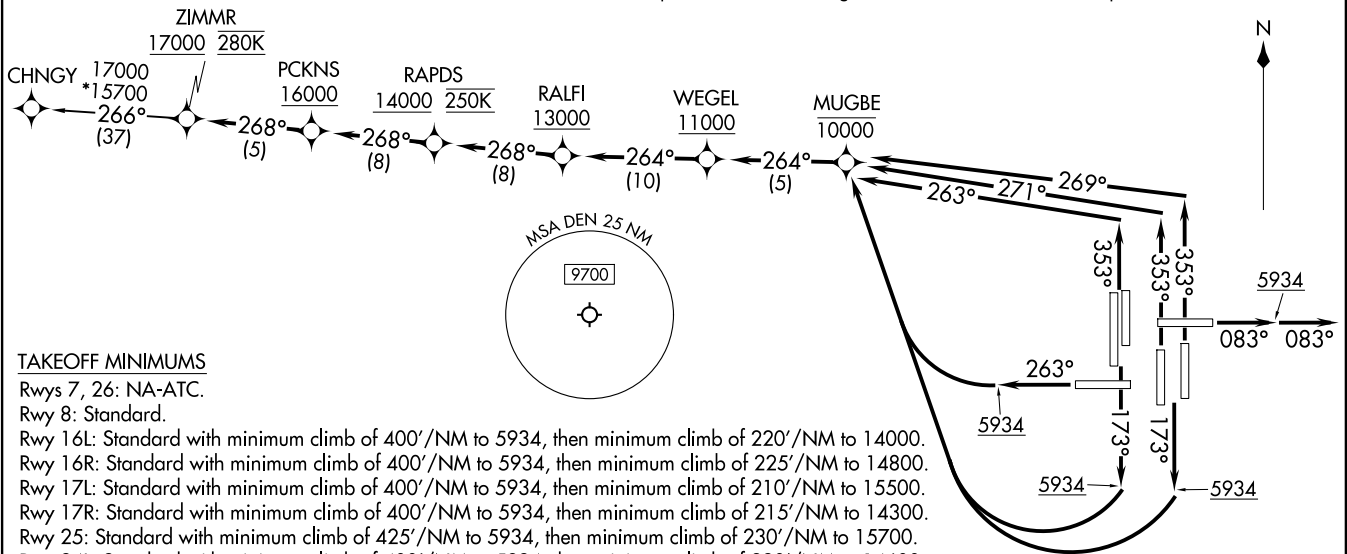
**TOP ALTITUDE:  
 FL230**

DENVER DEP CON  
 126.1 360.75  
 D-ATIS DEP  
 134.025  
 CLNC DEL  
 118.75  
 CPDLC

NOTE: Turbojets only.  
 NOTE: Accelerate to 250K upon reaching 10000. If slower speed is  
 required to meet crossing restrictions, advise CLNC DEL prior to taxi.

ZIMMR FOUR DEPARTURE (RNAV)  
 (ZIMMR4.ZIMMR) 19NAR26

(ZIMMR4.ZIMMR) 26078  
 ZIMMR FOUR DEPARTURE (RNAV)



TAKEOFF MINIMUMS

- Rws 7, 26: NA-ATC.
- Rwy 8: Standard.
- Rwy 16L: Standard with minimum climb of 400'/NM to 5934, then minimum climb of 220'/NM to 14000.
- Rwy 16R: Standard with minimum climb of 400'/NM to 5934, then minimum climb of 225'/NM to 14800.
- Rwy 17L: Standard with minimum climb of 400'/NM to 5934, then minimum climb of 210'/NM to 15500.
- Rwy 17R: Standard with minimum climb of 400'/NM to 5934, then minimum climb of 215'/NM to 14300.
- Rwy 25: Standard with minimum climb of 425'/NM to 5934, then minimum climb of 230'/NM to 15700.
- Rwy 34L: Standard with minimum climb of 400'/NM to 5934, then minimum climb of 230'/NM to 14600.
- Rwy 34R: Standard with minimum climb of 400'/NM to 5934, then minimum climb of 220'/NM to 15700.
- Rwy 35L: Standard with minimum climb of 400'/NM to 5934, then minimum climb of 215'/NM to 14000.
- Rwy 35R: Standard with minimum climb of 400'/NM to 5934, then minimum climb of 210'/NM to 14500.

(CONTINUED ON FOLLOWING PAGE)

NOTE: Chart not to scale.

DENVER, COLORADO  
 DENVER INTL (DEN)

DENVER INTL (DEN)  
 DENVER, COLORADO



DEPARTURE ROUTE DESCRIPTION  
SEE ADDITIONAL REQUIREMENTS ON AAUP

TAKEOFF RUNWAY 8: Climb on heading 083° to 5934, then on heading 083° or as assigned by ATC, for vectors to RALFI at or above 13000, thence. . . .

TAKEOFF RUNWAYS 16L/R, 17L/R: Climb on heading 173° to 5934, then right turn direct to cross MUGBE at or below 10000, then on track 264° to cross WEGEL at or above 11000, then on track 264° to cross RALFI at or above 13000, thence. . . .

TAKEOFF RUNWAY 25: Climb on heading 263° to 5934, then right turn direct to cross MUGBE at or below 10000, then on track 264° to cross WEGEL at or above 11000, then on track 264° to cross RALFI at or above 13000, thence. . . .

TAKEOFF RUNWAYS 34L/R: Climb on heading 353° to intercept course 263° to cross MUGBE at or below 10000, then on track 264° to cross WEGEL at or above 11000, then on track 264° to cross RALFI at or above 13000, thence. . . .

TAKEOFF RUNWAY 35L: Climb on heading 353° to intercept course 271° to cross MUGBE at or below 10000, then on track 264° to cross WEGEL at or above 11000, then on track 264° to cross RALFI at or above 13000, thence. . . .

TAKEOFF RUNWAY 35R: Climb on heading 353° to intercept course 269° to cross MUGBE at or below 10000, then on track 264° to cross WEGEL at or above 11000, then on track 264° to cross RALFI at or above 13000, thence. . . .

. . . .on track 268° to cross RAPDS at or above 14000 and at 250K, then on track 268° to cross PCKNS at or above 16000, then on track 268° to cross ZIMMR at or above 17000 and at 280K. Then on transition. Maintain FL230. Expect higher filed altitude 10 minutes after departure.

CHNGY TRANSITION (ZIMMR4.CHNGY)

SW-1, 14 MAY 2026 to 11 JUN 2026

SW-1, 14 MAY 2026 to 11 JUN 2026