

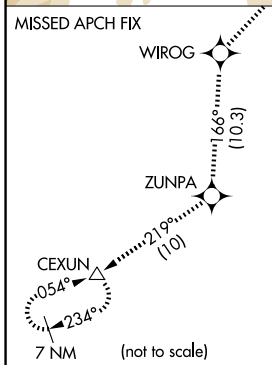
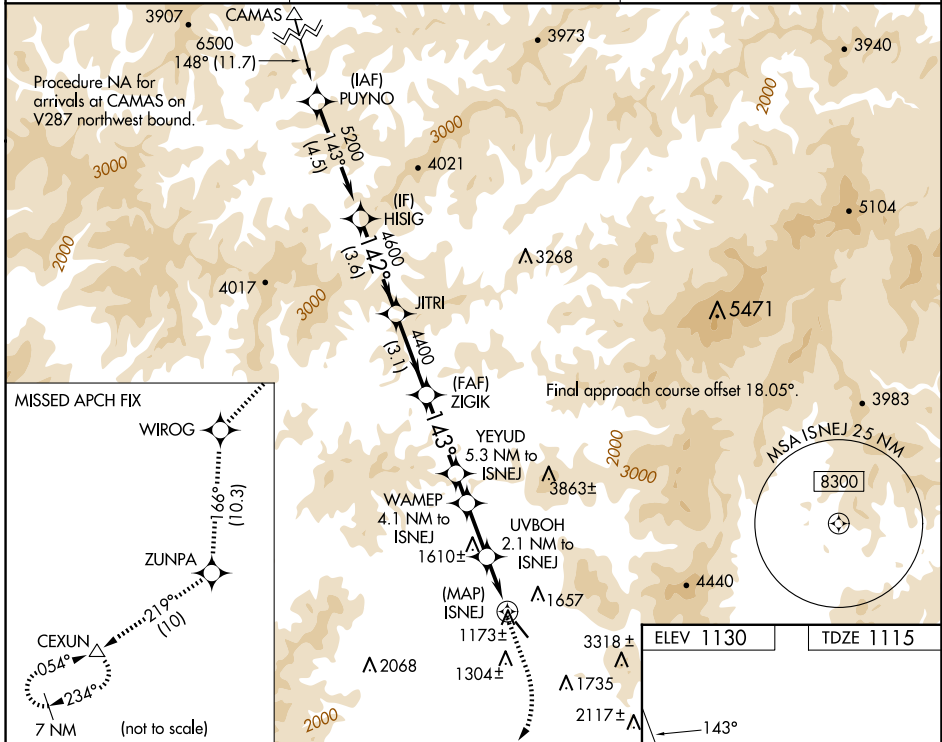
WAAS CH <b>56242</b> <b>W13A</b>	APP CRS <b>143°</b>	Rwy Ldg TDZE Apt Elev	<b>4001</b> <b>1115</b> <b>1130</b>
--	------------------------	-----------------------------	---

# RNAV (GPS) RWY 13

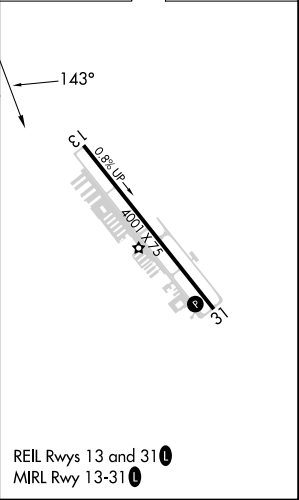
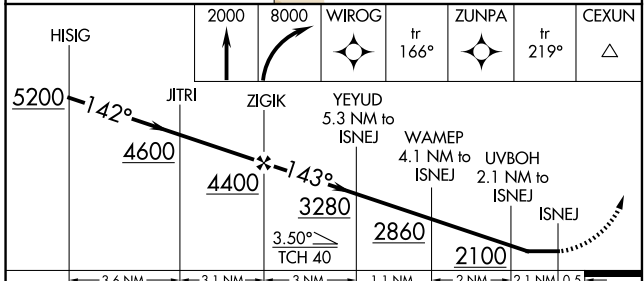
GRANTS PASS (3S8)

RNP APCH-GPS.	<p><b>▼</b> Circling NA northeast of Rwy 13-31. Rwy 13 helicopter visibility reduction below 1 SM NA. Straight-in Rwy 13 NA at night, Circling Rwy 13 NA at night.</p>	<p><b>▲</b> MISSED APPROACH: Climb to 2000 then climbing right turn to 8000 direct WIROG and track 166° to ZUNPA and track 219° to CEXUN and hold.</p>
---------------	--	--

AWOS-3PT <b>120.0</b>	CASCADE APP CON ★ <b>124.3 379.9</b>	UNICOM <b>122.8 (CTAF) 0</b>
--------------------------	---	---------------------------------



ELEV 1130	TDZE 1115
-----------	-----------



CATEGORY	A	B	C	D
LP MDA	1720-1	605 (600-1)	1720-1¾	605 (600-1¾)
<b>C</b> CIRCLING	1840-1 710 (800-1)	2080-1¼ 950 (1000-1¼)	2220-3 1090 (1100-3)	2340-3 1210 (1300-3)

REIL Rwy 13 and 31 **0**  
MIRL Rwy 13-31 **0**

NW-1, 14 MAY 2026 to 11 JUN 2026

NW-1, 14 MAY 2026 to 11 JUN 2026