

APP CRS	Rwy Ldg	<b>3624</b>
<b>095°</b>	TDZE	<b>2922</b>
	Apt Elev	<b>2933</b>

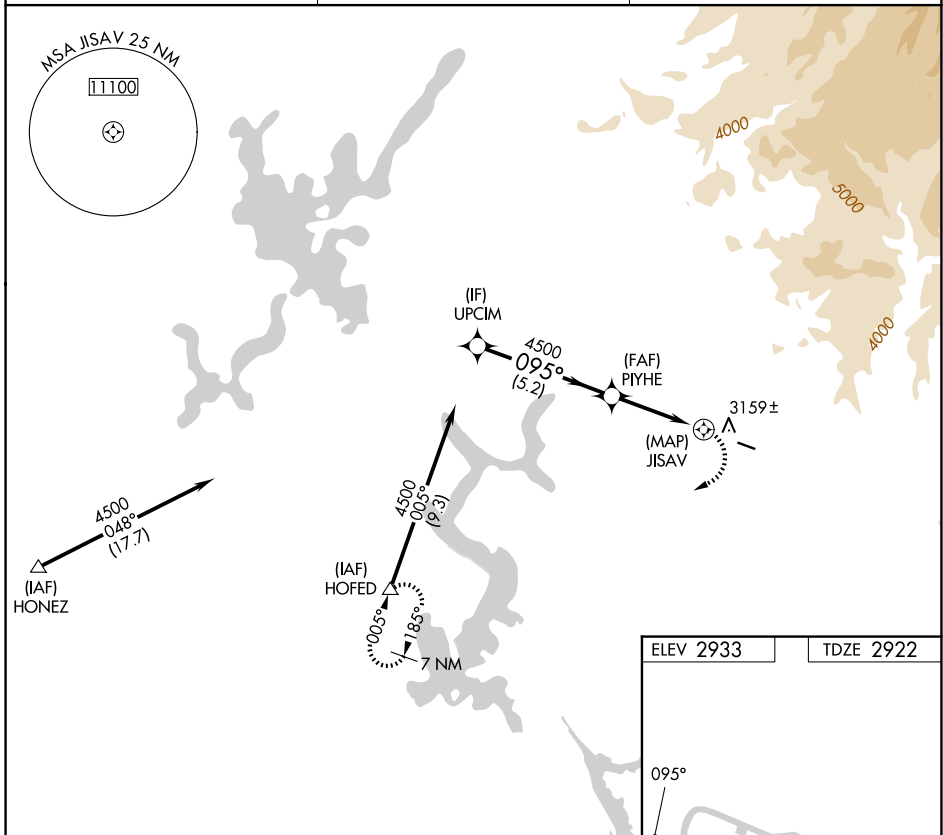
# RNAV (GPS) RWY 9

GROVELAND/YOSEMITE (E45)

RNP APCH-GPS.  
 Procedure NA at night. Rwy 9 helicopter visibility reduction below 1 SM NA. Use Columbia altimeter setting.

MISSED APPROACH: Climbing right turn to 7000 direct HOFED and hold, continue climb-in-hold to 7000.

O22 AWOS-3 <b>124.65</b>	OAKLAND CENTER <b>121.25 327.0</b>	CTAF <b>122.90</b>
-----------------------------	---------------------------------------	-----------------------



SW-2, 14 MAY 2026 to 11 JUN 2026

SW-2, 14 MAY 2026 to 11 JUN 2026

