

WAAS CH 48818 W15A	APP CRS 147°	Rwy Idg TDZE Apt Elev	4999 1787 1815
--	------------------------	-----------------------------	---

RNAV (GPS) RWY 15

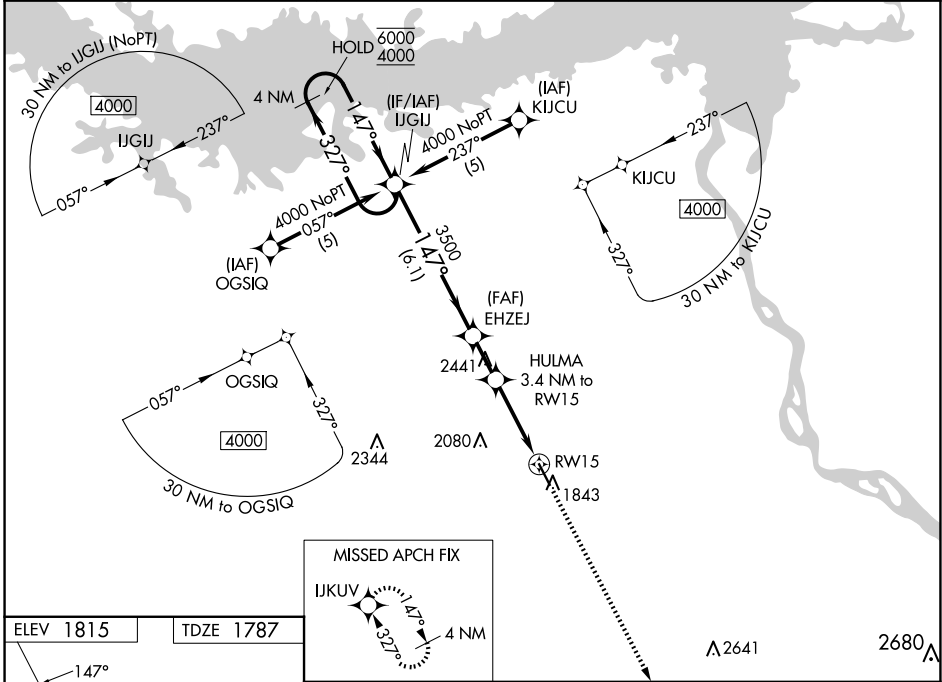
MERCER COUNTY RGNL (HZE)

RNP APCH - GPS.

⚠ For uncompensated Baro-VNAV systems, LNAV/VNAV NA below -18°C or above 54°C.

MISSED APPROACH: Climb to 4000 direct IJKUV and hold.

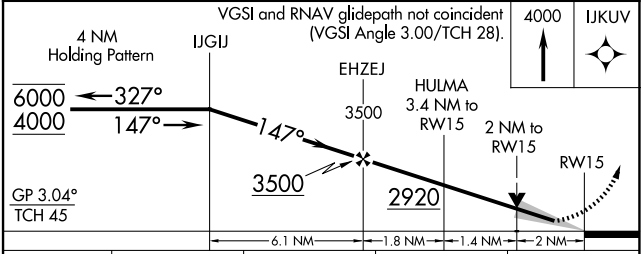
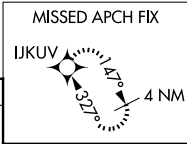
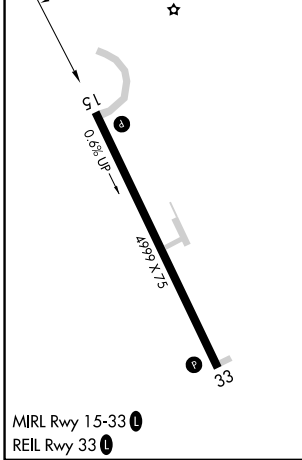
AWOS-3PT 118.675	MINNEAPOLIS CENTER 124.25 236.825	UNICOM 122.8 (CTAF) ①
----------------------------	---	---------------------------------



NC-1, 14 MAY 2026 to 11 JUN 2026

NC-1, 14 MAY 2026 to 11 JUN 2026

ELEV 1815	TDZE 1787
-----------	-----------



CATEGORY	A	B	C	D
LPV DA	2165-1 378 (400-1)			NA
LNAV/VNAV DA	2231-1 $\frac{3}{8}$ 444 (500-1 $\frac{3}{8}$)			NA
LNAV MDA	2460-1	673 (700-1)	2460-1 $\frac{7}{8}$ 673 (700-1 $\frac{7}{8}$)	NA
C CIRCLING	2460-1	645 (700-1)	2480-1 $\frac{7}{8}$ 665 (700-1 $\frac{7}{8}$)	NA