

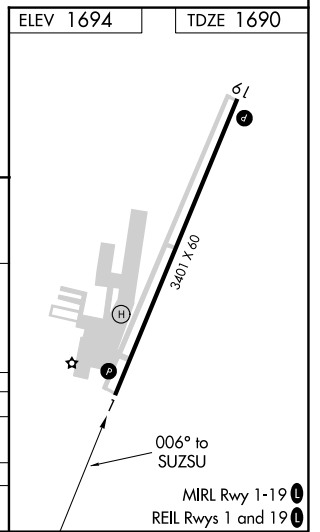
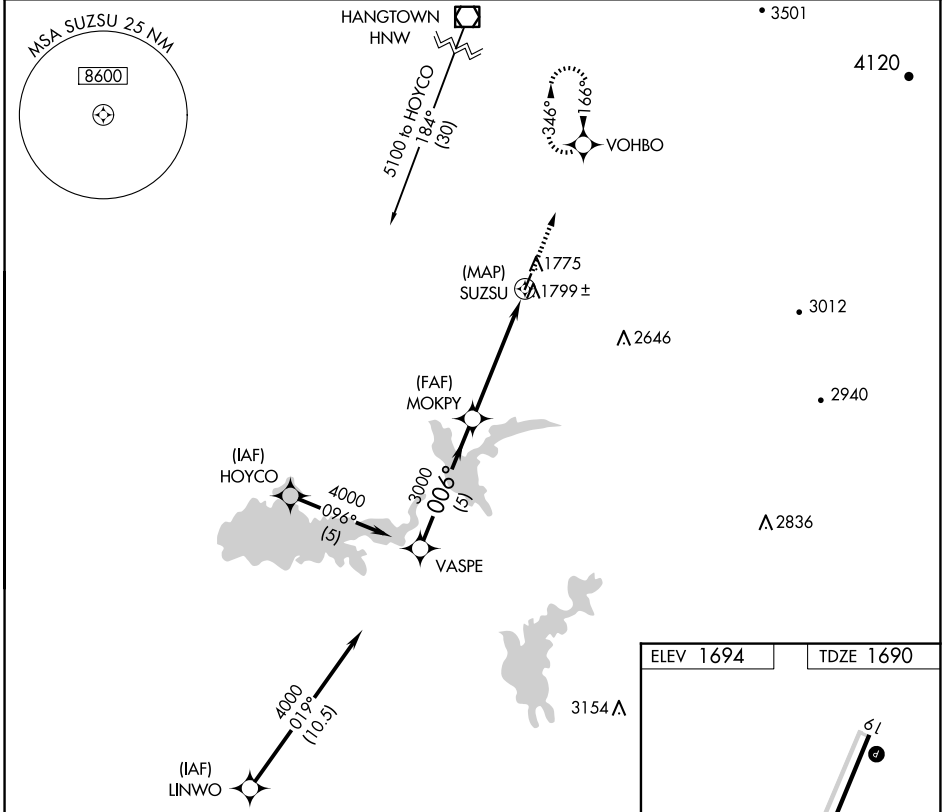
APP CRS	Rwy Idg	<b>3401</b>
<b>006°</b>	TDZE	<b>1690</b>
	Apt Elev	<b>1694</b>

# GPS RWY 1

WESTOVER FLD AMADOR COUNTY (JAQ)

<p><b>▽</b> When local altimeter setting not received, use Sacramento Exec altimeter setting.</p> <p><b>△NA</b></p>	<p>MISSED APPROACH: Climb to 4500 on 006° course to VOHBO and hold.</p>
---	---

<p>AWOS-3</p> <p><b>121.125</b></p>	<p>NORCAL APP CON</p> <p><b>125.1 363.2</b></p>	<p>UNICOM</p> <p><b>123.075 (CTAF) 0</b></p>
-------------------------------------	---	--



<p>Procedure Turn NA</p>	<p>VASPE</p>		<p>MOKPY</p>		<p>SUZSU</p>		<p>4500</p> <p>↑</p> <p>006° crs</p>	<p>VOHBO</p>
	<p>4000</p>		<p>3000</p>		<p>5 NM</p>		<p>5 NM</p>	
CATEGORY	A	B	C	D				
S-1	2060-1	370 (400-1)	NA					
SACRAMENTO EXEC ALTIMETER SETTING MINIMUMS								
S-1	2380-1	690 (700-1)	NA					

SW-2, 14 MAY 2026 to 11 JUN 2026

SW-2, 14 MAY 2026 to 11 JUN 2026