

APP CRS <b>354°</b>	Rwy Idg <b>4006</b>
	TDZE <b>527</b>
	Apt Elev <b>527</b>

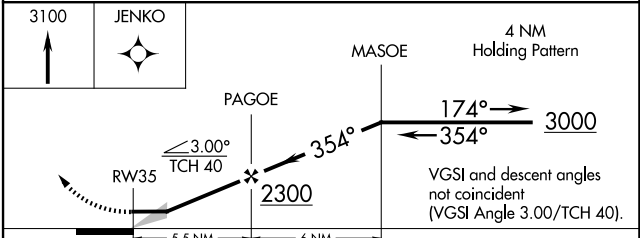
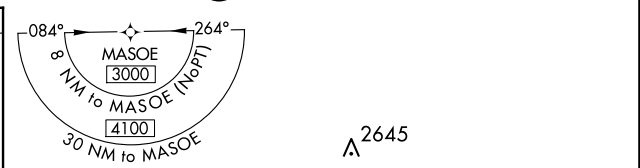
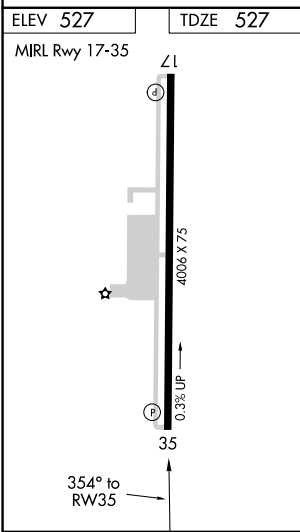
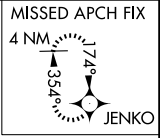
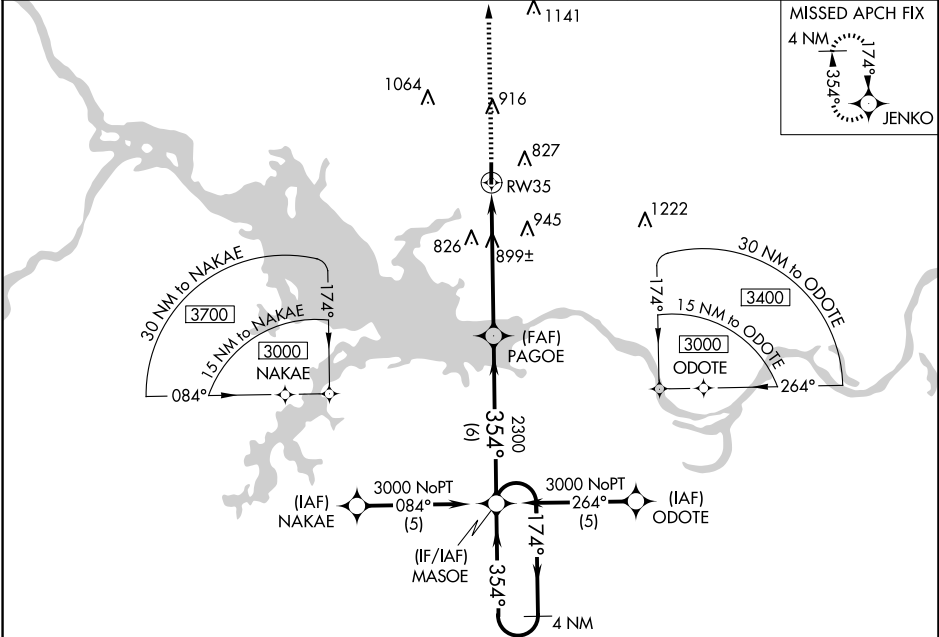
# RNAV (GPS) RWY 35

SALLISAW MUNI (JSV)

**▽** DME/DME RNP-0.3 NA. Night landing: Rwy 17 NA.  
**▲** NA Helicopter visibility reduction below ¾ SM NA.

MISSED APPROACH: Climb to 3100  
 direct JENKO WP and hold.

AWOS-3 <b>118.475</b>	RAZORBACK APP CON * <b>120.9 343.75</b>	UNICOM <b>122.7 (CTAF)</b>
--------------------------	--	-------------------------------



CATEGORY	A	B	C	D
LNAV MDA	1160-1 633 (700-1)		1160-1¾ 633 (700-1¾)	NA
CIRCLING	1160-1 633 (700-1)		1300-2¼ 773 (800-2¼)	NA

SC-1, 14 MAY 2026 to 11 JUN 2026

SC-1, 14 MAY 2026 to 11 JUN 2026