

APP CRS	Rwy Ldg	<b>6101</b>
<b>183°</b>	TDZE	<b>2211</b>
	Apt Elev	<b>2211</b>

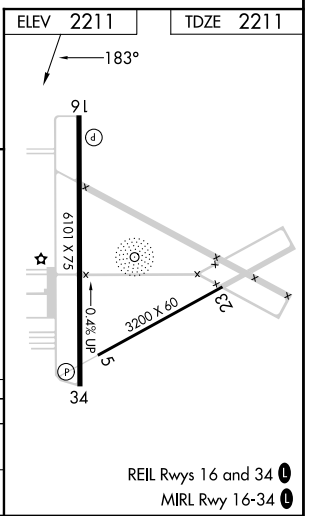
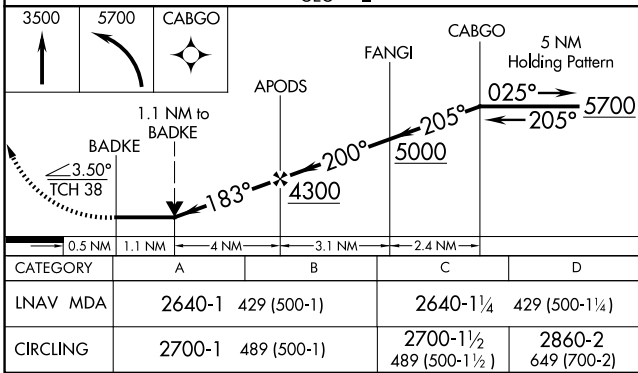
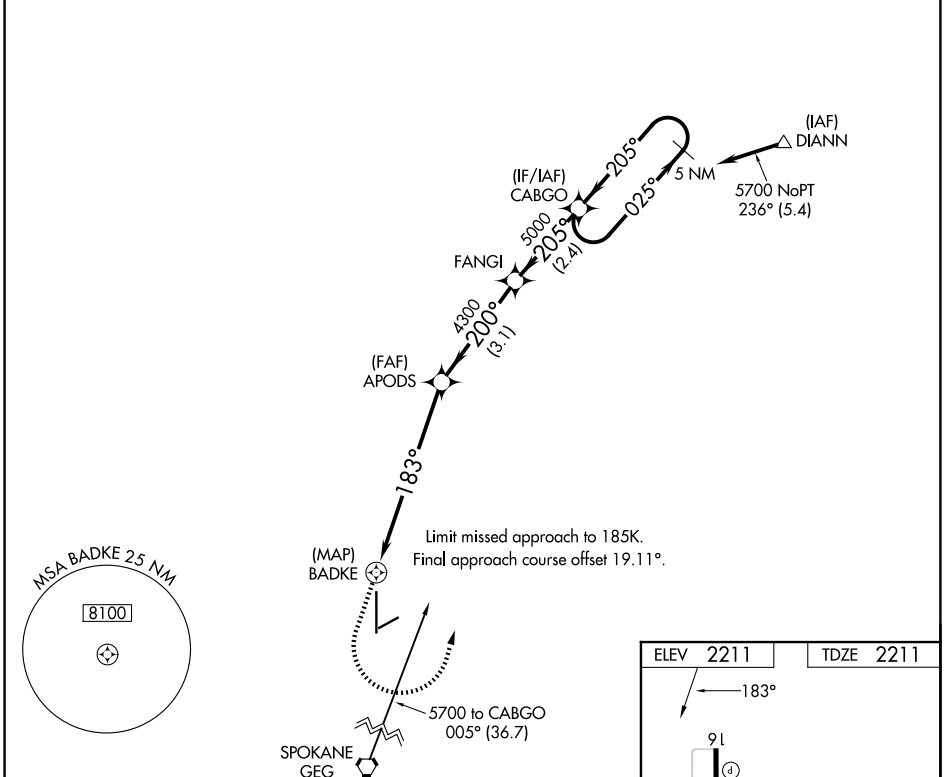
# RNAV (GPS) RWY 16

DEER PARK (DEW)

When local altimeter setting not received, procedure NA.  
 DME/DME RNP-0.3 NA.  
 Helicopter visibility reduction below 3/4 SM NA.  
 Circling NA west of Rwy 16-34.

MISSED APPROACH: Climb to 3500 then climbing left turn to 5700 direct CABGO and hold.

ASOS <b>135.175</b>	SPOKANE APP CON <b>123.75 282.25</b>	UNICOM <b>123.0 (CTAF)</b>
------------------------	---	-------------------------------



NW-1, 14 MAY 2026 to 11 JUN 2026

NW-1, 14 MAY 2026 to 11 JUN 2026