

WAAS CH <b>57938</b> <b>W35A</b>	APP CRS <b>346°</b>	Rwy Ldg TDZE <b>538</b> Apt Elev <b>538</b>
--	------------------------	---

# RNAV (GPS) RWY 35

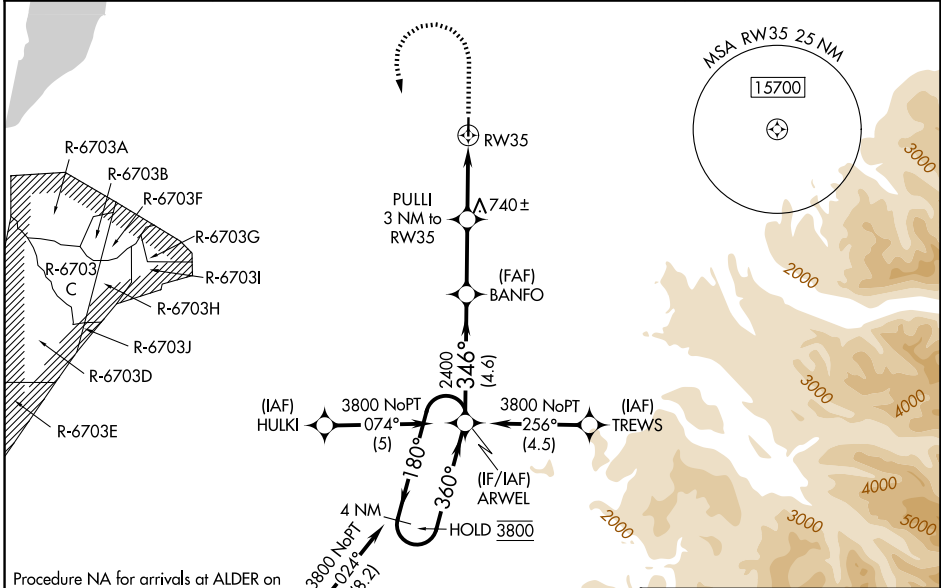
PIERCE COUNTY/THUN FLD (PLU)

RNP APCH - GPS.

⚠ For uncompensated Baro-VNAV systems, LNAV/VNAV NA below -16°C or above 54°C. Baro-VNAV and VDP NA when using TCM altimeter setting. Rwy 35 helicopter visibility reduction below 3/4 SM NA. When local altimeter setting not received, use TCM altimeter setting and increase LPV DA to 960 feet and all visibilities 1/4 SM; increase LNAV/VNAV DA to 1049 feet; increase all MDAs 60 feet.

MISSED APPROACH: Climb to 2000 then climbing left turn to 3800 direct ARWEL and hold.

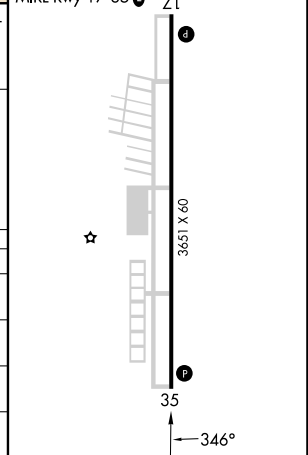
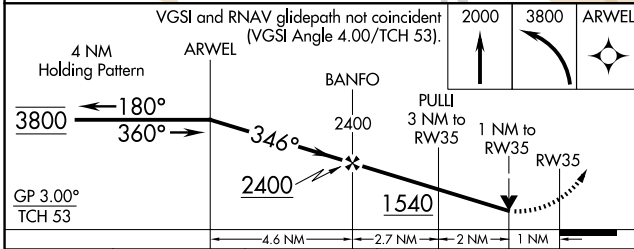
AWOS-3 <b>128.575</b>	SEATTLE APP CON <b>126.5 377.15</b>	CLNC DEL <b>121.85</b>	UNICOM <b>122.7 (CTAF) 0</b>
--------------------------	--	---------------------------	---------------------------------



Procedure NA for arrivals at ALDER on V495 southbound and V204 westbound.

ELEV 538	TDZE 538
----------	----------

REIL Rwy 17 and 35  
MIRL Rwy 17-35



CATEGORY	A	B	C	D
LPV DA	911-1	373 (400-1)		NA
LNAV/VNAV DA	1000-1 3/8	462 (500-1 1/8)		NA
LNAV MDA	1000-1	462 (500-1)		NA
CIRCLING	1080-1	542 (600-1)		NA

NW-1, 14 MAY 2026 to 11 JUN 2026

NW-1, 14 MAY 2026 to 11 JUN 2026