

APP CRS <b>135°</b>	Rwy Ldg <b>3901</b>
	TDZE <b>265</b>
	Apt Elev <b>265</b>

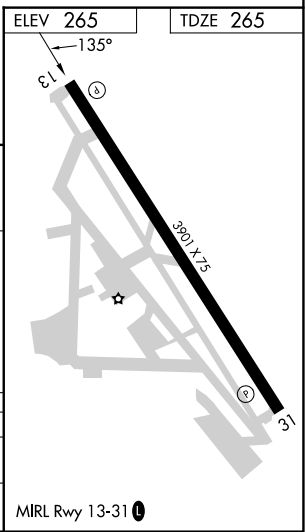
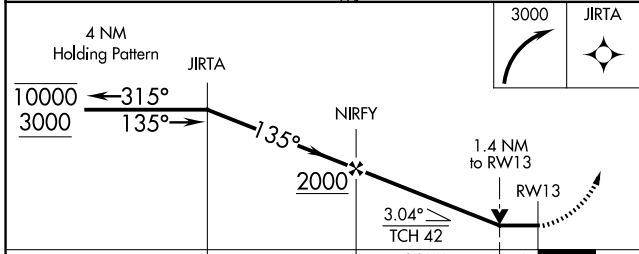
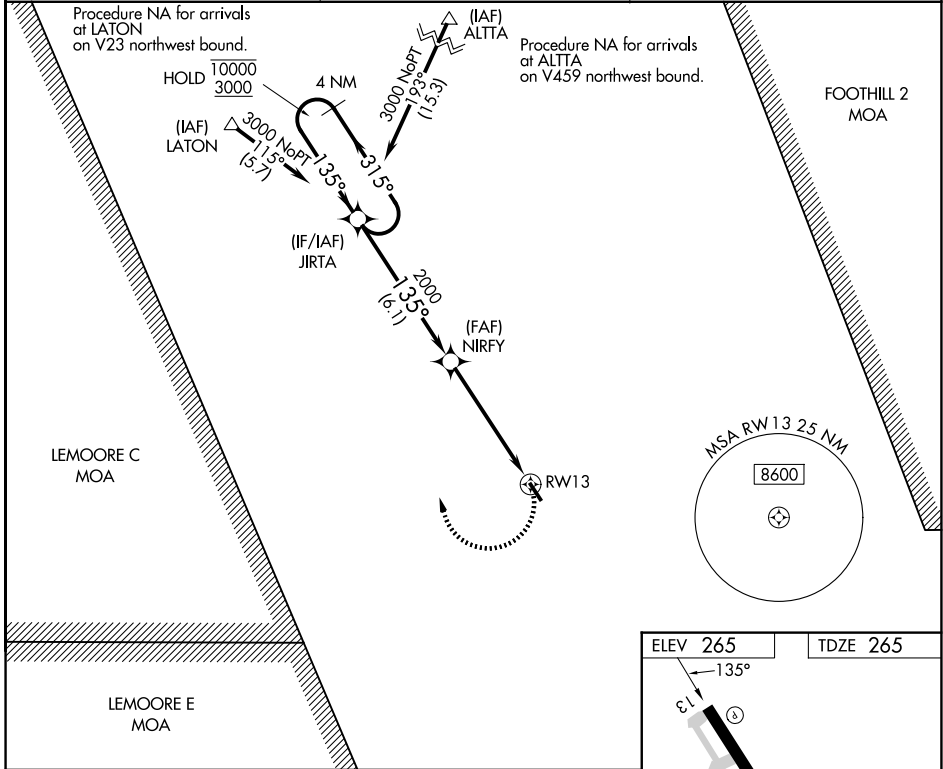
# RNAV (GPS) RWY 13

MEFFORD FLD (TLR)

RNP APCH. MISSED APPROACH: Climbing right turn to 3000 direct JIRTA and hold, Continue climb-in-hold to 3000.

**NA** Circling Rwy 31 NA at night. Rwy 13 helicopter visibility reduction below 3/4 SM NA. When local altimeter setting not received, use Visalia altimeter setting and increase all MDA 40 feet.

AWOS-3PT <b>120.0</b>	FRESNO APP CON <b>118.5 268.7</b>	UNICOM <b>122.7 (CTAF) 0</b>
--------------------------	--------------------------------------	---------------------------------



CATEGORY	A	B	C	D
RNAV MDA	740-1	475 (500-1)	740-1 3/8 475 (500-1 3/8)	NA
CIRCLING	760-1	495 (500-1)	760-1 1/2 495 (500-1 1/2)	NA

SW-2, 14 MAY 2026 to 11 JUN 2026

SW-2, 14 MAY 2026 to 11 JUN 2026