

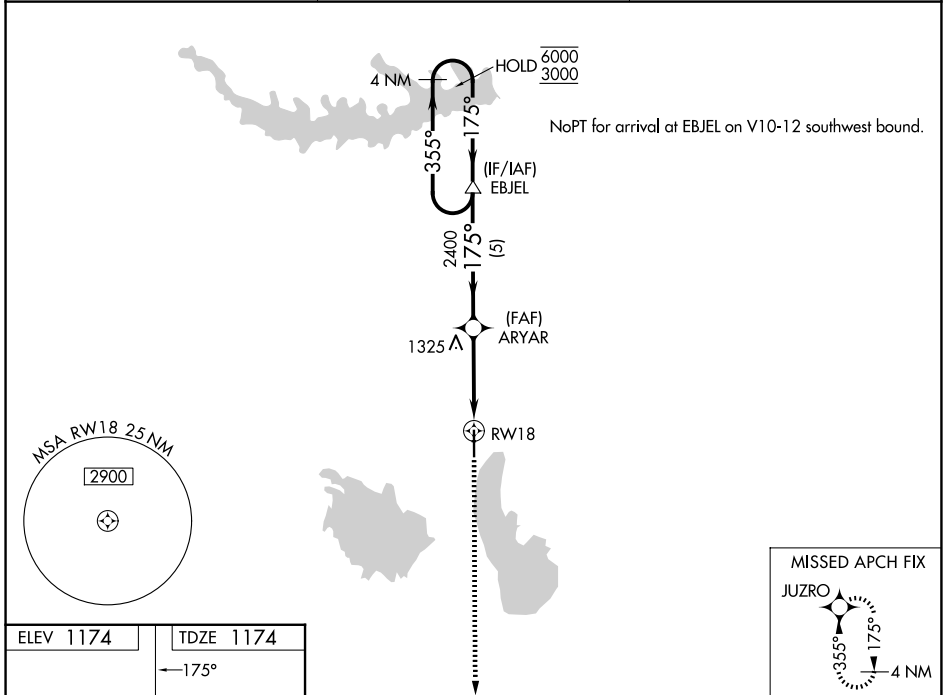
WAAS CH 66021 W18A	APP CRS 175°	Rwy Ldg TDZE Apt Elev	5500 1174 1174
--	------------------------	-----------------------------	---

RNAV (GPS) RWY 18

COFFEY COUNTY (UKL)

RNP APCH-GPS.	MISSED APPROACH: Climb to 3000 direct JUZRO and hold.
<p>For uncompensated Baro-VNAV systems, LNAV/VNAV NA below -17°C or above 54°C.</p>	

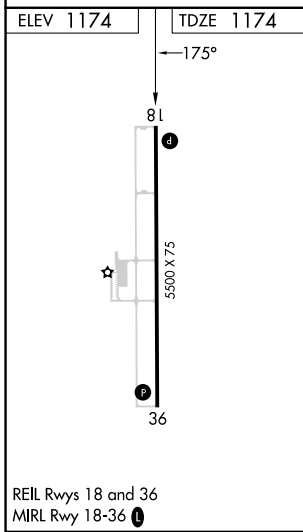
AWOS-3PT 121.125	KANSAS CITY CENTER 127.725 270.25	UNICOM 123.0 (CTAF) 0
----------------------------	---	---------------------------------



NoPT for arrival at EBJEL on V10-12 southwest bound.

NC-2, 14 MAY 2026 to 11 JUN 2026

NC-2, 14 MAY 2026 to 11 JUN 2026



	4 NM Holding Pattern	EBJEL	ARYAR	3000 JUZRO
	6000 ← 355°	3000 → 175°	2400 → 175°	1.2 NM to RWY 18
	GP 3.00°	TCH 40	2400	RWY 18
		5 NM	2.5 NM	1.2 NM
CATEGORY	A	B	C	D
LPV DA	1424-1 250 (300-1)			NA
LNAV/VNAV DA	1424-1 250 (300-1)			NA
LNAV MDA	1580-1	406 (500-1)	1580-1 1/8 406 (500-1 1/8)	NA
CIRCLING	1580-1 406 (500-1)	1640-1 466 (500-1)	1920-2 1/4 746 (800-2 1/4)	NA