

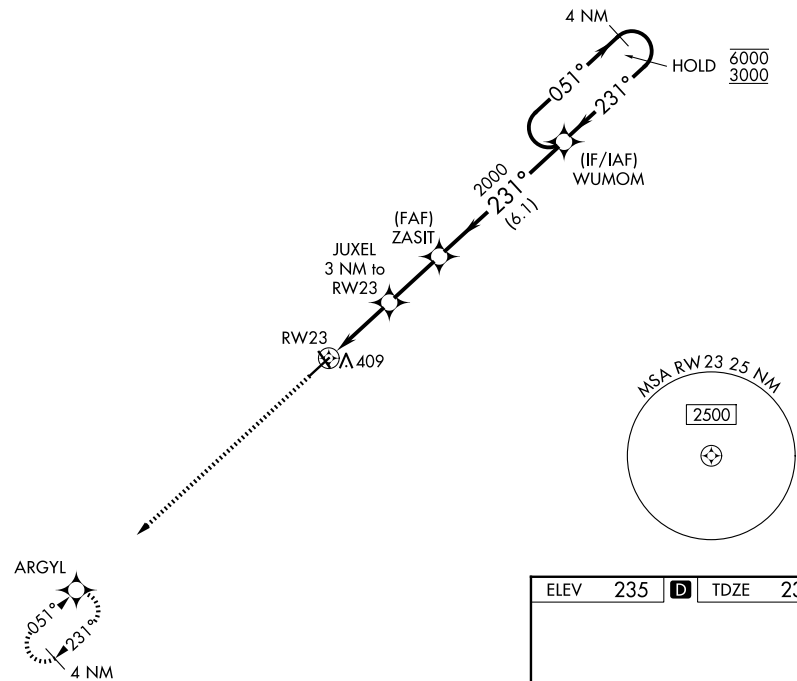
WAAS CH 81833 W23A	APP CRS 231°	Rwy Ldg 5502 TDZE 235 Apt Elev 235
--	------------------------	---

RNAV (GPS) RWY 23

COOK COUNTY (15J)

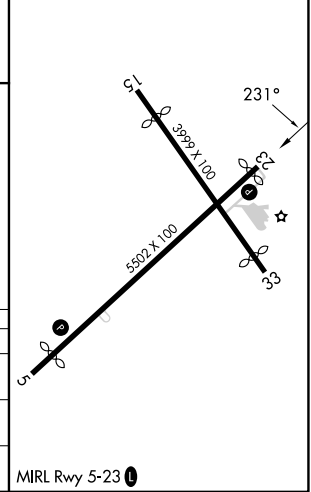
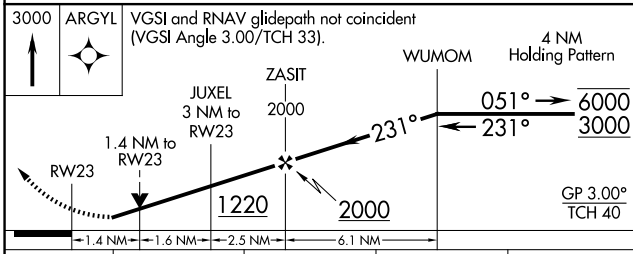
RNP APCH - GPS.		MISSED APPROACH: Climb to 3000 direct ARGYL and hold, continue climb-in-hold to 3000.
<p>▽ Rwy 23 helicopter visibility reduction below ¼ SM NA. ▲ For uncompensated Baro-VNAV systems, LNAV/VNAV NA below -15°C or above 54°C.</p>	AWOS-3PT 118.025	VALDOSTA APP CON★ 126.6 285.6
		UNICOM 122.8 (CTAF) 0

SE-4, 14 MAY 2026 to 11 JUN 2026



SE-4, 14 MAY 2026 to 11 JUN 2026

ELEV	235	D	TDZE	235
------	-----	----------	------	-----



CATEGORY	A	B	C	D
LPV DA	595-1		360 (400-1)	
LNAV/VNAV DA	694-1 ³ / ₈		459 (500-1 ³ / ₈)	
LNAV MDA	700-1	465 (500-1)	700-1 ³ / ₈	465 (500-1 ³ / ₈)