

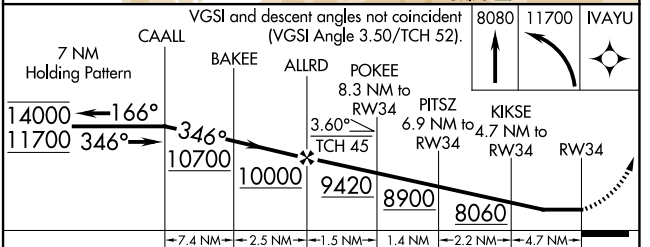
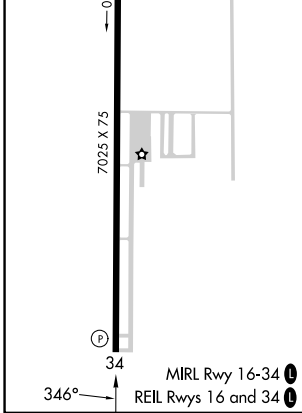
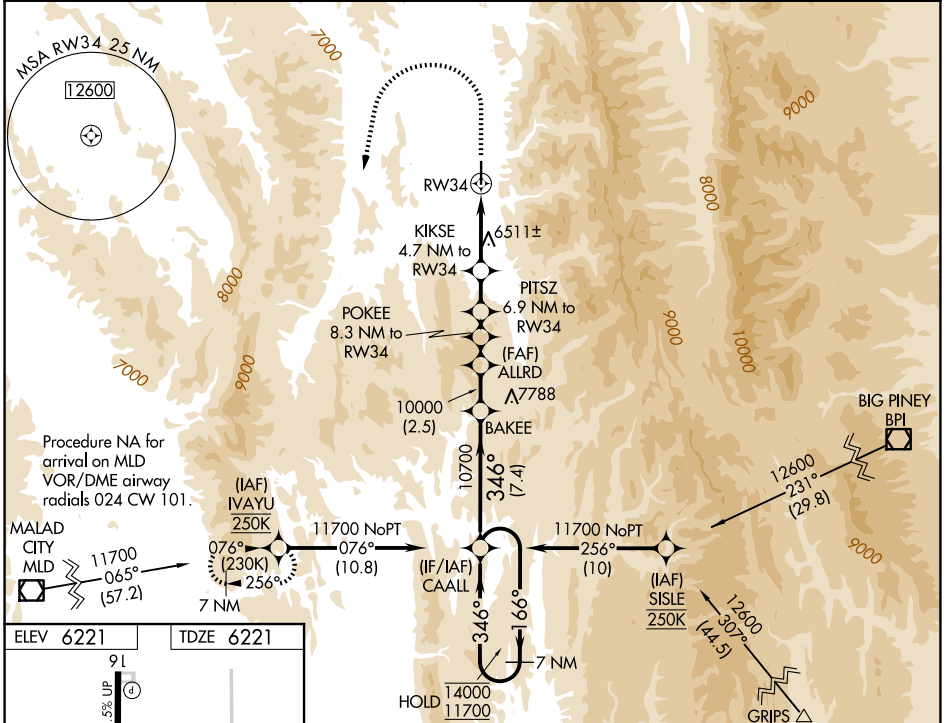
APP CRS <b>346°</b>	Rwy Ldg TDZE Apt Elev	<b>7025</b> <b>6221</b> <b>6221</b>
------------------------	-----------------------------	---

# RNAV (GPS) RWY 34

AFTON LINCOLN COUNTY/GENERAL BOYD L EDDINS FLD (AFO)

<p>RNP APCH - GPS.</p> <p><b>⚠</b> Circling NA east of Rwy 16-34. Procedure NA at night.</p> <p><b>⚠</b> NA Rwy 34 helicopter visibility reduction below 1 SM NA.</p> <p><b>❄</b> -18°C When Afton altimeter setting not received, procedure NA.</p>	<p>MISSED APPROACH: (Do not exceed 200K until IVAYU) Climb to 8080 then climbing left turn to 11700 direct IVAYU and hold.</p> <p>*Missed approach requires minimum climb of 364 feet per NM to 8900.</p>
--	---

AWOS-3PT <b>119.025</b>	SALT LAKE CENTER <b>128.35 239.25</b>	UNICOM <b>122.8 (CTAF) ①</b>
----------------------------	--	---------------------------------



CATEGORY	A	B	C	D
RNAV MDA*	7520-1¼ 1299 (1300-1¼)	7520-1½ 1299 (1300-1½)	7520-3 1299 (1300-3)	NA
RNAV MDA	7800-1¼ 1579 (1600-1¼)	7800-1½ 1579 (1600-1½)	7800-3 1579 (1600-3)	NA
CIRCLING	7800-1¼ 1579 (1600-1¼)	7800-1½ 1579 (1600-1½)	7800-3 1579 (1600-3)	NA

NW-1, 14 MAY 2026 to 11 JUN 2026

NW-1, 14 MAY 2026 to 11 JUN 2026